

City Park Golf Course Cultural Landscape Assessment

Denver, Colorado
August 2017

ATKINS

Prepared for:
City and County of Denver
Department of Public Works
201 West Colfax Avenue
Denver, CO 80202



TABLE OF CONTENTS

A. INTRODUCTION	1
Purpose of the Study.....	1
Organization of the Report	1
B. METHODOLOGY	3
Historical Research.....	3
Documentation and Evaluation of Existing Conditions	3
C. SITE HISTORY	5
Period 1: The Beginning of City Park Golf Course—1896 to 1924.....	7
Period 2: Refinements and Improvements—1925 to 1965.....	16
Period 3: Maturation of City Park Golf Course—1966 to 2001	23
Period 4: Another Era of Change—2001 to Present.....	26
D. EXISTING CONDITION ANALYSIS AND ASSESSMENT	30
Summary of Current Conditions	30
Statement of Significance and Character-Defining Features	31
E. SUMMARY AND CONCLUSIONS	44
REFERENCES	46
APPENDIX	47

LIST OF FIGURES

Figure 1. City Park Golf Course in 1913	4
Figure 2. City Park Golf Course in 2016	4
Figure 3. Overview map of City Park Golf Course.....	6
Figure 4. 1914 Olmstead Brothers Design for City Park	9
Figure 5. Overview of City Park Golf Course showing original and expansion areas.	11
Figure 6. City Park Golf Course Clubhouse as Originally Constructed.....	12
Figure 7. 1922 Bathroom Building on City Park Golf Course	14
Figure 8. The Expanded Clubhouse, Circa 1950.....	15
Figure 9. 1923 Starter House	15
Figure 10. 1924 Shelter	16
Figure 11. Aerial View of City Park Golf Course and City Park, circa 1923	17
Figure 12. Aerial View of City Park Golf Course and City Park, circa 1925	18
Figure 13. Aerial View of City Park Golf Course, circa 1935	19
Figure 14. Photograph of Proposed Mountain View Golf Course Design, circa 1946.....	20

Figure 15. 1959 Plans for irrigation system showing re-designed greens on eastern side of course.....	21
Figure 16. Detailed View of the Eastern Side of the Course, circa 1935	22
Figure 17. Detailed View of Eastern Side of the Course, circa 1995	23
Figure 18. 1995 City Park Golf Course Master Plan	25
Figure 19. Aerial View of City Park Golf Course, circa 1995	28
Figure 20. Aerial View of City Park Golf Course, circa 2008	28
Figure 21. Aerial View of City Park Golf Course, circa 2014	29
Figure 22. 2001 Clubhouse and Parking Lot Looking Southeast.....	35
Figure 23. 2001 Snack Bar and Toilet Building, with Cart Parking Area	36
Figure 24. Maintenance and Storage Yard	36
Figure 25. View of CPGC Looking Southwest Showing Topography Created by Fill from Pond Construction.....	37
Figure 26. View of CPGC Looking Northwest Showing Extensive Grass and Vegetation	39
Figure 27. View of Sidewalk Along York Street Looking North	40
Figure 28. View of CPGC Looking West Showing Extensive Grass and Vegetation	41
Figure 29. View of CPGC Looking East Showing undulating terrain on west side of course	42
Figure 30. View of 2005 First Tee building	42

LIST OF TABLES

Table 1. Comparison of Original Hole Numbering and Yardage (Source Denver Parks and Recreation).....	13
Table 2. Applicable National Register Criteria and Areas of Significance for CPGC National Register Listing	31
Table 3. NRHP Character-Defining Features	33

ACRONYMS

CCD	City and County of Denver
CCR	Colorado Code of Regulations
CDOT	Colorado Department of Transportation
CPGC	City Park Golf Course
CRS	Colorado Revised Statutes
CSRHP	Colorado State Register of Historic Places
NRHP	National Register of Historic Places
PGA	Professional Golf Association

COMMON GOLF TERMS

Bunker: A concave area containing sand or the like, considered a hazard.

Cup: The four-inch-deep, 4.5-inch diameter hole on the green.

Drive: The first shot taken at the teeing ground at each hole — even if you don't hit it with a driver.

Driver: The longest club (and the one with the biggest head), used for tee shots as it's designed to hit the ball the farthest.

Fairway: The center, short-mown portion of a golf hole in between the teeing ground and the green.

First tee: Where a round of golf play begins.

Greens: The most closely mown and smooth area on the course, which is specifically prepared for putting and on which the hole is placed

Green Fee: The cost to play a round of golf. (This usually includes the cost of the golf cart rental and practice balls).

Hole:

1. 4¼ inch diameter hole in the ground into which the ball is to be played
2. the entire length of the playing area and immediate vicinity from the teeing ground to the putting green (all inclusive)

Rough: The long grass bordering the fairway.

Sand bunker: A bunker filled with sand.

Tee box or Tee Green: The area on a golf hole where the ball is first struck.

The Turn: The halfway point in a round of golf.

Source: Golf for Cause, Internet page, accessed August 18, 2017.

This page intentionally left blank.

A. INTRODUCTION

Purpose of the Study

City Park Golf Course (CPGC) is one of Denver's oldest golf courses, and—in the words of Happy Haynes, Executive Director of Denver's Parks and Recreation Program— it is “one of Denver's Crown Jewels.” Opened in 1913 by the City and County of Denver (CCD), the golf course is listed on the National Register of Historic Places (NRHP) and remains a key element in the Denver park system. While its function and some elements, such as its mountain views and course layout, have remained constant since the 1920s, the facility has seen a wide range of changes and modifications over time. From a nine-hole course consisting of sand greens and fairways to the verdant park-like course of today, City Park Golf Course has experienced a steady series of alterations during its 104 years of operation.

Currently, CPGC is being redesigned as part of the Platte to Park Hill Stormwater System Program to integrate additional stormwater detention within the golf course. The Platte to Park Hill Program is a comprehensive approach to protect people and property in North Denver against flooding while improving water quality and enhancing public spaces. The program is focused in the near term on the northern neighborhoods of Elyria, Swansea, Cole, Clayton, Skyland, Whittier, Five Points, and Northwest Park Hill. These areas are at risk of severe flooding during storms. Proposed changes to the golf course include an enlarged stormwater detention area, a new clubhouse facility, and improved course playability.

A portion of the Platte to Park Hill Drainage Project is being constructed with state funds provided by the Colorado Department of Transportation (CDOT). Because the project has the potential to impact properties on or eligible for listing on the NRHP or the Colorado State Register of Historic Places (CSRHP), the project will comply with Colorado Revised Statute (CRS) 24-80.1-104 and Colorado Code of Regulations (CCR) 1504-5, hereinafter referred to as the CSRHP review. Because the proposed changes to the CPGC facility result in an adverse effect to the property, this assessment and summary was prepared to mitigate the adverse effect and to ensure that the design minimizes impacts to significant landscape characteristics and associated features and materials. This report summarizes the physical evolution of the course and describes the features that contribute to the historic significance of the golf course. This summary will help guide future efforts of designers and planners by providing an important tool that can be used to protect and preserve those historic features and characteristics that make City Park Golf Course a unique space.

Organization of the Report

The CPGC Cultural Landscape Assessment follows the guidelines laid out in Section One of the National Park Service publication, *A Guide to Cultural Landscape Reports: Contents, Process, and Techniques*. This document is organized into three sections that describe the process by which this report was prepared.

- Methodology describes the research and data-gathering techniques that were followed to prepare the report.
- Site History describes the physical evolution of CPGC from its inception to the current day. It includes an overview and detailed history of development of the site and a determination of its periods of historical significance. This study does not contain any type of social history, nor does it attempt to develop a historic context for the site.
- Existing Condition Analysis and Assessment is a detailed description and evaluation of the physical qualities of CPGC outlined in the 1986 nomination that placed the site on the NRHP and it evaluates how the evolution of the course has impacted those characteristics. This analysis also is informed by the City and County of Denver's 2001 Master Plan for City Park, entitled *Revitalizing the Legacy of City Park* (currently being updated), and additional historic research performed for this report.

B. METHODOLOGY

Historical Research

The historical research for this report included examining numerous primary and secondary sources, such as *Municipal Facts*, a newsletter published by the City of Denver from 1909 to 1931, as well as records and files maintained by CCD. Many primary sources, such as drawings, plans, and photographs held by the Denver Public Library's Western History collection, also were reviewed. Additional research was conducted at the Stephen H. Hart Library at History Colorado in Denver. Please note that this history only traces the physical development of the site and does not include a broader historic context or social history of the site and the role that it played in Denver's history. Wherever possible, historic photographs, aerial images, and plans are included to help illustrate the evolution of the property from various time periods.

Documentation and Evaluation of Existing Conditions

During the preparation of this report, numerous visits were made to the site to document and record the current conditions of the course. On two of the visits, CPGC operations staff were present to provide access to all parts of the facility and to provide information about maintenance and operations challenges.

One visit occurred in June 2016, and accompanied staff from the CCD Forestry Office, which oversees all trees in parks, roadways, and other public spaces. At that time, forestry staff was in the process of conducting an inventory and condition assessment of existing trees on the site. They also discussed the effects that irrigation with non-potable water, as required by Denver Water, has had on many of the trees scattered around the course. They also discussed the effects that irrigation with reclaimed water, as required by Denver Water, has had on many of the trees scattered around the course. The use of reclaimed water has had adverse effects on some tree species on the property. The results of that tree survey and a map showing individual trees are included in Appendix A.

When the historical research and site documentation was completed, an analysis of the evolution of physical and character-defining features that make up the course was possible. This analysis revealed that, while the general layout of the golf course has remained constant since the 1920s, the nature and feel of the landscape has changed significantly. More information on existing conditions is provided in Section D, Existing Condition Analysis and Assessment.



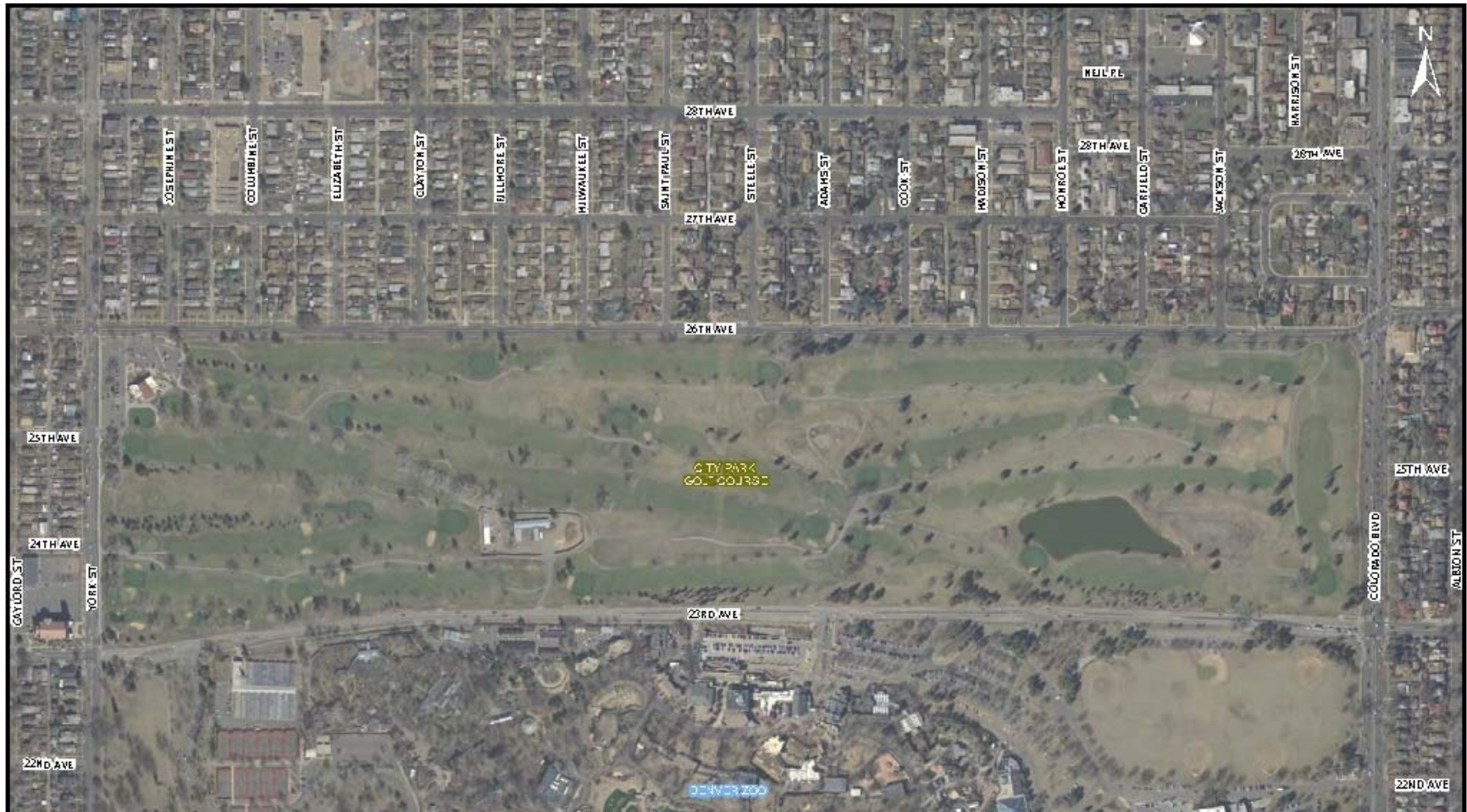
City Park Golf Course looking west in 1913. The spires of Saint Ignatius Loyola Church are visible on western edge of course.
Figure 1. City Park Golf Course in 1913



City Park Golf Course looking west in 2016. The spires of Saint Ignatius Loyola Church are located behind trees (red arrow).
Figure 2. City Park Golf Course in 2016

C. SITE HISTORY

In previous documentation, a specific period of significance for the site was not identified, so this time frame has been identified for the purposes of this study. The development, construction, and evolution of the course can be divided into four phases that help define the site's periods of significance. The golf course's period of historic significance is from 1913 to 1965, and is covered within the first two phases delineated below. The first phase (1896 to 1924) focuses on the period during which the course was proposed, land was acquired, and the course was designed and constructed. By the end of this period, the first limited irrigation system had been installed. The second period (1925 to 1965) represents the course in its present-day layout, but this period still saw many changes, modifications, and improvements. Larger irrigation systems were installed that allowed the course to transition from tees and greens built on sand to turf-covered tees and greens. The third period (1966 to 2001) included further refinements and changes. The first automated irrigation system that watered most of the course was installed and many of the trees found on the course were planted. The final period (2001 to present) began with the demolition and replacement of two original buildings (the clubhouse and snack bar) and included changes to the positions of fairways, tees, and greens. In addition, a large irrigation pond was excavated on the east side of the facility and the dirt removed from this location was used to create hills and rolling terrain on the eastern third of the course. More information on all these changes is presented below. The history is divided into four periods that reflect the different eras of design and change that occurred. See Figure 3 for a current map showing the layout and location of the facility.



City Park, including Denver Zoo, is located south of 23rd Avenue.

Figure 3. Overview map of City Park Golf Course

Period 1: The Beginning of City Park Golf Course—1896 to 1924

Denver's population soared in the late 19th century, increasing from less than 5,000 residents in 1870 to nearly 134,000 by 1900. This growth led to rallying cries from Denver citizens and civic leaders for a parks and recreational system to provide outdoor leisure and athletic outlets throughout the city. Initial planning for today's City Park began as early as 1878, with primary improvements in the park taking shape in the late 19th and early 20th centuries. Robert Speer heavily promoted the development of recreational areas and parks in Denver during his three tenures as mayor from 1904 to 1912; and 1916 to 1918. Due largely to his influence, the first two decades of the 20th century brought many improvements to City Park, including the initial planning and development of City Park Golf Course¹.

Similar to other parks and recreational facilities in Denver, the land on which CPGC still sits on land that was first owned by the state of Colorado. In 1896, the state deeded to the City of Denver a 100-foot-wide strip of land that ran along the southern edge of the state parcel. This land was later used to construct 23rd Avenue². This land lay just to the north of City Park, the large municipal landscape that, by 1884, had become a favorite recreation spot for the City. In 1899, the first proposal to establish a golf course adjacent to City Park was made³.

In 1912, Denver purchased (for \$81,601) an 81-acre parcel used by a dairy farm⁴. This parcel ran from York Street (the western edge of the property) eastward to Colorado Boulevard, and ran from 23rd Avenue (on the south) to a point at approximately 25th Avenue (on the north). On September 6, 1913, CPGC was formally dedicated and became the first municipally owned and operated golf course in the Denver area. The original course consisted of only nine holes, laid out along the north side of 23rd Avenue, which today comprises the southern portion of the existing 136-acre course. No designs have been found that document the course as it was built, nor is it known who designed the course.

In 1914, the City began negotiations with the state to lease more land to expand the course to 18 holes. In that year, Denver formalized an agreement with the State Land Board for a 20-year lease on a 50-acre parcel of state land, lying north and adjacent to the existing nine-hole course that ran from York Street east to Colorado Boulevard. Part of this parcel contained a tree farm, which became the location of the clubhouse that was built in 1918. An article in a 1914 copy of *Municipal Facts* mentions that several buildings were being removed and land was being

¹ 2001 Master Plan CPGC. Denver Civic Center National Historic Landmark Nomination 2013

² City of Denver. City Park Golf Course History (CPGC History).

³ City of Denver. City Park Golf Course History.

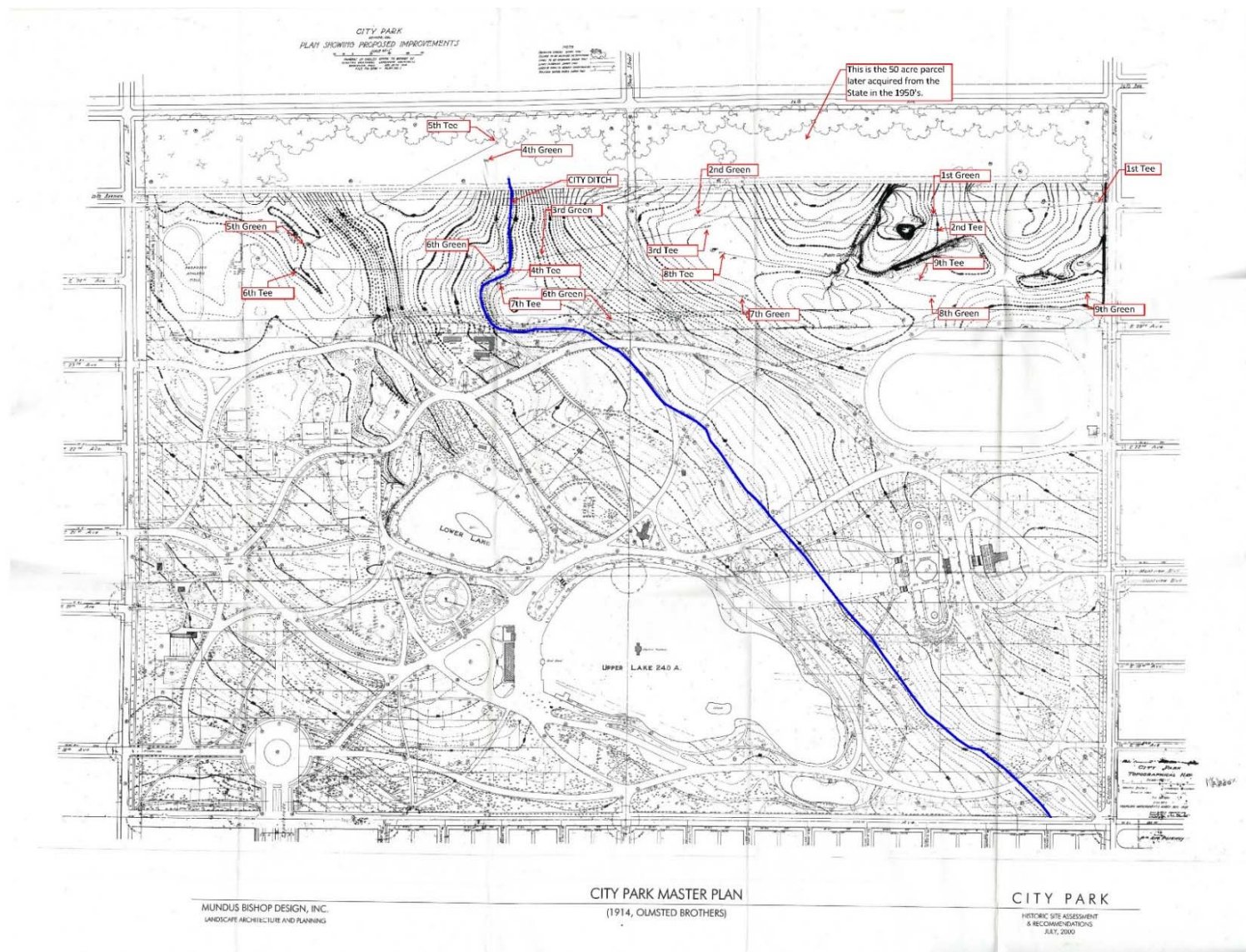
⁴ Ibid

cleared for a nine-hole addition and that the expanded course with 18 holes was expected to open late in 1914.⁵⁶

In 2001, a master plan was developed for City Park. While this document was focused only on the park, it does touch upon some aspects of CPGC history and layout. The document includes a 1914 plan sheet (see Figure 4), drawn up by the well-known landscape design firm of Olmstead Brothers, as part of a proposed redesign for City Park. The firm, founded by the sons of the pioneer landscape architect Frederick Law Olmstead, worked on many prominent projects throughout the United States and Canada. This plan appears to incorporate elements of the existing nine-hole course (which opened in 1913) into a proposed park layout that would have stretched from 17th Avenue to 25th Avenue, and placed features such as an athletic field where today's driving range is located. It would have removed 23rd Avenue, the southern boundary of the golf course. It does not appear that the Olmstead Brothers played any role in the creation or design of City Park Golf Course, and that their design was conceptual in nature, and had no effect on the eventual layout or design of CPGC.

⁵ *The City of Denver, Municipal Facts*, November 28, 1914, page 8.

⁶ *Ibid.*



Source: *Revitalizing the Legacy of City Park*, 2001.

Blue line shows route of City Ditch and red boxes show location of existing tees and greens.

Figure 4. 1914 Olmstead Brothers Design for City Park

While the expanded course opened in 1914, efforts were being made to revise the design. In 1917, *The American City* publicized that City Park Golf Course was being expanded and remodeled. It also stated that, “The recommendations for the rearrangement of the old course have been made by Tom Bendelow, golf course architect...” (see Figure 5). This is the first reference found connecting Tom Bendelow with the design of CPGC. The 18-hole course, opened in 1918, consisted of sand greens and tees made up of pushed-up dirt, with much of the remaining course being left in its natural state of prairie grasses or dirt. Irrigation was not added until several years later.

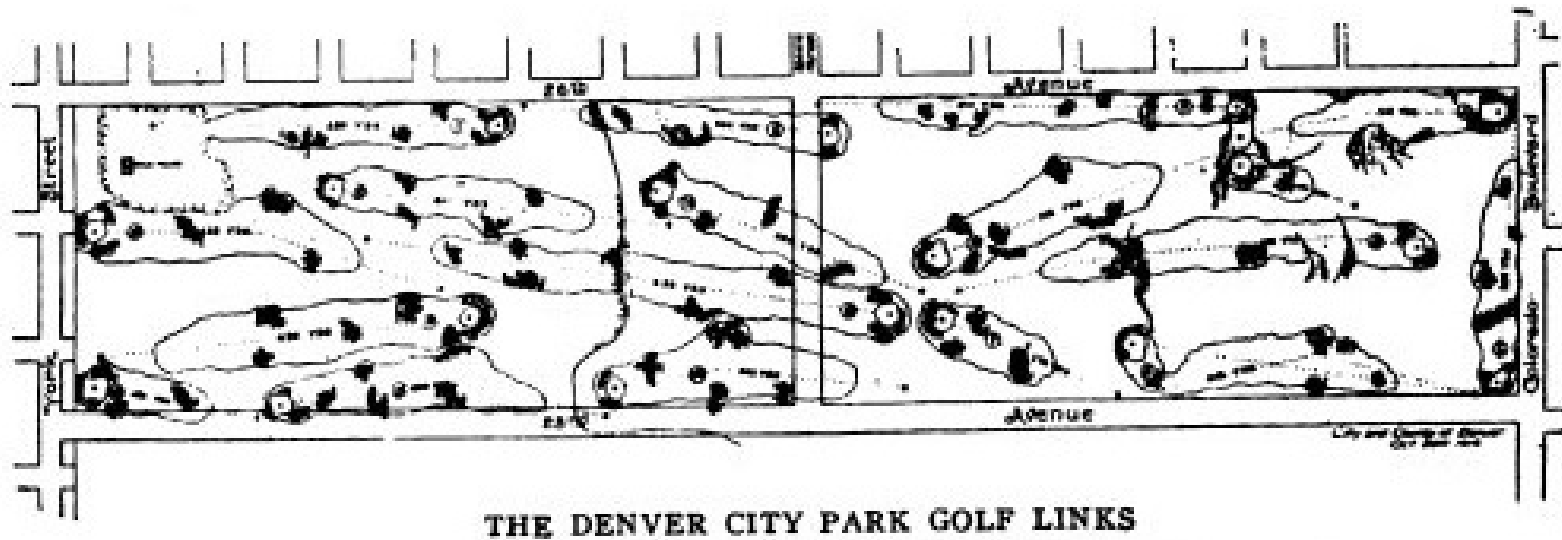
Tom Bendelow was one of the pioneer architects of American golf and is credited with laying out more than 600 courses in his career, many of which no longer exist.⁷ Two of his courses are on the National Register of Historic Places, including CPGC.

During the first part of his career, Bendelow’s designs followed the Scottish link style, which includes existing landforms and few, if any, trees. These designs took a “naturalistic approach” in that he strove to use the natural features of the chosen site to maximum advantage⁸. Much of his work was described as “18 Stakes on a Sunday Afternoon.”⁹ While this was not an uncommon design approach in Bendelow’s day (essentially, the architect would simply drive stakes into the ground to designate tee, fairway, and green locations, usually completing the work in a single day), the term would end up attached to Bendelow throughout his career. The term he liked to use to describe his layouts is “sporty”, meaning one that offered some challenge and a pleasurable experience, rewarding good play and encouraging further interest. His early designs around the time period that CPGC originated undoubtedly followed the Scottish link style of design, which differs from a more park-like feel similar to what CPGC is known for today. Park-like golf course landscapes are more closely related to the well-known classic English “Parkland” estate look that includes mature trees (generally landscape architecturally planted and arranged) with some magnificent long and open vistas through and around them. Later in his career, Bendelow’s course designs took on a more park-like feel. The Bendelow Design for the 18-Hole City Park Golf Course is shown in Figure 5. The Diagram shows changes in the size and configuration of CPGC over time. The blue shaded area shows the city-owned land that contained the original nine-hole course; the red -shaded area shows the land that was leased from the state and was used for the 1914 expansion, and green shows location of clubhouse from 1918 to present.

⁷ Dale Heckendorn, Tom Bendelow Biography, Internet document, accessed July 24, 2017.

⁸ Stuart Bendelow. Tom Bendelow: 1868-1936. Internet document, accessed July 24, 2017.

⁹ Ibid.





Source: *The American City*, January-June, 1917, page 86.



Map shows area of original 1913 9-hole course (in blue) and area opened in 1914 (red). Green area shows location of historic and current clubhouses

Figure 5. Overview of City Park Golf Course showing original and expansion areas.

In May 1918, the Bendelow designed course re-opened. The course played as 18 holes with #1 tee starting and #18 green ending at the club house. This was known as “not returning  hines.” Bendelow’s design featured bunkers that were completed with the renovation. Improvements also included a new clubhouse in 1918, which was designed by Frederick Ameter in a Pueblo-Revival style, and featured locker rooms for men and women, a lunch counter, and other services. The clubhouse was constructed in the northwest corner of the course at the corner of 26th Avenue and York Street. Among the trees that remained from the former tree nursery and in proximity to the trolley line, the clubhouse became the entrance and focal point for golfers. Players started and finished at this point, and the  routes of all holes and later golf cart paths radiated from this location—a pattern of use that continues to this day.



Source: Denver Public Library, Western History Collection, Item CHS-L2488

Figure 6. City Park Golf Course Clubhouse as Originally Constructed

In 1918, Denver also established green fees to use the course: \$6 annually, \$2 monthly, and \$0.50 daily¹⁰. It was at this time that the overall spatial patterns of the course were established.

The City Park Advisory Board was created in 1919. Among its first appointments were Dr. Harry C. Brown, George S. Van Law, and J. Frank Adams. Adams is credited with the development of

¹⁰ *The City of Denver, Municipal Facts*, August 1918, page 13.

CPGC and the construction of the original clubhouse (see Figure 6), and his appointment was made in recognition of his work¹¹.

The next round of changes and modifications to the site occurred in 1922, when the first irrigation system was installed. The conversion of the fairways to grass and then the greens from a sand/oil mix to turfgrass followed over the next few years.¹²

~~The next round of changes and modifications to the site occurred in the years immediately following 1922, when the first irrigation system was installed. The conversion of the tees and greens from sand to grass followed over the next few years. The irrigation system included 10 miles of water lines, serviced 472 sprayer heads, and was limited to the tees and greens.¹³ The introduction of irrigation marked the transition from a link-style course to a park-style course more characteristic of today's golf courses. However, the fairways remained in a natural state for many years to follow.~~

The other modifications included changing the course routing to “returning nines,” which is typical in today’s course design. This means that the greens on hole 9 and hole 18 ended at the clubhouse. To accommodate this play change, many holes had to be renumbered, but the configuration of the holes did not change. See Table 1, below.

Table 1. Comparison of Original Hole Numbering and Yardage (Source Denver Parks and Recreation)

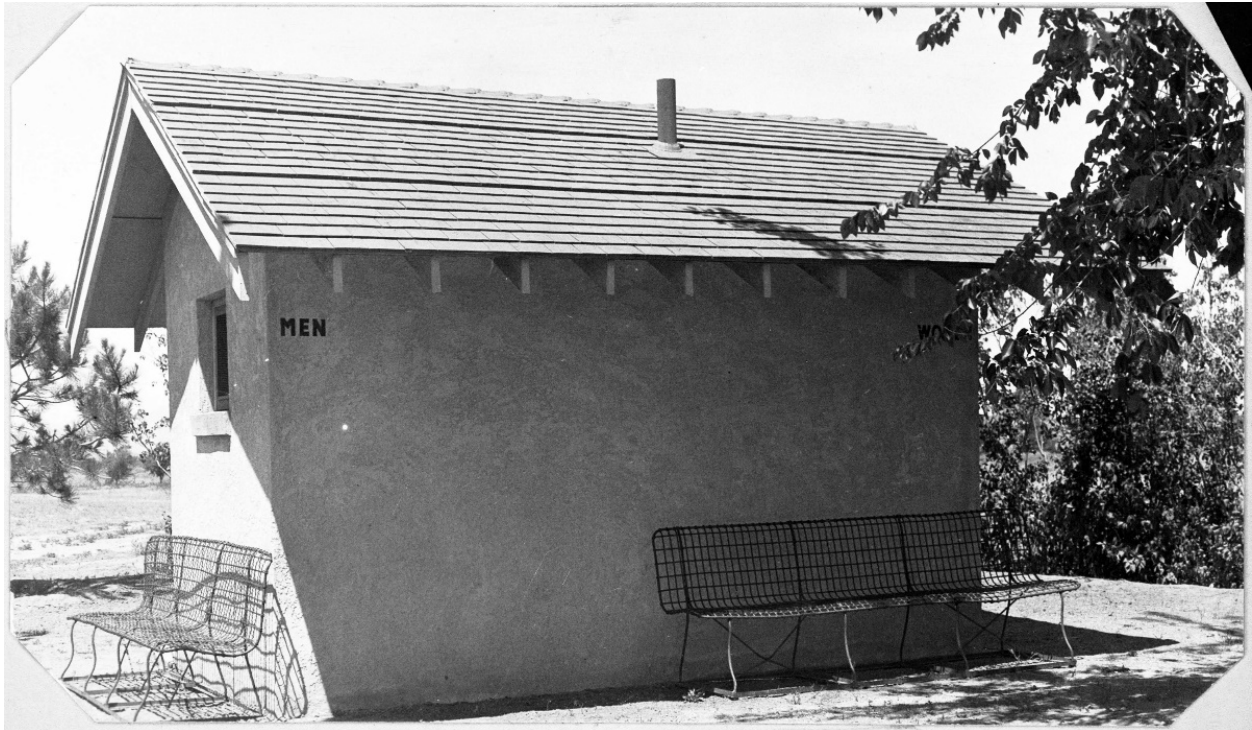
Hole Numbers, Current	Hole Numbers, 1913 to 1922	Yardage per Hole, Current	Yardage per Hole, 1922
1	1	407	420
2	2	359	369
3	3	490	471
4	4	195	312
5	5	328	309
6	6	369	415
7	7	218	230
8	11	336	369
9	12	425	413
10	13	558	603
11	8	540	556
12	9	187	147
13	10	344	376
14	14	430	343
15	15	392	377
16	16	197	197
17	17	486	450
18	18	477	431

¹¹ The City of Denver, *Municipal Facts*, June 1919, page 12.

¹² The City of Denver *Municipal Facts*, January-February 1922, page 7.

¹³ The City of Denver *Municipal Facts*, January-February 1922, page 7.

In addition, the Superintendent of Denver Parks, A.K. Vickery, reported in 1922 that the City was planning to spend \$20,000 to install grass on tees and greens. It appears that the work was completed in phases—in the spring of 1922, the fall of 1922, and the spring of 1923—so the course could remain open. The City also spent \$5,000 in 1922 to increase the size of the parking lot next to the clubhouse and a bathroom building (see Figure 7), which would later hold the mid-course snack shack, and several drinking fountains were installed along the course¹⁴.



Source: Denver Public Library, Western History Collection, Item x-20167

Figure 7. 1922 Bathroom Building on City Park Golf Course

By 1923, the course had become so popular that the City enlarged the clubhouse to accommodate the almost 650 members who used the course (see Figure 8). The original locker room was sized for only 150 people at a time, so the City spent \$30,000 to double the locker space, and a large addition containing a new kitchen and eating area was built¹⁵. In addition, the city constructed a starter house in 1923 located to the east of the clubhouse to the south of #1 tee, and a shelter house in 1924 near the mid-point of the course (see Figure 9 and Figure 10).

¹⁴ *The City of Denver, Municipal Facts*, January-February 1922, page 4.

¹⁵ *The City of Denver, Municipal Facts*, October – December 1923, page 4.



Source: Denver Public Library, Western History Collection, Item x-X-20168

Figure 8. The Expanded Clubhouse, Circa 1950



Source: Denver Public Library, Western History Collection, Item x-X-20169

Figure 9. 1923 Starter House




Source: Denver Public Library, Western History Collection, Items X-20165, X-20169

Figure 10. 1924 Shelter

Period 2: Refinements and Improvements—1925 to 1965

During this era, the course experienced a lot of change and started a multi decade transformation from a link style to a park style course. There were significant advances in turf grass science and management, irrigation systems, and more precise mowing equipment, allowing relatively manicured conditions. The result, in addition to advancements in golf equipment, started to change how courses were designed and played. For example, because of improvements in turf science and maintenance practices, greens played faster, thus requiring flatter greens with less pitch or slope in the design.

From the mid- to late-1920s, the greens and tees were modified to make them easier to play.

 This included the continuation of converting the tees and greens from sand to grass. ~~During the early years of the course, mats were used in place of grass on the tees so that people could avoid hitting off of dirt.~~

During the early years of the course, mats were used in place of grass on the tees so that people could avoid hitting off of dirt.¹⁶

¹⁶ *Golf in Denver*, 38.

An early aerial photograph of the course, taken around 1923 (see Figure 11), shows that trees had been planted along the course's perimeter, on the south curb line of 26th Avenue between Josephine Street and Steele Street; on the west side of Colorado Boulevard between 26th Avenue and 23rd Avenue; near the intersection of 23rd Avenue and York Street; and on the east side of York Street between 23rd Avenue and 26th Avenue, encompassing the clubhouse. Only a small number of trees were planted on the course itself, and several greens are still a sand/oil mix. In fact, the course maintained a link-style design with few trees until the 1960s.



Source: Denver Public Library, Western History Collection, Item X-27185

Note tree plantings along eastern and northern edges of course and 23rd Avenue along southern edge

Figure 11. Aerial View of City Park Golf Course and City Park, circa 1923

The City Ditch, which crossed CPGC and serviced agricultural operations, extended north of the course. It appears that the ditch ran across the land that would become City Park and CPGC as early as the 1870s. According to records found in the Denver Parks and Recreation Department, in the 1890s, the flow of water was cut off to the area north of City Park due to health concerns. When City Park was developed, water from the ditch was used for irrigation, and by the mid-1890s, the portion of the ditch that ran across the park was filled in, and the water flowed through pipes that had been installed. The ditch ran across the golf course until the 1950s when, according to city records, it appears that the ditch was filled in as part of a 1955 City Bond Fund program that focused on water improvement projects. During the 1930s, a brick-lined sewer was installed that ran across City Park, the golf course, and then north under York Street. The scar from that installation is visible on Figure 13.

Sometime during this period, a maintenance yard was constructed. The aerial image taken in 1933 (see Figure 13) shows a yard and building in the same location as today's maintenance

facility. The yard was likely expanded in the 1950s since it is similar to a yard built at another city-owned course (Willis Case) in 1954.¹⁷



Source: Denver Public Library, Western History Collection

Note road running north-south across course (at Steele). At this time, all greens appear to have been planted with grass.

Figure 12. Aerial View of City Park Golf Course and City Park, circa 1925

The post-World War II period brought dramatic change to CPGC. An extensive set of plans from the mid-1940s proposed the construction of a new clubhouse on the highpoint of the course to take advantage of the dramatic view of the Front Range (see Figure 14). The course would have been made into a smaller 9-hole course and the facility renamed to Mountain View Golf Course.¹⁸ This concept ultimately never made it past the proposal phase.

¹⁷ Denver Parks and Recreation.

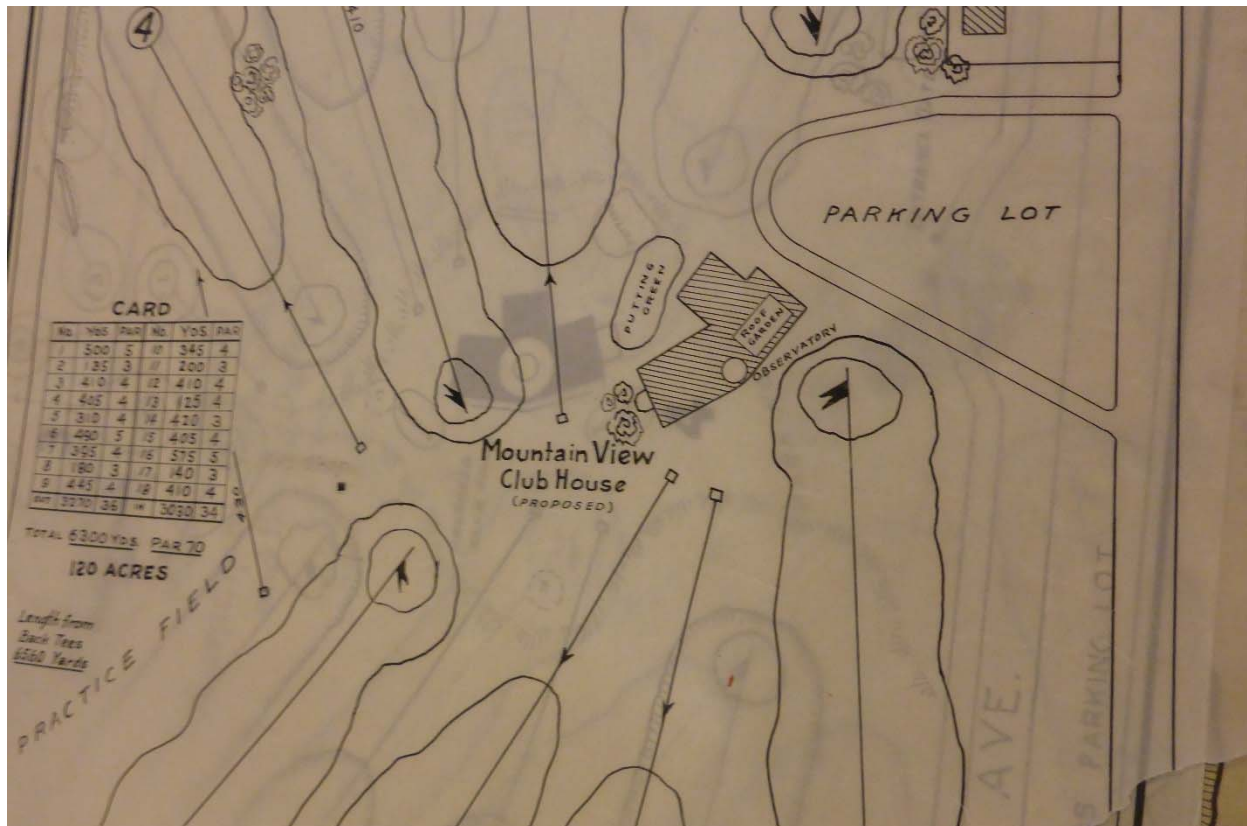
¹⁸ Plans on file at Denver Public Library.



Source: City of Denver "Map It Denver" Webpage, accessed August 12, 2017.

Note tree plantings along course boundaries, 23rd Avenue running along southern edge of course, and open areas between fairways Red arrow shows path of sewer line.

Figure 13. Aerial View of City Park Golf Course, circa 1935



Source: Denver Public Library, Western History Collection,
Shows relocation of clubhouse to center of course.

Figure 14. Photograph of Proposed Mountain View Golf Course Design, circa 1946

In the mid-1960s, the golf course underwent a major visual transformation from a links-style course to a park-style course. This was made possible by the extensive irrigation system installed in the mid-1940s when the system was expanded from approximately 470 sprinkler heads to more than 1900.

A link-style course favors the use of the local, naturally occurring vegetation such as native grasses and the fairways typically utilize the undulating natural terrain due to sandy soils. The style of play on a links course is considerably different; these courses tend to be characterized by uneven fairways, thick rough, and small, deep bunkers with few trees, if any. A park-like course is more pastoral in setting, formally designed, and oftentimes features extensive terrain-shaping, and large bunkers to enhance the player experience. These courses are typically made up of carefully chosen and maintained grasses that cover the fairways, greens, and common areas in between, as well as numerous trees lining the fairways and well maintained landscaping. As noted above, portions of CPGC had seen the installation of an irrigation system in the 1920s, and a mixture of grasses (native species and bluegrass) had been planted on the fairways. Figure 21 shows that much of the course remained dirt until recently.

In 1959, more enhancements and layout modifications were made to holes 4, 5, and 6: new greens on holes 4 and 5, and new tees on holes 5 and 6. Hole 4 was likely shortened to a par three and hole 5 went from two greens to one green (see Figure 15 below). These changes may have been related to the widening of Colorado Boulevard, which occurred during this time frame. In aerial images taken between 1935 and 1995 (Figure 13 and Figure 19), Colorado Boulevard has been widened and the trees along the easterly edge of the course have been removed.

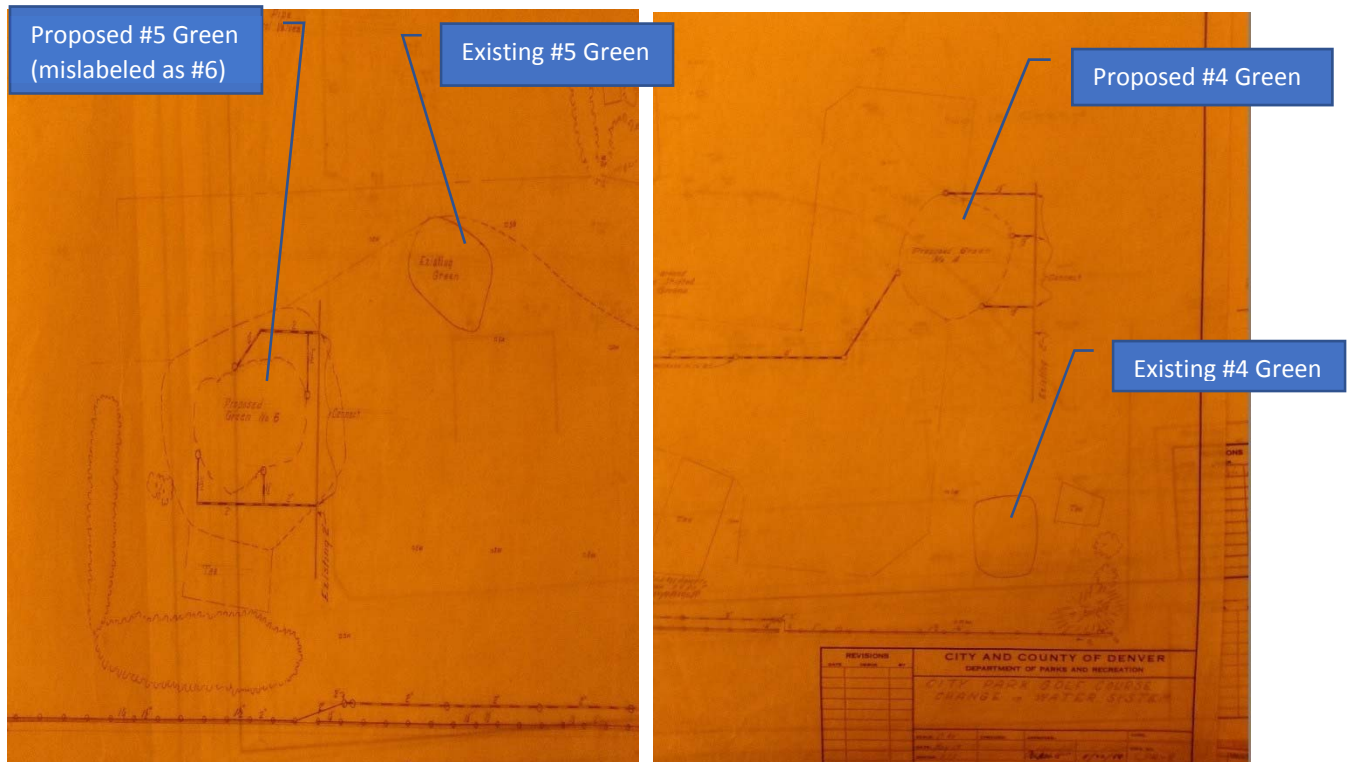


Figure 15. 1959 Plans for irrigation system showing re-designed greens on eastern side of course

The introduction of the golf cart also changed how players experienced and used the golf course. Beginning in the years after World War II, golf carts had gained popularity and by the early 1960s, they were widely accepted by golfers. The golf cart allowed the game to be played by older golfers, and allowed holes and tees to be farther apart. Cart paths became necessary, and were installed on courses around the country. At CPGC, gravel paths were added and paved paths were added periodically over the years.

In the late 1950s, the City began the process to formally acquire the 50-acre parcel of land it had been leasing from the state since 1914. The rent that the state charged had increased steadily over time. During the first years (1914 to 1918), the state charged \$2.50 per year. From 1919 on, the fee began to increase gradually until, between June 1957 and June 1958, the fee

had increased to a \$20,000 per year. To remove this monetary burden, the City and the state swapped parcels of land, and this exchange was finalized in 1958¹⁹.

In 1964 and 1965, the clubhouse was remodeled and the parking lot was expanded again. In that same time frame, the first automated irrigation system was installed on the course. Prior to this time, the existing irrigation system only watered tees, fairways, and greens around the holes, which also contained the majority of the trees on the course. The remainder of the course retained natural grasses or consisted of dirt areas. An irrigation system that would water every part of the course would not be installed until 2001.



Source: City of Denver Public Works Department

Note narrow width of Colorado Boulevard and row of trees along street and configuration of fairways.

Figure 16. Detailed View of the Eastern Side of the Course, circa 1935

¹⁹ City of Denver. City Park Golf Course History (CPGC History). Arrows indicate area affected.



Source: City of Denver Public Works Department

Note expanded width of Colorado Boulevard and modified configuration of fairways. Arrows indicate area affected.

Figure 17. Detailed View of Eastern Side of the Course, circa 1995

Period 3: Maturation of City Park Golf Course—1966 to 2001

During this period, CPGC experienced fewer major changes; instead, minor modifications improved the course. For example, from the mid-1960s to the 1980s, tree planting started in areas that were now watered regularly. In the 1970s, a significant tree-planting effort was completed. The continued expansion of the irrigation system was one of the less obvious, but highly significant, benefits that occurred. Another extension of the irrigation system in the early 1980s allowed more areas of the course between the fairways to be watered, helping to

enhance the course's now park-like feel. In addition, aerial images show that sometime in the late 1970s or early 1980s, the former superintendent's residence along 23rd Avenue, near the tee box for the 7th hole, was demolished and the course was modified to incorporate this new piece of land.

In the 1970s, golf experienced a boom in course development and construction, which continued through the 1980s and into the early 1990s.

In 1995, a re-design of CPGC was considered that shared certain concepts with both the mid-1940s proposed design and the current proposed plans. In all three re-design concepts, a new clubhouse has been proposed for the highpoint of the course to take advantage of the spectacular views.




Source: City of Denver Public Works Department
Note location of clubhouse in middle of course.

Figure 18. 1995 City Park Golf Course Master Plan

This trend was fueled by the rise of televised golf programs. Many courses in America went through renovations and expansions to keep up with the demand and the level of play. Significant advancements in technology changed golf equipment during these decades as well; balls become multi-layered, solid-core, and urethane covered; and special metals were used to make clubs in wind dynamic shapes to enhance the game. The golfing world was introduced to the “Big Bertha” driver, which allowed a novice golfer to drive the ball much farther than before. These advancements forced many courses to build longer holes. Today’s average course is 7,100 to 7,200 yards long. CPGC is 6,708 yards long and is, as can be seen on any map, land locked with no additional opportunity for expansion.

Period 4: Another Era of Change—2001 to Present

The new millennium brought another era of change to CPGC. Beginning in 2001, the City made the following changes to the facility:

- Acquisition of the long-time gas station property that occupied the southeast corner of 26th Avenue and York Street. This allowed the expansion of the parking lot on that corner.
- The 2001 demolition of the 1918 clubhouse and the original snack bar and toilets (located mid-course) and starter house, replaced with new larger buildings (designed by  Parrish Architecture).
- Creation of a youth golf program area (The First Tee) on the northeast corner of 23rd Avenue and York Street, with a four-hole short course and a small clubhouse/classroom building (2005).
- Alteration and improvement of the driving range.
- Installation of public art along York Street.
- Design and installation of a new irrigation system—by RRI, Inc., and Valleycrest Landscape Companies. This new system allows the entire course to be watered for the first time.
- Modification of tee boxes and greens. Construction of additional one or two tees at each hole to enhance the level of play.
- Excavation for an irrigation pond and new pump house on the southeast side of the course.
- Construction of tee boxes, re-grading of eastern side of the course to create small hills and rolling terrain, and creation of a stormwater detention basin near the driving range—all with excavated material from the new irrigation pond.
- Change from potable to reclaimed water for the irrigation system.
- Removal of a number of fairway bunkers from the course.
- Installation of weather station operated by Denver Museum of Nature and Science on a small hill built during re-grading of the eastern side of the course (2008).

- Installation of permanent cart paths on the course.

Between the modifications, system and technology upgrades, and the addition of the First Tee program, CPGC was brought up to modern golf course design standards.

As recently as 1995, an aerial photograph (see Figure 19) clearly reveals that many areas between the fairways were not irrigated and aesthetics were far below the current standard for modern golf courses. Efforts to bring the course up to current standards required the removal a total of a small number of trees due to the balancing of the earthwork from the construction of the irrigation pond. Trees were planted on the east end near Colorado Boulevard (hole 5), and in focused areas along 23rd Avenue and around the driving range. This is clearly noticeable in a sequence of aerial photographs from 1995 (Figure 19), 2008 (Figure 20), and 2014 (Figure 21).



Source: City of Denver Public Works Department
Note open dirt areas between grass-covered fairways.

Figure 19. Aerial View of City Park Golf Course, circa 1995



Source: City of Denver Public Works Department
Note some of the areas not covered with grass are left as natural or no-mow areas and the addition of the pond and hills on the eastern side of the course.

Figure 20. Aerial View of City Park Golf Course, circa 2008



Source: City of Denver Public Works Department

Note complete coverage of course with grass and more extensive vegetation.

Figure 21. Aerial View of City Park Golf Course, circa 2014

D. EXISTING CONDITION ANALYSIS AND ASSESSMENT

Summary of Current Conditions

Opened in 1913, CPGC was the first golf course established for the City of Denver. Originally a nine-hole course, it was expanded and renovated to an 18-hole course within the next five years. At the time of its re-opening with 18 holes in 1918, it was the longest golf course in America, either privately or publicly owned, prominently sitting on 136 acres east of town with majestic views of the Rocky Mountains. As noted above, the course was designed by renowned Scottish Golf Course Architect, Tom Bendelow. Bendelow was one of the pioneer architects of American golf and designed two courses in Colorado: the Lakewood Country Club course and CPGC in Denver. Bendelow's earlier designs resembled the Scottish link-style courses, with few trees, sand greens and tees, and fairways left in their natural states. Bendelow's design philosophy was to capture the natural features of the site. With the Rocky Mountains as a backdrop, the 18-hole course had unobstructed views.

Over the next decade (1918-1930), the course began its transformation from a link-style course to a park-style course. Major improvements included converting the sand greens and tees to turf and installing irrigation. These improvements began to change the aesthetic and visual quality of the course, as well as the golfers' experience.

During the following decades (1930-2010), the landscape character of the course continued to evolve based on multiple influences:

- Hole numbering changed to accommodate hole 9 and hole 18 ending at the clubhouse. The routing generally continued to reflect Bendelow's design.
- Hundreds of trees were planted by Bob Lind, Director of Golf and Maintenance, to shape views from within and outside the course by creating tree-lined fairways and backdrops to greens and tees.
- Facilities such as the clubhouse underwent multiple renovations and reconstruction over the decades to accommodate increased membership and changing needs.
- Significant advances in turf grass science and management, irrigation systems, and mowing equipment occurred.
- To accommodate players of differing abilities and the advancements golf equipment; thus, additional tees were added and greens modified to increase the challenge of play.
- The construction of the irrigation pond, the installation of an automated irrigation system, and major reshaping of the terrain occurred.
- CPGC incorporated the First Tee youth golf program.
- Installation of side walk from Clubhouse to 23rd Street.

During its 100+ years of operation and use, CPGC has experienced constant change. The link-style course has transitioned into a beautiful park-style course that offers players a world-class perspective on the Denver skyline and the Rocky Mountains.

Statement of Significance and Character-Defining Features

This Condition Assessment identifies and analyzes the salient physical qualities of the CPGC that relate to its period of significance, defined for the purposes of this study as 1913 to 1965. In 1986, City Park Golf Course Historic District was placed in the National Register of Historic Places as part of a Multiple Property Submission, the extensive Denver Parks and Parkway System, under the *Community Planning and Development* and *Landscape Architecture* areas of significance. The significance statement for CPGC included in the National Register nomination form lists the period of significance for the golf course as 1913, its opening date. The National Register of Historic Places online database, which includes updated information and analysis by National Park Service historians, lists the period of significance for CPGC as 1900 to 1924 based on the National Register criteria and Areas of Significance depicted in Table 2, below²⁰.

Table 2. Applicable National Register Criteria and Areas of Significance for CPGC National Register Listing (NRHP Website)

National Register Criteria	Areas of Significance
Criterion A: Events that have made a significant contribution to the broad patterns of history	Community Planning and Development
Criterion C: Distinctive characteristics of a type, period, or method of construction	Landscape Architecture

Given the additional research and information compiled for this report, this study recommends expanding the period of significance for CPGC from 1913 through 1965 to account for significant dates that helped the golf course achieve its historic character, most notably the conversion of tees and greens from sand to grass, modifications to holes, and additional tree plantings in the mid-1950s during the Babe Lind era that transformed the golf course from a link-style to a park-style golf course. A 1913 through 1965 period of significance reflects the period when major changes were made to the golf course's composition and layout, from the time of the course's opening through the length of time that the property "attained the characteristics that qualify it for National Register listing." This period of significance was defined using two NRHP publications, *How to Complete the National Register Form*, and National Register Bulletin 18, *How to Evaluate and Nominate Designed Historic Landscapes*.

In addition to a period of significance, the National Park Service delineates seven aspects of integrity that can be used to determine if a property or site can still convey those qualities that made it significant and eligible for the NRHP.

²⁰ National Park Service. *Denver Park and Parkway System (Theme Resource)*, Internet Document, accessed July, 2013.

The seven aspects are:

- Location
- Design
- Setting
- Materials
- Workmanship
- Feeling
- Association²¹

When evaluating the integrity of designed historic landscapes such as CPGC, the landscape should continue to convey its historic character, and retain its original and/or historic features. For a historic designed golf course, this typically translates into retention of historic design intent, property boundaries, important spatial relationships, circulation system, topography/grading, vegetation, and architectural features. Since CPGC re-opened in 1918, it has maintained integrity of location: it occupies the same spot in the City, with little change in its boundaries since 1965.

The design of CPGC evolved during its period of significance from a link-style to park-style course, but the routing generally continues to reflect Bendelow's original design intent and the park's overall design layout has not changed significantly since 1965. The loss of historic buildings has been significant, although the new clubhouse is generally on the same location as the original clubhouse, but buildings were never as important to the overall historic character of the golf course as its layout, topography, and vegetative features.

The CPGC's setting in the middle of the City adjacent to City Park and surrounded by residential development is retained. However, the loss of historic building fabric and continual upgrading of the course has compromised the golf course's integrity of materials and workmanship.

The CPGC's topography and vegetation that evolved through 1965 are largely intact, and the historic feeling and association of the CPGC as a park-like golf course is, for the most part, retained.

Typically, a property must possess "several, and usually most of the aspects" of integrity. Based on this analysis, the integrity of CPGC is considered fair to good.²²

The 1986 National Register nomination form listed several physical features (see Table 3) that helped define the character of the course, and these are discussed below, including the list of contributing features included in Section 7, page 71, of the National Register nomination, as informed by the 2001 City Park Master Plan. The current status of these features is summarized in the right-hand column of the table below. These features are grouped under three headings: Built Features; Topography and vegetation; and Design, Layout, and Spatial Relationships.

²¹ National Park Service. *Section VIII. How to evaluate the integrity of a property.* [How to Apply the National Register Criteria for Evaluation](#). Internet Document, accessed July 12, 2017.

²² Ibid.

Table 3. NRHP Character-Defining Features

Character-Defining Features	Text in NRHP Nomination	Current Status
BUILT FEATURES		
Clubhouse or Golf House (1918); expanded in 1923 and 1964	Pueblo Revival Golf House at the NW corner of the course was built in 1918 and enlarged in 1923. The main block of buildings rises one story in height behind the pergolas and two stories in height behind the central portico. Flat-roofed building is of stucco, with red tile on the second-story buildings.	Removed in 2001 and replaced with current structure near site of historic building
Starting House (1923)	Other structures on the course include a small starting house (stucco with red tile roof).	Removed in 2001
Snack Bar/Toilet (circa 1920)	Mid-course, small gable and toilet facility	Removed in 2001 and replaced with current structure near site of historic building
Storage/Maintenance Yard (current buildings date to early 1970s)	South side of course across from City Park Shops	Appears on maps from early 1960s, but current buildings were constructed in early 1970s; it is now surrounded by a high wooden fence
TOPOGRAPHY AND VEGETATION		
Topography, Mountain Vista, and Views*	From the high point near Colorado Boulevard, the terrain drops to the west. In a natural swale, there are several giant plains cottonwoods, which also are found along the street on the west perimeter. Looking back to the east, the rise in the course becomes the horizon, providing an illusion of vast space. According to 2001 City Park Master Plan, the topography also allows open views of the course from City Park to the south. The natural topography of the land permits an unequalled view of the mountains and the Denver Skyline.	Topography has remained consistent since the course opened; the mountain and city views also have remained, but are obscured at times by the many trees

Character-Defining Features	Text in NRHP Nomination	Current Status
Planting Plan/Plant Material, including Select Trees	<p>The greens and tees are surrounded by islands of evergreens. These islands are an excellent mixture of forms, colors, and textures. The fairways are, for the most part, planted only with grass.</p> <p>Greens and tees are surrounded by islands of evergreens.</p> <p>Giant plains cottonwoods also are street trees along the west perimeter. In a natural swale, there are giant cottonwoods. Other mature street trees are along the golf course perimeter.</p>	<p>Some large cottonwoods remain along 23rd Avenue and along York Street. Most other trees are believed (by the City Forestry Department) to have been planted at some point from the mid-1960s to today.</p>
DESIGN, LAYOUT, AND SPATIAL RELATIONSHIPS		
Historic Layout/Design	<p>The layout of the course is conventional, consisting of wide and straight fairways. The fairways are, for the most part, planted only with grass. The layout provides a sense of vastness created by the openness of the course.</p>	<p>The overall layout of the course, and the location of the clubhouse and snack bar, have remained consistent since the 1920s. The location of various holes, tees, and other features have changed over the years. The design changed substantially as the course has transitioned from links to park style.</p> <p>The large number of trees planted in recent years has somewhat changed the “sense of vastness created by the openness of the course”.</p>
Boundary and Use**	<p>The CPGC has continued to serve as a golf course since 1913. The boundary of the park, extending the full length of City Park east to west between York Street and Colorado Boulevard, has remained constant, with minor exceptions, since 1913.</p>	<p>Remains the same; the golf course’s position and relationship with City Park to the south is important</p>

* Mentioned in text of National Register Nomination, but not listed out as a character-defining feature per se.

** Use is listed as a character-defining feature in the Nomination, and boundaries are discussed in the text.

A more detailed discussion is provided below regarding CPGC's Design, Layout, and Spatial Relationships; Topography and Vegetation; and Built Features. This discussion delineates what is important and what has changed in terms of character-defining features in each of the three categories, followed by recommendations to ensure that the character-defining features are retained to the extent feasible when planning and designing changes and alterations to CPGC.

As part of the City of Denver's Platte to Park Hill Stormwater System Program, the City is considering significant changes to City Park Golf Course. For the first time since the early 1920s, the routing of holes and fairways will change. The clubhouse may be relocated to a spot that takes advantage of the panoramic views noted in the NRHP nomination, a move first proposed in the 1940s. The recommendations below are intended to ensure that the surviving character-defining features of CPGC remain, and that CPGC can retain its status as a National Register listed property. These recommendations complement and supplement the design standards set out by the City of Denver as part of its decision-making process to select a design/build team for the drainage project in the summer of 2017. These design standards are included in the final section of this report.

Built Features

As noted above, the buildings listed in the 1986 National Register nomination (the clubhouse, starter house, and snack bar/toilets) were all removed in 2001. The storage/maintenance yard fixtures remain in the location they occupied in 1986. Those buildings that have been removed no longer contribute to the historic integrity of the site, but their replacements (the 2001 clubhouse and snack shack bar; see Figure 22, Figure 23, and Figure 24) are located in approximately the same spot, and so maintain the spatial patterns that have been in place since the early 1920s.



Source: Atkins, April 2016

Figure 22. 2001 Clubhouse and Parking Lot Looking Southeast



Source: Atkins, April 2016

Figure 23. 2001 Snack Bar and Toilet Building, with Cart Parking Area



Source: Atkins, April 2016

Figure 24. Maintenance and Storage Yard

Recommendations:

1. Use historical precedents to inform building locations, numbers, groupings and relationships, understanding that building needs and locations may change over time

but that the historic relationships and spacing of buildings to one another and to the landscape should be a strong consideration.

2. New and modified buildings and structures should have a light touch in the landscape, consistent with historic precedents.
3. New and improved buildings and structures should be incorporated into the golf course landscape, and appear as ancillary rather than dominant features.
4. Consider impacts of new and modified buildings and features on viewsheds to and from the golf course, and of the mountains.

Topography and Vegetation

Topography and Mountain View

The topography of CPGC has remained constant since the construction of the course. The course gradually slopes from its highest points on the east side of the site to its lowest points near the northwest corner of the parcel. The relatively flat, smooth area at the “top” of the course (the eastern third of the site) was given a more undulating feel in the early 2000s when dirt excavated for a new irrigation pond was used to create small hillocks and rises (see Figure 25).

This also is true of the sweeping views of the foothills and downtown Denver that can be seen from many parts of the course. These views are especially dramatic from the elevated portions of the course as well as from portions of 26th Avenue and from 23rd Avenue northwest across the course.



Source: Atkins, May 2016

Figure 25. View of CPGC Looking Southwest Showing Topography Created by Fill from Pond Construction

Select Trees and Historic Plantings/Plant Material

An early aerial photograph of the course, taken around 1933 (Figure 13), shows that some trees had been planted along the course’s perimeter. Trees were located along the south curb line of 26th Avenue between Josephine Street and Steele Street; on the west side of Colorado

Boulevard between 26th Avenue and 23rd Avenue; near the intersection of 23rd Avenue and York Street; on the east side of York street between 23rd Street and 26th Street; encompassing the clubhouse; and then with only a scattering of trees on the course itself.

The course maintained the links-style design, with few trees, until the 1950s. The installation of irrigation systems (beginning in the 1920s) helped give the course the park-like feel it has today. But this process was slow and iterative. From the 1920s to the 1990s, irrigation efforts focused on the playable areas. The areas between those features were only gradually included in the irrigation plans and systems. The sequence of aerial photographs in Figure 19, , and Figure 21 from 1995 through 2014 (pages 28-30) clearly shows the many areas between the fairways that were not yet irrigated.

In addition to grass, the installation of irrigation systems facilitated increased plantings of trees and other vegetation. As noted above, some trees were in place around the perimeter of the course as early as the 1930s. While some trees remained from the tree nursery that had existed at the site, others appear to have been planted as part of the course development. More extensive tree and shrub planting began in the 1950s, setting a gradual pattern that continues today. Director of Golf and Maintenance, Babe Lind, oversaw the tree plantings around the greens that could benefit from the regular irrigation those areas received. It appears that many of the trees planted by Lind were those identified in the 1986 NRHP nomination. A 1995 aerial photograph illustrates how much more of the course had been covered by vegetation (see Figure 19). Figure 26 shows how the entire course is now covered with grass.

Today, CPGC consists of a lush, verdant space filled with trees, shrubs, grasses, and other vegetation, making it feel more like a park than a golf course. The installation of a complete irrigation system that waters every part of the course in the early 2000s has transformed the landscape, completing a process that began in the 1950s.




Source: Atkins, May 2016

Figure 26. View of CPGC Looking Northwest Showing Extensive Grass and Vegetation

In the 31 years that have passed since the NRHP nomination was completed, the City Forestry Department has carried out extensive inventories of the trees on the course and rated each based on their health and potential longevity. These surveys have found that many of the trees and plantings that were cited in the NRHP nomination have died or been replaced. A few of the oldest trees mentioned in the nomination (such as the cottonwoods along York Street and 23rd Avenue) are still standing, but they are now more than 100 years old and are reaching the end of their lifespan. Other species of trees on the site have been in place for 50 years or more. The results of the most recent tree inventory are included in Appendix A.

Recommendations:

1. Maintain general topography of the site close to the existing condition; gently rolling from the high-point of the property in the middle and east side and falling west.
2. Preserve open views to Downtown Denver and the spatial quality of “vastness.”
3. Preserve open views of the golf course from City Park.
4. Reinforce the strong tree-lined boundary on the CPGC’s perimeter, retaining existing trees where possible, and planting new trees to reinforce this boundary.
5. **Preserve historic tree groves and other mature specimen trees.** 
6. Use existing trees to frame views to Downtown Denver and the Front Range.
7. Preserve pastoral setting.
8. Maintain “green” wall-to-wall appearance and view shed into and across the course.

Design, Layout, and Spatial Relationships

The overall layout and use of the facility has remained constant since the course re-opened as an 18-hole facility in 1918. The entrance and departure point for the course has always been the northwest corner of the site, which has held both iterations of the clubhouse. The routes of the greens and paths have radiated from this area. Using this location helped create the spatial patterns that the course still follows today. These spatial relationships were reinforced by the layout of the course and the path that golfers followed around the site.

The pedestrian experience is extremely limited or non-accommodating for non-golfers. The only formalized sidewalk is along York Street and it was constructed very recently (see Figure 27). Only social dirt paths exist around the perimeter of the north, east, and south sides. Paved sidewalks run along the west side of the course.



Source: Atkins, April 2016

Note public art piece installed next to driving range.

Figure 27. View of Sidewalk Along York Street Looking North

During the four major periods of development of CPGC, the course's playability, strategy, and character have evolved to improve the golfer's experience. Part of the course's history is that it is a living asset that must evolve and grow. While this is certainly true for the grass, trees, and other landscaping, it also must be true for the game of golf. When the course was first built, players would use hickory shaft golf clubs to hit a leather-stitched ball stuffed with goose


feathers. The length and difficulty of the holes has changed with the use of more powerful drivers and clubs, and the installation of golf cart tracks has altered playability of the course as well. External factors, such as the widening of Colorado Boulevard in the 1950s, resulted in changes to the east side of the course, including relocating the paths of holes 4, 5, and 6. These changes all occurred during the CPGC's period of significance.

Changes to the design of the course were even more evident by 1986. The design philosophy that Bendelow followed emphasized the Scottish link style, which used existing land forms and placed few, if any, trees on the landscape. He adhered to a look that used the natural features of a chosen site as much as possible. At the time Bendelow completed his design, the fairways and greens that he laid out consisted of sand and the open areas between these fairways contained natural grasses or were simply dirt.



Source: Atkins, May 2016

Figure 28. View of CPGC Looking West Showing Extensive Grass and Vegetation

By 1986 when the course was nominated, the greens and fairways of the course had been transformed and were covered with irrigated grass and surrounded by trees and other vegetation (see Figure 28). The holes and tees had been moved multiple times, the eastern side of the course had changed because of the widening of Colorado Boulevard, and formal paths ssed the course to allow golf carts to travel between the holes. The only remaining element of Bendelow's design was the routing of the fairways. In many ways, the design of the course has been evolving steadily since the facility first opened. The large-scale alterations that

occurred in 2001 also changed the western side of CPGC. (see Figure 29) and, later, by the installation of the First Tee youth golf program area (see Figure 30). This section of the course changed again in the early 2000s when dirt excavated from the irrigation pond on the southeast side of the course was placed next to the Number 10 fairway.



Source: Atkins, April 2016


Figure 29. View of CPGC Looking East Showing undulating terrain on west side of course



Source: Atkins, April 2016

Figure 30. View of 2005 First Tee building

Recommendations:

1. Retain and reinforce historic boundaries and edges of the golf course.
2. Design holes to play in the same corridors that currently exist to the greatest extent feasible to preserve historic layout and feel of the course.
3. Golf course grading/shaping should be subtle with no severe slopes, thus making the course more walkable, reflecting the original Bendelow golf course design
4. Greens, tees, and bunkers should consist of simple shapes, slightly enlarged to better resemble the original Bendelow design features.
5. Limit the number of bunkers, and—when used—be strategic in their placement.
6. Preserve  circulation pathways and spatial patterns to the greatest extent feasible. All course activities have begun and ended at the northwest corner of site and all pathways, entries, and parking have been placed there.
7. Design storm water systems to be indistinguishable from nature itself.
8. Maintain the long “fetch” view that is a trademark of early landscape architects like CPGC designer Tom Bendelow and is a highlight of park-style golf courses like CPGC.
9. Use historical precedents to inform location and design of historical interpretative signage and other wayfinding signage, and integrate this signage sensitively into the landscape.

E. SUMMARY AND CONCLUSIONS

This document has summarized the history of City Park Golf Course and documented the numerous changes and alterations to the golf course during the four major time periods of development of CPGC. Each of these periods contains significant changes to the cultural landscape, which, in themselves, become features that have assumed historical significance. This evolution continues today, with redesign of the site for storm water drainage and hence the beginning of another historical period. The recommendations for design, layout, spatial relationships, topography, vegetation, and built features laid out above, identify key elements to keep true to the course's history and integrity.

On July 21, 2017, the City of Denver announced that the design/build team had been chosen to carry out the proposed changes to CPGC. The overall course layout will be done by the firm iConGolf Studio working with golf design adviser Hale Irwin. If a new clubhouse is constructed it will be designed by architect Johnson Nathan Strohe. The city's announcement noted that design elements could include:

- An 18-hole parkland style course
- Additional course yardage
- A new, relocated clubhouse that allows for "returning nines"
- A full driving range that accommodates all clubs and meets safety needs without netting

In order to protect the historic resources and character of the course, the City formulated Design Standards and technical requirements for the Course redesign. The design standards state:

- Elements such as the topographic rise and panoramic views that contribute to the "illusion of vast space" cited in the NRHP must be preserved.
- Any trees or plantings that have received a high rating by the City Forestry Department must be protected and preserved.

Numerous public workshops helped develop additional guidance related to specific features:

Buildings and Structures

- Clubhouse—built in 1918 and replaced in 2001. The proposed changes will see the clubhouse move to a new location toward the mid-point of the course that takes advantage of the mountain views mentioned below.
- Toilet/Snack Bar Building—built circa 1920 and replaced in 2001. This non-historic building may be replaced by the new clubhouse if it is moved to mid-course.
- Storage/Maintenance Yard—built circa 1970 and still in use. This area would be incorporated into the new clubhouse that could be moved to mid-course.

Designed Features

- Historic Layout/Design/Use—while the fairway layout and facility use have remained consistent, the overall course look and feel has changed dramatically since the 1920s. Under the proposed changes to the course, the hole routing will remain consistent, but some fairways and holes may shift to accommodate the new clubhouse. The overall length of some fairways and holes may change as has happened many times in the past.
- Historic Planting/Plant Material—few of the trees and plantings mentioned in the nomination form remain today other than the grass areas on the fairways and around the holes. Most existing shrubs and other plantings were installed in recent years and would remain wherever possible under the new design.
- Select Trees—few of the trees mentioned in the NRHP nomination remain today except the cottonwoods on the perimeter of the course and those around some holes. Many older trees have been removed as holes have been moved over the years and others have died from age, the gray water used for irrigation, or other causes. Any tree trees that meet the proper Forestry criteria will be protected to the greatest extent possible.

Natural Features

- Topography—the topography of the course has not changed since the facility opened in 1914, and the general topography would not be changed by any of the proposed designs.
- Mountain View—the views of the mountains and downtown have remained consistent and would not be altered by any of the proposed changes. The clubhouse could be moved to a new location at the mid-point of the course to take advantage of the views, a move first proposed in the 1940s and again in 1995.

The media announcement noted that before any proposed design can proceed, it must be reviewed and vetted by both the public workgroups that have been established and by the Colorado State Historic Preservation Office (SHPO). As the new course designs are evaluated and reviewed by City staff, members of the public workgroups, and the SHPO, they will use the features laid out above to measure any potential impacts to the historic character and integrity of the course.

REFERENCES

American Society of Golf Course Architects. *Thomas Bendelow's Golfing Philosophy*, Internet document, accessed July, 2017.

The American City, Town-County Edition. New York: The Civic Press, January-June, 1917.

City Park Golf Course History. Denver: Denver Parks and Recreation Department.

Bendelow, Stuart. *Tom Bendelow: 1868-1936*. The Cultural Landscape Foundation., Internet document, accessed July, 2017.

Denver Municipal Facts. Denver: City and County of Denver.

Heckendorn, Dale, *Tom Bendelow Biography*, Denver: History Colorado, Internet document, accessed July, 2017.

The History of Denver. Wikipedia, Internet document, accessed July, 2014

Mohr, Rob and Leslie Mohr Krupa. *Golf in Denver*. Charleston, South Carolina: Arcadia Publishing, 2011.

National Park Service: *Denver Park and Parkway System (Theme Resource)*, Internet Document, accessed July, 2013.

National Park Service: *Denver Civic Center National Historic Landmark Nomination*, Internet Document, accessed July, 2013.

National Park Service. *How to Apply the National Register Criteria for Evaluation*. Internet document, accessed July, 2017.

National Park Service: National Register Bulletin 18: *How to Evaluate and Nominate Designed Landscapes*, 1994,

Revitalizing the Legacy of City Park. Denver: Denver Parks and Recreation, 2001.

APPENDIX:
RESULTS OF CITY OF DENVER FORESTRY DEPARTMENT
SURVEY OF CITY PARK GOLF COURSE TREES

This page intentionally left blank.

City Park Golf Course Tree Designation Plan with Condition, West Half.
Yellow boxes show trees that have died since the inventory.



City Park Golf Course Tree Designation Plan with Condition, East Half



CITY PARK GOLF COURSE TREE DESIGNATION, SPECIES AND CONDITION

Site ID	Species Common	Species Botanic	Diameter	Stems	Condition	Inventory Date	Structural Defect	Disease Pest
70960	Oak, Swamp White	<i>Quercus bicolor</i>	0 to 6	1	Fair	9/2/2014	basal wound	signs of stress
70961	Oak, Swamp White	<i>Quercus bicolor</i>	0 to 6	1	Fair	9/2/2014	other - see notes	foliage disorder
70962	Hawthorn, Cockspur	<i>Crataegus crus-galli</i>	0 to 6	1	Good	9/2/2014	trunk wounds	leaf scorch
70963	Oak, Swamp White	<i>Quercus bicolor</i>	0 to 6	1	Fair	9/2/2014	N/A	foliage disorder
70964	Locust, Honey	<i>Gleditsia triacanthos</i>	0 to 6	1	Fair	9/2/2014	trunk wounds	foliage disorder
70965	Locust, Honey	<i>Gleditsia triacanthos</i>	0 to 6	1	Fair	9/2/2014	circling / crossing roots	foliage disorder
70966	Oak, Swamp White	<i>Quercus bicolor</i>	0 to 6	1	Fair	9/2/2014	basal wound	foliage disorder
70967	Oak, Bur	<i>Quercus macrocarpa</i>	0 to 6	1	Good	9/2/2014	basal wound	N/A
70968	Serviceberry	<i>Amelanchier species</i>	0 to 6	1	Good	9/2/2014	N/A	signs of stress
70969	Ash, Green	<i>Fraxinus pennsylvanica</i>	6 to 12	1	Fair	9/2/2014	included bark	adelgids
70970	Ash, Green	<i>Fraxinus pennsylvanica</i>	6 to 12	1	Fair	9/2/2014	basal wound	adelgids
70971	Horsechestnut	<i>Aesculus hippocastanum</i>	0 to 6	1	Fair	9/2/2014	N/A	foliage disorder
70972	Ash, Green	<i>Fraxinus pennsylvanica</i>	6 to 12	1	Fair	9/2/2014	fair structure	foliage disorder
70973	Horsechestnut	<i>Aesculus hippocastanum</i>	0 to 6	1	Fair	9/2/2014	basal wound	foliage disorder
70974	Ash, Green	<i>Fraxinus pennsylvanica</i>	6 to 12	1	Fair	9/2/2014	other - see notes	borers
70975	Linden, American	<i>Tilia americana</i>	12 to 18	3	Fair	9/2/2014	included bark	foliage disorder
70976	Stump	<i>Stump</i>	24 to 30	1	N/A			
70977	Ash, White	<i>Fraxinus americana</i>	6 to 12	1	Fair	9/2/2014	dead trunk tissue	borers
70978	Linden, Littleleaf	<i>Tilia cordata</i>	0 to 6	1	Fair	9/2/2014	included bark	signs of stress
70979	Maple, freeman	<i>Acer x freemanii</i>	6 to 12	1	Fair	9/2/2014	included bark	foliage disorder
70980	Plum, Flowering	<i>Prunus cerasifera</i>	0 to 6	1	Fair	9/2/2014	trunk wounds	signs of stress
70981	Ash, Green	<i>Fraxinus pennsylvanica</i>	24 to 30	1	Fair	9/2/2014	previous failure	foliage disorder
70982	Ash, Green	<i>Fraxinus pennsylvanica</i>	18 to 24	1	Poor	9/2/2014	dead trunk tissue	crown dieback
70983	Ash, Green	<i>Fraxinus pennsylvanica</i>	18 to 24	1	Fair	9/2/2014	stress epicormics	foliage disorder
70984	Pine, Austrian	<i>Pinus nigra</i>	6 to 12	1	Fair	9/2/2014	bent bole	other - see notes
70985	Pine, Austrian	<i>Pinus nigra</i>	6 to 12	1	Good	9/2/2014	bow / sweep	other - see notes
70986	Linden, Littleleaf	<i>Tilia cordata</i>	6 to 12	1	Fair	9/2/2014	included bark	foliage disorder

Site ID	Species Common	Species Botanic	Diameter	Stems	Condition	Inventory Date	Structural Defect	Disease Pest
70987	Linden, Littleleaf	<i>Tilia cordata</i>	6 to 12	1	Fair	9/2/2014	multiple attachments	foliage disorder
70988	Stump	<i>Stump</i>	42 to 48	0	N/A			
70989	Cottonwood, Plains	<i>Populus sargentii</i>	42 to 48	1	Poor	9/2/2014	Large Limbs/scaffold defect	crown dieback
70990	Cottonwood, Plains	<i>Populus sargentii</i>	48 +	1	Poor	9/2/2014	dead trunk tissue	fruiting bodies
70991	Linden, Littleleaf	<i>Tilia cordata</i>	6 to 12	1	Good	9/2/2014	N/A	foliage disorder
70992	Ash, White	<i>Fraxinus americana</i>	6 to 12	1	Fair	9/2/2014	N/A	borers
70993	Ash, White	<i>Fraxinus americana</i>	6 to 12	1	Fair	9/2/2014	trunk wounds	borers
70994	Ash, Green	<i>Fraxinus pennsylvanica</i>	6 to 12	1	Fair	9/2/2014	stress epicormics	foliage disorder
70995	Ash, Green	<i>Fraxinus pennsylvanica</i>	6 to 12	1	Fair	9/2/2014	included bark	foliage disorder
70996	Hawthorn, Cockspur	<i>Crataegus crus-galli</i>	0 to 6	1	Good	9/2/2014	N/A	leaf scorch
70997	Hawthorn, Cockspur	<i>Crataegus crus-galli</i>	0 to 6	1	Good	9/2/2014	N/A	N/A
70998	Lilac, Japanese Tree	<i>Syringa reticulata</i>	0 to 6	1	Fair	9/2/2014	N/A	foliage disorder
70999	Tree of heaven	<i>Ailanthus altissima</i>	24 to 30	1	Good	9/2/2014	deadwood	N/A
71000	Stump	<i>Stump</i>	24 to 30	0	N/A			
71001	Crabapple, Flowering	<i>Malus sylvestris</i>	0 to 6	1	Good	9/2/2014	N/A	N/A
71002	Oak, Swamp White	<i>Quercus bicolor</i>	0 to 6	1	Fair	9/2/2014	lost main leader	foliage disorder
71003	Hawthorn, Cockspur	<i>Crataegus crus-galli</i>	0 to 6	1	Good	9/2/2014	N/A	leaf scorch
71004	Hawthorn, Cockspur	<i>Crataegus crus-galli</i>	0 to 6	1	Good	9/2/2014	N/A	leaf scorch
71005	Vacant Site	<i>Vacant Site</i>	0	0	N/A			
71006	Locust, Honey	<i>Gleditsia triacanthos</i>	0 to 6	1	Good	9/2/2014	N/A	N/A
71007	Vacant Site	<i>Vacant Site</i>	0	0	N/A			
71008	Hawthorn, Cockspur	<i>Crataegus crus-galli</i>	0 to 6	1	Good	9/2/2014	crowded by larger tree	leaf scorch
71009	Vacant Site	<i>Vacant Site</i>	0	0	N/A			
71010	Pine, Austrian	<i>Pinus nigra</i>	18 to 24	1	Fair	9/2/2014	ivy / vines	needle necrosis
71011	Spruce, Blue	<i>Picea pungens</i>	6 to 12	1	Fair	9/2/2014	bent bole	adelgids
71012	Spruce, Blue	<i>Picea pungens</i>	0 to 6	1	Dead			

Site ID	Species Common	Species Botanic	Diameter	Stems	Condition	Inventory Date	Structural Defect	Disease Pest
71013	Spruce, Blue	<i>Picea pungens</i>	6 to 12	1	Fair	9/2/2014	crowded by larger tree	other - see notes
71014	Locust, Honey	<i>Gleditsia triacanthos</i>	24 to 30	1	Fair	9/2/2014	loose cracked bark	other - see notes
71015	Spruce, Blue	<i>Picea pungens</i>	6 to 12	1	Poor	9/2/2014	topped	other - see notes
71016	Pine, Scotch	<i>Pinus sylvestris</i>	12 to 18	1	Good	9/2/2014	basal wound	N/A
71017	Locust, Honey	<i>Gleditsia triacanthos</i>	0 to 6	1	Fair	9/2/2014	trunk wounds	foliage disorder
71018	Maple, Silver	<i>Acer saccharinum</i>	18 to 24	1	Very Poor	9/2/2014	dead leaders	foliage disorder
71019	Hackberry, Northern	<i>Celtis occidentalis</i>	0 to 6	1	Poor	9/2/2014	bow / sweep	foliage disorder
71020	Pine, Austrian	<i>Pinus nigra</i>	30 to 36	1	Fair	9/2/2014	fair structure	other - see notes
71021	Oak, Swamp White	<i>Quercus bicolor</i>	0 to 6	1	Fair	9/2/2014	trunk wounds	foliage disorder
71022	Oak, Swamp White	<i>Quercus bicolor</i>	0 to 6	1	Fair	9/2/2014	N/A	foliage disorder
71023	Crabapple, Flowering	<i>Malus sylvestris</i>	0 to 6	1	Fair	9/2/2014	N/A	foliage disorder
71024	Oak, Bur	<i>Quercus macrocarpa</i>	0 to 6	1	Fair	9/2/2014	N/A	foliage disorder
71025	Hawthorn, Cockspur	<i>Crataegus crus-galli</i>	0 to 6	1	Good	9/2/2014	N/A	leaf scorch
71026	Horsechestnut	<i>Aesculus hippocastanum</i>	0 to 6	1	Very Poor	9/2/2014	serious decline	foliage disorder
71027	Hawthorn, Cockspur	<i>Crataegus crus-galli</i>	0 to 6	1	Fair	9/2/2014	N/A	thin canopy
71028	Stump	<i>Stump</i>	0 to 6	1	N/A			
71029	Locust, Honey	<i>Gleditsia triacanthos</i>	0 to 6	1	Fair	9/2/2014	trunk wounds	foliage disorder
71030	Oak, English	<i>Quercus robur</i>	0 to 6	1	Fair	9/2/2014	trunk wounds	signs of stress
71031	Hackberry, Northern	<i>Celtis occidentalis</i>	12 to 18	1	Fair	9/2/2014	basal wound	foliage disorder
71032	Hackberry, Northern	<i>Celtis occidentalis</i>	12 to 18	1	Fair	9/2/2014	basal wound	foliage disorder
71033	Hawthorn, Cockspur	<i>Crataegus crus-galli</i>	0 to 6	1	Good	9/2/2014	N/A	leaf scorch
71034	Oak, English	<i>Quercus robur</i>	0 to 6	1	Fair	9/2/2014	basal wound	signs of stress
71035	Locust, Honey	<i>Gleditsia triacanthos</i>	24 to 30	1	Fair	9/2/2014	stress epicormics	foliage disorder
71036	Hackberry, Northern	<i>Celtis occidentalis</i>	0 to 6	1	Poor	9/2/2014	other - see notes	foliage disorder
71037	Plane, London	<i>Platanus x acerifolia</i>	0 to 6	1	Poor	9/2/2014	trunk wounds	crown dieback
71038	Lilac, Japanese Tree	<i>Syringa reticulata</i>	0 to 6	1	Fair	9/2/2014	tipped	crown dieback
71039	Lilac, Japanese Tree	<i>Syringa reticulata</i>	0 to 6	1	Good	9/2/2014	N/A	signs of stress

Site ID	Species Common	Species Botanic	Diameter	Stems	Condition	Inventory Date	Structural Defect	Disease Pest
71040	Lilac, Japanese Tree	<i>Syringa reticulata</i>	0 to 6	1	Good	9/2/2014	N/A	signs of stress
71041	Sugarberry	<i>Celtis laevigata</i>	0 to 6	1	Fair	9/2/2014	stress epicormics	foliage disorder
71042	Plane, London	<i>Platanus x acerifolia</i>	0 to 6	1	Poor	9/2/2014	trunk wounds	crown dieback
71043	Locust, Honey	<i>Gleditsia triacanthos</i>	24 to 30	1	Fair	9/2/2014	deadwood	foliage disorder
71044	Pine, Scotch	<i>Pinus sylvestris</i>	24 to 30	1	Fair	9/2/2014	Co-dominants	other - see notes
71045	Horsechestnut	<i>Aesculus hippocastanum</i>	0 to 6	1	Poor	9/2/2014	crowded by larger tree	foliage disorder
71046	Pine, Scotch	<i>Pinus sylvestris</i>	18 to 24	1	Fair	9/2/2014	unbalanced crown	other - see notes
71047	Pine, Austrian	<i>Pinus nigra</i>	18 to 24	1	Fair	9/2/2014	N/A	other - see notes
71048	Cedar, Northern White	<i>Thuja occidentalis</i>	24 to 30	1	Good	9/2/2014	previous failure	N/A
71049	Coffeetree, Kentucky	<i>Gymnocladus dioicus</i>	0 to 6	1	Good	9/2/2014	N/A	signs of stress
71050	Vacant Site	<i>Vacant Site</i>	0	0	N/A			
71051	Pine, Pinyon	<i>Pinus edulis</i>	12 to 18	1	Fair	9/2/2014	dead trunk tissue	N/A
71052	Vacant Site	<i>Vacant Site</i>	0	0	N/A			
71053	Plane, London	<i>Platanus x acerifolia</i>	0 to 6	1	Fair	9/2/2014	N/A	other - see notes
71054	Maple, Amur	<i>Acer ginnala</i>	0 to 6	1	Fair	9/2/2014	basal wound	foliage disorder
71055	Plane, London	<i>Platanus x acerifolia</i>	0 to 6	1	Poor	9/2/2014	unbalanced crown	crown dieback
71056	Hackberry, Northern	<i>Celtis occidentalis</i>	0 to 6	1	Fair	9/2/2014	N/A	foliage disorder
71057	Oak, Swamp White	<i>Quercus bicolor</i>	0 to 6	1	Poor	9/2/2014	basal wound	foliage disorder
71058	Oak, Bur	<i>Quercus macrocarpa</i>	0 to 6	1	Fair	9/2/2014	N/A	foliage disorder
71059	Oak, Swamp White	<i>Quercus bicolor</i>	0 to 6	1	Fair	9/2/2014	basal wound	foliage disorder
71060	Maple, Silver	<i>Acer saccharinum</i>	12 to 18	1	Poor	9/2/2014	previous failure	foliage disorder
71061	Pine, Scotch	<i>Pinus sylvestris</i>	18 to 24	1	Good	9/2/2014	dead root tissue	N/A
71062	Stump	<i>Stump</i>	0 to 6	1	N/A	stump sprouts		
71063	Locust, Honey	<i>Gleditsia triacanthos</i>	0 to 6	1	Fair	9/2/2014	trunk wounds	crown dieback
71064	Locust, Honey	<i>Gleditsia triacanthos</i>	0 to 6	1	Fair	9/2/2014	trunk wounds	signs of stress

Site ID	Species Common	Species Botanic	Diameter	Stems	Condition	Inventory Date	Structural Defect	Disease Pest
71065	Maple, Silver	<i>Acer saccharinum</i>	18 to 24	1	Poor	9/2/2014	deadwood	crown dieback
71066	Locust, Honey	<i>Gleditsia triacanthos</i>	0 to 6	1	Fair	9/2/2014	basal wound	foliage disorder
71067	Locust, Honey	<i>Gleditsia triacanthos</i>	18 to 24	1	Fair	9/2/2014	deadwood	foliage disorder
71068	Crabapple, Flowering	<i>Malus sylvestris</i>	0 to 6	1	Good	9/2/2014	basal wound	N/A
71069	Crabapple, Flowering	<i>Malus sylvestris</i>	0 to 6	1	Good	9/2/2014	trunk wounds	N/A
71070	Crabapple, Flowering	<i>Malus sylvestris</i>	0 to 6	1	Fair	9/2/2014	trunk wounds	leaf scorch
71071	Locust, Honey	<i>Gleditsia triacanthos</i>	24 to 30	1	Fair	9/2/2014	deadwood	foliage disorder
71072	Vacant Site	<i>Vacant Site</i>	0	0	N/A			
71073	Hawthorn, Cockspur	<i>Crataegus crus-galli</i>	0 to 6	1	Fair	9/2/2014	trunk wounds	thin canopy
71074	Locust, Honey	<i>Gleditsia triacanthos</i>	18 to 24	1	Fair	9/2/2014	deadwood	foliage disorder
71075	Crabapple, Flowering	<i>Malus sylvestris</i>	0 to 6	1	Fair	9/2/2014	basal wound	signs of stress
71076	Locust, Honey	<i>Gleditsia triacanthos</i>	12 to 18	1	Fair	9/2/2014	deadwood	foliage disorder
71077	Stump	<i>Stump</i>	0 to 6	1	N/A			
71078	Vacant Site	<i>Vacant Site</i>	0	0	N/A			
71079	Oak, Swamp White	<i>Quercus bicolor</i>	0 to 6	1	Fair	9/2/2014	trunk wounds	signs of stress
71080	Vacant Site	<i>Vacant Site</i>	0	0	N/A			
71081	Locust, Honey	<i>Gleditsia triacanthos</i>	18 to 24	1	Fair	9/2/2014	previous failure	foliage disorder
71082	Vacant Site	<i>Vacant Site</i>	0	0	N/A			
71083	Cedar, Northern White	<i>Thuja occidentalis</i>	18 to 24	1	Poor	9/2/2014	lost main leader	needle necrosis
71084	Locust, Honey	<i>Gleditsia triacanthos</i>	24 to 30	1	Fair	9/2/2014	deadwood	foliage disorder
71085	Stump	<i>Stump</i>	0 to 6	1	N/A			
71086	Vacant Site	<i>Vacant Site</i>	0	0	N/A			
71087	Vacant Site	<i>Vacant Site</i>	0	0	N/A			
71088	Ash, Green	<i>Fraxinus pennsylvanica</i>	6 to 12	2	Poor	9/2/2014	basal decay	foliage disorder
71089	Cedar, Northern White	<i>Thuja occidentalis</i>	24 to 30	1	Good	9/2/2014	crowded by larger tree	N/A
71090	Cottonwood, Lanceleaf	<i>Populus x acuminata</i>	48 +	1	Poor	9/2/2014	dead trunk tissue	crown dieback

Site ID	Species Common	Species Botanic	Diameter	Stems	Condition	Inventory Date	Structural Defect	Disease Pest
71091	Cedar, Northern White	<i>Thuja occidentalis</i>	12 to 18	1	Fair	9/2/2014	crowded by larger tree	thin canopy
71092	Cedar, Northern White	<i>Thuja occidentalis</i>	12 to 18	1	Fair	9/2/2014	crowded by larger tree	thin canopy
71093	Pine, Ponderosa	<i>Pinus ponderosa</i>	18 to 24	1	Fair	9/2/2014	crowded by larger tree	other - see notes
71094	Pine, Austrian	<i>Pinus nigra</i>	24 to 30	1	Fair	9/2/2014	fair structure	other - see notes
71095	Pine, Austrian	<i>Pinus nigra</i>	24 to 30	1	Fair	9/2/2014	bow / sweep	other - see notes
71096	Vacant Site	<i>Vacant Site</i>	0	0	N/A			
71097	Pine, Austrian	<i>Pinus nigra</i>	18 to 24	1	Fair	9/2/2014	fair structure	other - see notes
71098	Pine, Austrian	<i>Pinus nigra</i>	24 to 30	1	Fair	9/2/2014	N/A	other - see notes
71099	Pine, Austrian	<i>Pinus nigra</i>	12 to 18	5	Fair	9/2/2014	multiple attachments	other - see notes
71100	Maple, Silver	<i>Acer saccharinum</i>	18 to 24	1	Poor	9/2/2014	dead leaders	crown dieback
71101	Maple, Silver	<i>Acer saccharinum</i>	18 to 24	1	Fair	9/2/2014	hangers	foliage disorder
71102	Locust, Honey	<i>Gleditsia triacanthos</i>	18 to 24	1	Fair	9/2/2014	deadwood	foliage disorder
71103	Stump	<i>Stump</i>	0 to 6	1	N/A			
71104	Horsechestnut	<i>Aesculus hippocastanum</i>	0 to 6	1	Very Poor	9/2/2014	serious decline	other - see notes
71105	Pine, Austrian	<i>Pinus nigra</i>	36 to 42	1	Fair	9/2/2014	Co-dominants	other - see notes
71106	Locust, Honey	<i>Gleditsia triacanthos</i>	24 to 30	1	Fair	9/2/2014	stress epicormics	foliage disorder
71107	Maple, Silver	<i>Acer saccharinum</i>	30 to 36	1	Poor	9/2/2014	lost main leader	foliage disorder
71108	Hawthorn	<i>Crataegus species</i>	0 to 6	1	Fair	9/2/2014	trunk wounds	leaf scorch
71109	Hawthorn	<i>Crataegus species</i>	0 to 6	1	Fair	9/2/2014	trunk wounds	leaf scorch
71110	Hawthorn	<i>Crataegus species</i>	0 to 6	1	Fair	9/2/2014	leaning	leaf scorch
71111	Vacant Site	<i>Vacant Site</i>	0	0	N/A			
71112	Vacant Site	<i>Vacant Site</i>	0	0	N/A			
71113	Oak, English	<i>Quercus robur</i>	0 to 6	1	Fair	9/2/2014	trunk wounds	signs of stress
71114	Cottonwood, Narrowleaf	<i>Populus angustifolia</i>	0 to 6	1	Poor	9/2/2014	trunk wounds	signs of stress
71115	Vacant Site	<i>Vacant Site</i>	0	0	N/A			
71116	Stump	<i>Stump</i>	0 to 6	1	N/A			

Site ID	Species Common	Species Botanic	Diameter	Stems	Condition	Inventory Date	Structural Defect	Disease Pest
71117	Oak, Bur	<i>Quercus macrocarpa</i>	0 to 6	1	Fair	9/2/2014	trunk wounds	foliage disorder
71118	Hackberry, Northern	<i>Celtis occidentalis</i>	24 to 30	1	Fair	9/2/2014	in failure	foliage disorder
71119	Linden, Littleleaf	<i>Tilia cordata</i>	12 to 18	1	Fair	9/2/2014	bow / sweep	foliage disorder
71120	Linden, Littleleaf	<i>Tilia cordata</i>	6 to 12	1	Poor	9/2/2014	other - see notes	foliage disorder
71121	Cottonwood, Narrowleaf	<i>Populus angustifolia</i>	6 to 12	1	Fair	9/2/2014	N/A	foliage disorder
71122	Vacant Site	<i>Vacant Site</i>	0	0	N/A			
71123	Crabapple, Flowering	<i>Malus sylvestris</i>	0 to 6	1	Fair	9/2/2014	trunk wounds	signs of stress
71124	Locust, Honey	<i>Gleditsia triacanthos</i>	18 to 24	1	Fair	9/2/2014	deadwood	foliage disorder
71125	Crabapple, Flowering	<i>Malus sylvestris</i>	0 to 6	1	Fair	9/2/2014	dead trunk tissue	signs of stress
71126	Locust, Honey	<i>Gleditsia triacanthos</i>	0 to 6	1	Poor	9/2/2014	dead trunk tissue	sunscald
71127	Stump	<i>Stump</i>	0 to 6	1	N/A			
71128	Linden, American	<i>Tilia americana</i>	12 to 18	1	Poor	9/2/2014	trunk wounds	foliage disorder
71129	Pine, Scotch	<i>Pinus sylvestris</i>	24 to 30	1	Fair	9/2/2014	N/A	other - see notes
71130	Pine, Ponderosa	<i>Pinus ponderosa</i>	18 to 24	1	Good	9/2/2014	deadwood	other - see notes
71131	Pine, Ponderosa	<i>Pinus ponderosa</i>	24 to 30	1	Fair	9/2/2014	included bark	other - see notes
71132	Pine, Ponderosa	<i>Pinus ponderosa</i>	18 to 24	1	Fair	9/2/2014	deadwood	other - see notes
71133	Spruce, Blue	<i>Picea pungens</i>	18 to 24	1	Fair	9/2/2014	bow / sweep	other - see notes
71134	Vacant Site	<i>Vacant Site</i>	0	0	N/A			
71135	Vacant Site	<i>Vacant Site</i>	0	0	N/A			
71136	Vacant Site	<i>Vacant Site</i>	0	0	N/A			
71137	Vacant Site	<i>Vacant Site</i>	0	0	N/A			
71138	Hackberry, Northern	<i>Celtis occidentalis</i>	0 to 6	1	Poor	9/2/2014	trunk wounds	foliage disorder
71139	Vacant Site	<i>Vacant Site</i>	0	0	N/A			
71140	Elm, American	<i>Ulmus americana</i>	36 to 42	1	Fair	9/2/2014	previous failure	signs of stress
71141	Vacant Site	<i>Vacant Site</i>	0	0	N/A			
71142	Elm, American	<i>Ulmus americana</i>	30 to 36	1	Poor	9/2/2014	previous failure	signs of stress
71143	Oak, Swamp White	<i>Quercus bicolor</i>	0 to 6	1	Fair	9/2/2014	basal wound	foliage disorder
71144	Pine, Scotch	<i>Pinus sylvestris</i>	12 to 18	1	Good	9/2/2014	in failure	other - see notes

Site ID	Species Common	Species Botanic	Diameter	Stems	Condition	Inventory Date	Structural Defect	Disease Pest
71145	Hawthorn	<i>Crataegus species</i>	0 to 6	1	Good	9/2/2014	N/A	thin canopy
71146	Cottonwood, Narrowleaf	<i>Populus angustifolia</i>	6 to 12	1	Fair	9/2/2014	fusing limbs	foliage disorder
71147	Maple, Silver	<i>Acer saccharinum</i>	24 to 30	1	Fair	9/2/2014	deadwood	foliage disorder
71148	Hawthorn	<i>Crataegus species</i>	0 to 6	1	Fair	9/2/2014	dead trunk tissue	thin canopy
71149	Maple, Silver	<i>Acer saccharinum</i>	12 to 18	1	Very Poor	9/2/2014	dead leaders	foliage disorder
71150	Maple, Silver	<i>Acer saccharinum</i>	30 to 36	1	Poor	9/2/2014	deadwood	foliage disorder
71151	Maple, Silver	<i>Acer saccharinum</i>	30 to 36	1	Poor	9/2/2014	dead leaders	crown dieback
71152	Ginkgo	<i>Ginkgo biloba</i>	0 to 6	1	Very Poor	9/2/2014	other - see notes	signs of stress
71153	Hawthorn	<i>Crataegus species</i>	0 to 6	3	Fair	9/2/2014	deadwood	crown dieback
71154	Tree of heaven	<i>Ailanthus altissima</i>	18 to 24	1	Fair	9/2/2014	N/A	frass
71155	Vacant Site	<i>Vacant Site</i>	0	0	N/A			
71156	Vacant Site	<i>Vacant Site</i>	0	0	N/A			
71157	Vacant Site	<i>Vacant Site</i>	0	0	N/A			
71158	Vacant Site	<i>Vacant Site</i>	0	0	N/A			
71159	Fir, Douglas	<i>Pseudotsuga menziesii</i>	18 to 24	1	Very Poor	9/2/2014	topped	needle necrosis
71160	Vacant Site	<i>Vacant Site</i>	0	0	N/A			
71161	Cottonwood, Narrowleaf	<i>Populus angustifolia</i>	6 to 12	1	Fair	9/2/2014	trunk wounds	foliage disorder
71162	Spruce, Blue	<i>Picea pungens</i>	24 to 30	1	Fair	9/2/2014	poor structure	signs of stress
71163	Vacant Site	<i>Vacant Site</i>	0	0	N/A			
71164	Pine, Scotch	<i>Pinus sylvestris</i>	12 to 18	1	Dead	9/2/2014	previous failure	scheduled for removal 8/1/17
71165	Pine, Scotch	<i>Pinus sylvestris</i>	12 to 18	1	Good	9/2/2014	N/A	N/A
71166	Crabapple, Flowering	<i>Malus sylvestris</i>	6 to 12	5	Fair	9/2/2014	stress epicormics	fire blight
71167	Cottonwood, Narrowleaf	<i>Populus angustifolia</i>	0 to 6	1	Fair	9/2/2014	basal wound	foliage disorder
71168	Cottonwood, Narrowleaf	<i>Populus angustifolia</i>	0 to 6	1	Fair	9/2/2014	basal wound	foliage disorder
71169	Vacant Site	<i>Vacant Site</i>	0	0	N/A			

Site ID	Species Common	Species Botanic	Diameter	Stems	Condition	Inventory Date	Structural Defect	Disease Pest
71170	Cottonwood, Lanceleaf	<i>Populus x acuminata</i>	12 to 18	1	Fair	9/2/2014	N/A	foliage disorder
71171	Vacant Site	<i>Vacant Site</i>	0	0	N/A			
71172	Vacant Site	<i>Vacant Site</i>	0	0	N/A			
71173	Pine, Scotch	<i>Pinus sylvestris</i>	18 to 24	1	Fair	9/2/2014	N/A	other - see notes
71174	Crabapple, Flowering	<i>Malus sylvestris</i>	0 to 6	4	Fair	9/2/2014	basal wound	fire blight
71175	Crabapple, Flowering	<i>Malus sylvestris</i>	12 to 18	1	Poor	9/2/2014	basal wound	fire blight
71176	Crabapple, Flowering	<i>Malus sylvestris</i>	6 to 12	3	Fair	9/2/2014	stress epicormics	fire blight
71177	Crabapple, Flowering	<i>Malus sylvestris</i>	12 to 18	1	Fair	9/2/2014	included bark	fire blight
71178	Oak, Bur	<i>Quercus macrocarpa</i>	6 to 12	1	Fair	9/2/2014	basal wound	foliage disorder
71179	Cottonwood, Lanceleaf	<i>Populus x acuminata</i>	12 to 18	1	Fair	9/2/2014	included bark	foliage disorder
71180	Cottonwood, Lanceleaf	<i>Populus x acuminata</i>	12 to 18	1	Fair	9/2/2014	trunk wounds	foliage disorder
71181	Horsechestnut	<i>Aesculus hippocastanum</i>	6 to 12	1	Fair	9/2/2014	dead trunk tissue	foliage disorder
71182	Oak, Bur	<i>Quercus macrocarpa</i>	6 to 12	1	Fair	9/2/2014	mechanical damage	foliage disorder
71183	Horsechestnut	<i>Aesculus hippocastanum</i>	0 to 6	1	Fair	9/2/2014	basal wound	foliage disorder
71184	Oak, Bur	<i>Quercus macrocarpa</i>	12 to 18	1	Fair	9/2/2014	N/A	foliage disorder
71185	Pine, Scotch	<i>Pinus sylvestris</i>	12 to 18	1	Poor	9/2/2014	basal wound	foliage disorder
71186	Cottonwood, Lanceleaf	<i>Populus x acuminata</i>	6 to 12	1	Fair	9/2/2014	N/A	foliage disorder
71187	Pine, Ponderosa	<i>Pinus ponderosa</i>	12 to 18	1	Fair	9/2/2014	basal wound	foliage disorder
71188	Pine, Ponderosa	<i>Pinus ponderosa</i>	12 to 18	1	Fair	9/2/2014	N/A	other - see notes
71189	Spruce, Blue	<i>Picea pungens</i>	18 to 24	1	Poor	9/2/2014	unbalanced crown	needle necrosis
71190	Maple, Silver	<i>Acer saccharinum</i>	18 to 24	1	Dead	9/2/2014	Co-dominants	scheduled for removal 8/1/17
71191	Ash, Green	<i>Fraxinus pennsylvanica</i>	6 to 12	1	Fair	9/2/2014	basal wound	foliage disorder
71192	Vacant Site	<i>Vacant Site</i>	0	0	N/A			
71193	Oak, Bur	<i>Quercus macrocarpa</i>	6 to 12	1	Fair	9/2/2014	other - see notes	foliage disorder

Site ID	Species Common	Species Botanic	Diameter	Stems	Condition	Inventory Date	Structural Defect	Disease Pest
71194	Oak, Bur	<i>Quercus macrocarpa</i>	6 to 12	1	Fair	9/2/2014	N/A	foliage disorder
71195	Crabapple, Flowering	<i>Malus sylvestris</i>	0 to 6	12	Fair	9/2/2014	other - see notes	fire blight
71196	Crabapple, Flowering	<i>Malus sylvestris</i>	0 to 6	5	Fair	9/2/2014	basal wound	fire blight
71197	Crabapple, Flowering	<i>Malus sylvestris</i>	12 to 18	1	Fair	9/2/2014	included bark	fire blight
71198	Cottonwood, Lanceleaf	<i>Populus x acuminata</i>	12 to 18	1	Fair	9/2/2014	included bark	N/A
71199	Vacant Site	<i>Vacant Site</i>	0	0	N/A			
71200	Vacant Site	<i>Vacant Site</i>	0	0	N/A			
71201	Vacant Site	<i>Vacant Site</i>	0	0	N/A			
71202	Linden, American	<i>Tilia americana</i>	6 to 12	1	Very Poor	9/2/2014	unbalanced crown	foliage disorder
71203	Ash, Green	<i>Fraxinus pennsylvanica</i>	12 to 18	2	Fair	9/2/2014	trunk wounds	adelgids
71204	Lilac	<i>Syringa species</i>	0 to 6	2	Fair	9/2/2014	N/A	signs of stress
71205	Catalpa, Western	<i>Catalpa speciosa</i>	0 to 6	1	Dead			
71206	Pine, Limber	<i>Pinus flexilis</i>	12 to 18	1	Fair	9/2/2014	previous failure	other - see notes
71207	Pine, Limber	<i>Pinus flexilis</i>	12 to 18	1	Dead	9/2/2014	dead leaders	scheduled for removal 8/1/17
71208	Cottonwood, Lanceleaf	<i>Populus x acuminata</i>	12 to 18	1	Fair	9/2/2014	basal wound	foliage disorder
71209	Oak, Bur	<i>Quercus macrocarpa</i>	6 to 12	1	Fair	9/2/2014	N/A	foliage disorder
71210	Cottonwood, Lanceleaf	<i>Populus x acuminata</i>	6 to 12	1	Fair	9/2/2014	trunk wounds	foliage disorder
71211	Buckeye, Ohio	<i>Aesculus glabra</i>	6 to 12	1	Fair	9/2/2014	basal wound	foliage disorder
71212	Cottonwood, Lanceleaf	<i>Populus x acuminata</i>	24 to 30	1	Fair	9/2/2014	Large Limbs/scaffold defect	signs of stress
71213	Pine, Pinyon	<i>Pinus edulis</i>	12 to 18	1	Fair	9/2/2014	trunk wounds	pitch canker
71214	Pine, Pinyon	<i>Pinus edulis</i>	18 to 24	1	Good	9/2/2014	previous failure	N/A
71215	Pine, Pinyon	<i>Pinus edulis</i>	12 to 18	1	Good	9/2/2014	N/A	N/A
71216	Hackberry, Northern	<i>Celtis occidentalis</i>	12 to 18	1	Fair	9/2/2014	N/A	foliage disorder
71217	Spruce, Blue	<i>Picea pungens</i>	12 to 18	1	Fair	9/2/2014	leaning	needle necrosis

Site ID	Species Common	Species Botanic	Diameter	Stems	Condition	Inventory Date	Structural Defect	Disease Pest
71218	Maple, Silver	<i>Acer saccharinum</i>	24 to 30	1	Fair	9/2/2014	deadwood	foliage disorder
71219	Sugarberry	<i>Celtis laevigata</i>	12 to 18	1	Fair	9/2/2014	Large Limbs/scaffold defect	foliage disorder
71220	Spruce, Blue	<i>Picea pungens</i>	18 to 24	1	Fair	9/2/2014	bow / sweep	signs of stress
71221	Pine, Austrian	<i>Pinus nigra</i>	12 to 18	1	Good	9/2/2014	bow / sweep	other - see notes
71222	Pine, Austrian	<i>Pinus nigra</i>	6 to 12	1	Fair	9/2/2014	bow / sweep	foliage disorder
71223	Pine, Austrian	<i>Pinus nigra</i>	6 to 12	1	Poor	9/2/2014	lost main leader	other - see notes
71224	Pine, Austrian	<i>Pinus nigra</i>	6 to 12	1	Poor	9/2/2014	N/A	other - see notes
71225	Pine, Austrian	<i>Pinus nigra</i>	12 to 18	1	Fair	9/2/2014	N/A	other - see notes
71226	Pine, Austrian	<i>Pinus nigra</i>	6 to 12	1	Fair	9/2/2014	bow / sweep	other - see notes
71227	Pine, Austrian	<i>Pinus nigra</i>	6 to 12	1	Fair	9/2/2014	leaning	other - see notes
71228	Pine, Austrian	<i>Pinus nigra</i>	6 to 12	1	Good	9/2/2014	N/A	N/A
71229	Pine, Austrian	<i>Pinus nigra</i>	12 to 18	1	Fair	9/2/2014	circling / crossing roots	other - see notes
71230	Ash, Green	<i>Fraxinus pennsylvanica</i>	18 to 24	1	Fair	9/3/2014	deadwood	signs of stress
71231	Ash, Green	<i>Fraxinus pennsylvanica</i>	24 to 30	1	Fair	9/3/2014	leaning - corrected	foliage disorder
71232	Ash, Green	<i>Fraxinus pennsylvanica</i>	18 to 24	1	Fair	9/3/2014	Large Limbs/scaffold defect	signs of stress
71233	Ash, Green	<i>Fraxinus pennsylvanica</i>	18 to 24	1	Fair	9/3/2014	previous failure	other - see notes
71234	Ash, Green	<i>Fraxinus pennsylvanica</i>	24 to 30	1	Fair	9/3/2014	in failure	signs of stress
71235	Maple, Silver	<i>Acer saccharinum</i>	30 to 36	1	Poor	9/3/2014	dead leaders	foliage disorder
71236	Elm, American	<i>Ulmus americana</i>	30 to 36	1	Poor	9/3/2014	cavity	signs of stress
71237	Vacant Site	<i>Vacant Site</i>	0	0	N/A			
71238	Pine, Scotch	<i>Pinus sylvestris</i>	18 to 24	1	Good	9/3/2014	bow / sweep	other - see notes
71239	Pine, Scotch	<i>Pinus sylvestris</i>	12 to 18	1	Fair	9/3/2014	N/A	other - see notes
71240	Pine, Pinyon	<i>Pinus edulis</i>	12 to 18	1	Good	9/3/2014	N/A	signs of stress
71241	Pine, Scotch	<i>Pinus sylvestris</i>	12 to 18	1	Good	9/3/2014	deadwood	sapsucker damage

Site ID	Species Common	Species Botanic	Diameter	Stems	Condition	Inventory Date	Structural Defect	Disease Pest
71242	Pine, Scotch	<i>Pinus sylvestris</i>	12 to 18	1	Good	9/3/2014	fusing limbs	other - see notes
71243	Cottonwood, Plains	<i>Populus sargentii</i>	18 to 24	1	Dead	9/3/2014	dead leaders	scheduled for removal 8/1/17
71244	Cottonwood, Plains	<i>Populus sargentii</i>	18 to 24	1	Fair	9/3/2014	deadwood	signs of stress
71245	Ash, Green	<i>Fraxinus pennsylvanica</i>	6 to 12	3	Fair	9/3/2014	trunk wounds	borers
71246	Cottonwood, Plains	<i>Populus sargentii</i>	24 to 30	1	Dead	9/3/2014	dead leaders	scheduled for removal 8/1/17
71247	Maple, Silver	<i>Acer saccharinum</i>	6 to 12	8	Poor	9/3/2014	dead leaders	foliage disorder
71248	Cottonwood, Plains	<i>Populus sargentii</i>	24 to 30	1	Fair	9/3/2014	other - see notes	signs of stress
71249	Ash, Green	<i>Fraxinus pennsylvanica</i>	12 to 18	2	Fair	9/3/2014	included bark	signs of stress
71250	Locust, Honey	<i>Gleditsia triacanthos</i>	24 to 30	1	Fair	9/3/2014	deadwood	foliage disorder
71251	Spruce, Blue	<i>Picea pungens</i>	18 to 24	1	Fair	9/3/2014	fair structure	other - see notes
71252	Pine, Austrian	<i>Pinus nigra</i>	18 to 24	1	Fair	9/3/2014	circling / crossing roots	other - see notes
71253	Pine, Austrian	<i>Pinus nigra</i>	18 to 24	1	Good	9/3/2014	N/A	other - see notes
71254	Spruce, Blue	<i>Picea pungens</i>	6 to 12	1	Good	9/3/2014	unbalanced crown	N/A
71255	Linden, American	<i>Tilia americana</i>	6 to 12	1	Fair	9/3/2014	N/A	foliage disorder
71256	Oak, Bur	<i>Quercus macrocarpa</i>	6 to 12	1	Fair	9/3/2014	N/A	foliage disorder
71257	Hackberry, Northern	<i>Celtis occidentalis</i>	18 to 24	1	Fair	9/3/2014	included bark	foliage disorder
71258	Pine, Scotch	<i>Pinus sylvestris</i>	12 to 18	1	Dead	9/3/2014	N/A	scheduled for removal 8/1/17
71259	Cottonwood, Lanceleaf	<i>Populus x acuminata</i>	18 to 24	2	Fair	9/3/2014	included bark	slime flux
71260	Vacant Site	<i>Vacant Site</i>	0	0	N/A			
71261	Stump	<i>Stump</i>	12 to 18	1	N/A	tall stump		
71262	Vacant Site	<i>Vacant Site</i>	0	0	N/A			
71263	Spruce, Blue	<i>Picea pungens</i>	18 to 24	1	Fair	9/3/2014	bow / sweep	other - see notes
71264	Vacant Site	<i>Vacant Site</i>	0	0	N/A			
71265	Locust, Honey	<i>Gleditsia triacanthos</i>	6 to 12	1	Fair	9/3/2014	N/A	foliage disorder

Site ID	Species Common	Species Botanic	Diameter	Stems	Condition	Inventory Date	Structural Defect	Disease Pest
71266	Spruce, Blue	<i>Picea pungens</i>	12 to 18	1	Fair	9/3/2014	bow / sweep	other - see notes
71267	Crabapple, Flowering	<i>Malus sylvestris</i>	6 to 12	1	Good	9/3/2014	N/A	signs of stress
71268	Pine, Austrian	<i>Pinus nigra</i>	24 to 30	1	Fair	9/3/2014	N/A	other - see notes
71269	Pine, Austrian	<i>Pinus nigra</i>	24 to 30	1	Good	9/3/2014	N/A	other - see notes
71270	Pine, Austrian	<i>Pinus nigra</i>	24 to 30	1	Poor	9/3/2014	circling / crossing roots	other - see notes
71271	Ash, Green	<i>Fraxinus pennsylvanica</i>	12 to 18	1	Fair	9/3/2014	fair structure	signs of stress
71272	Coffeetree, Kentucky	<i>Gymnocladus dioicus</i>	12 to 18	1	Fair	9/3/2014	basal wound	signs of stress
71273	Spruce, Blue	<i>Picea pungens</i>	18 to 24	1	Fair	9/3/2014	fair structure	signs of stress
71274	Cottonwood, Lanceleaf	<i>Populus x acuminata</i>	30 to 36	1	Fair	9/3/2014	deadwood	signs of stress
71275	Cottonwood, Plains	<i>Populus sargentii</i>	12 to 18	1	Good	9/3/2014	N/A	signs of stress
71276	Linden, American	<i>Tilia americana</i>	6 to 12	1	Fair	9/3/2014	included bark	foliage disorder
71277	Cottonwood, Lanceleaf	<i>Populus x acuminata</i>	0 to 6	1	Good	9/3/2014	N/A	foliage disorder
71278	Vacant Site	<i>Vacant Site</i>	0	0	N/A			
71279	Spruce, Blue	<i>Picea pungens</i>	12 to 18	1	Very Poor	9/3/2014	deadwood	needle necrosis
71280	Cottonwood, Narrowleaf	<i>Populus angustifolia</i>	0 to 6	1	Fair	9/3/2014	basal wound	foliage disorder
71281	Cottonwood, Lanceleaf	<i>Populus x acuminata</i>	12 to 18	1	Fair	9/3/2014	limb damage	foliage disorder
71282	Linden, American	<i>Tilia americana</i>	6 to 12	1	Fair	9/3/2014	dead trunk tissue	foliage disorder
71283	Elm, American	<i>Ulmus americana</i>	12 to 18	1	Poor	9/3/2014	deadwood	sooty mold
71284	Linden, American	<i>Tilia americana</i>	6 to 12	1	Fair	9/3/2014	N/A	foliage disorder
71285	Hackberry, Northern	<i>Celtis occidentalis</i>	12 to 18	1	Fair	9/3/2014	N/A	foliage disorder
71286	Elm, American	<i>Ulmus americana</i>	6 to 12	1	Poor	9/3/2014	deadwood	sooty mold
71287	Cottonwood, Narrowleaf	<i>Populus angustifolia</i>	0 to 6	1	Fair	9/3/2014	basal wound	foliage disorder
71288	Cottonwood, Lanceleaf	<i>Populus x acuminata</i>	12 to 18	1	Good	9/3/2014	N/A	foliage disorder
71289	Cottonwood, Lanceleaf	<i>Populus x acuminata</i>	6 to 12	1	Fair	9/3/2014	basal wound	foliage disorder

Site ID	Species Common	Species Botanic	Diameter	Stems	Condition	Inventory Date	Structural Defect	Disease Pest
71290	Linden, American	<i>Tilia americana</i>	6 to 12	1	Poor	9/3/2014	serious decline	foliage disorder
71291	Elm, American	<i>Ulmus americana</i>	30 to 36	1	Poor	9/3/2014	previous failure	fruiting bodies
71292	Ash, Green	<i>Fraxinus pennsylvanica</i>	6 to 12	1	Fair	9/3/2014	leaning	foliage disorder
71293	Vacant Site	<i>Vacant Site</i>	0	0	N/A			
71294	Elm, American	<i>Ulmus americana</i>	6 to 12	1	Poor	9/3/2014	trunk wounds	sooty mold
71295	Elm, American	<i>Ulmus americana</i>	6 to 12	1	Poor	9/3/2014	deadwood	sooty mold
71296	Cottonwood, Narrowleaf	<i>Populus angustifolia</i>	0 to 6	1	Poor	9/3/2014	basal wound	crown dieback
71297	Cottonwood, Narrowleaf	<i>Populus angustifolia</i>	0 to 6	1	Poor	9/3/2014	trunk wounds	foliage disorder
71298	Juniper, Rocky Mountain	<i>Juniperus scopulorum</i>	18 to 24	1	Fair	9/3/2014	included bark	N/A
71299	Juniper, Rocky Mountain	<i>Juniperus scopulorum</i>	18 to 24	1	Fair	9/3/2014	dead trunk tissue	N/A
71300	Juniper, Rocky Mountain	<i>Juniperus scopulorum</i>	18 to 24	1	Fair	9/3/2014	trunk decay	N/A
71301	Juniper, Rocky Mountain	<i>Juniperus scopulorum</i>	18 to 24	1	Fair	9/3/2014	bow / sweep	fruiting bodies
71302	Juniper, Rocky Mountain	<i>Juniperus scopulorum</i>	12 to 18	1	Good	9/3/2014	previous failure	N/A
71303	Cottonwood, Narrowleaf	<i>Populus angustifolia</i>	0 to 6	1	Fair	9/3/2014	trunk wounds	foliage disorder
71304	Cottonwood, Narrowleaf	<i>Populus angustifolia</i>	0 to 6	1	Fair	9/3/2014	lawnmower damage	foliage disorder
71305	Cottonwood, Narrowleaf	<i>Populus angustifolia</i>	0 to 6	1	Poor	9/3/2014	basal wound	foliage disorder
71306	Cottonwood, Lanceleaf	<i>Populus x acuminata</i>	42 to 48	1	Poor	9/3/2014	dead leaders	crown dieback
71307	Pine, Scotch	<i>Pinus sylvestris</i>	12 to 18	1	Good	9/3/2014	leaning	sapsucker damage
71308	Pine, Scotch	<i>Pinus sylvestris</i>	12 to 18	1	Dead	9/3/2014	N/A	scheduled for removal 8/1/17

Site ID	Species Common	Species Botanic	Diameter	Stems	Condition	Inventory Date	Structural Defect	Disease Pest
71309	Pine, Scotch	<i>Pinus sylvestris</i>	12 to 18	1	Dead	9/3/2014	bow / sweep	scheduled for removal 8/1/17
71310	Cottonwood, Narrowleaf	<i>Populus angustifolia</i>	6 to 12	1	Good	9/3/2014	N/A	foliage disorder
71311	Juniper, Rocky Mountain	<i>Juniperus scopulorum</i>	18 to 24	1	Fair	9/3/2014	previous failure	N/A
71312	Pine, Ponderosa	<i>Pinus ponderosa</i>	24 to 30	1	Fair	9/3/2014	leaning	other - see notes
71313	Juniper, One Seed	<i>Juniperus monosperma</i>	12 to 18	1	Very Poor	9/3/2014	serious decline	thin canopy
71314	Juniper, One Seed	<i>Juniperus monosperma</i>	18 to 24	1	Poor	9/3/2014	in failure	thin canopy
71315	Pine, Ponderosa	<i>Pinus ponderosa</i>	12 to 18	1	Fair	9/3/2014	unbalanced crown	other - see notes
71316	Juniper, One Seed	<i>Juniperus monosperma</i>	6 to 12	2	Fair	9/3/2014	hollow	N/A
71317	Juniper, One Seed	<i>Juniperus monosperma</i>	12 to 18	1	Fair	9/3/2014	topped	N/A
71318	Pine, Ponderosa	<i>Pinus ponderosa</i>	24 to 30	1	Fair	9/3/2014	bow / sweep	other - see notes
71319	Crabapple, Flowering	<i>Malus sylvestris</i>	0 to 6	5	Good	9/3/2014	included bark	fire blight
71320	Pine, Austrian	<i>Pinus nigra</i>	18 to 24	1	Fair	9/3/2014	N/A	other - see notes
71321	Pine, Ponderosa	<i>Pinus ponderosa</i>	12 to 18	1	Fair	9/3/2014	N/A	other - see notes
71322	Vacant Site	<i>Vacant Site</i>	0	0	N/A			
71323	Pine, Austrian	<i>Pinus nigra</i>	18 to 24	1	Fair	9/3/2014	N/A	other - see notes
71324	Juniper, One Seed	<i>Juniperus monosperma</i>	12 to 18	1	Fair	9/3/2014	unbalanced crown	N/A
71325	Cottonwood, Lanceleaf	<i>Populus x acuminata</i>	6 to 12	1	Fair	9/3/2014	N/A	foliage disorder
71326	Cottonwood, Lanceleaf	<i>Populus x acuminata</i>	12 to 18	1	Fair	9/3/2014	N/A	foliage disorder
71327	Cottonwood, Lanceleaf	<i>Populus x acuminata</i>	6 to 12	1	Fair	9/3/2014	N/A	foliage disorder
71328	Cottonwood, Narrowleaf	<i>Populus angustifolia</i>	0 to 6	1	Fair	9/3/2014	trunk wounds	foliage disorder
71329	Pine, Scotch	<i>Pinus sylvestris</i>	12 to 18	1	Fair	9/3/2014	Co-dominants	other - see notes
71330	Pine, Scotch	<i>Pinus sylvestris</i>	6 to 12	1	Fair	9/3/2014	fair structure	other - see notes
71331	Elm, American	<i>Ulmus americana</i>	6 to 12	1	Poor	9/3/2014	stress epicormics	foliage disorder

Site ID	Species Common	Species Botanic	Diameter	Stems	Condition	Inventory Date	Structural Defect	Disease Pest
71332	Pine, Austrian	<i>Pinus nigra</i>	18 to 24	1	Fair	9/3/2014	included bark	other - see notes
71333	Pine, Austrian	<i>Pinus nigra</i>	12 to 18	1	Fair	9/3/2014	fusing limbs	other - see notes
71334	Pine, Austrian	<i>Pinus nigra</i>	18 to 24	1	Fair	9/3/2014	bow / sweep	other - see notes
71335	Cottonwood, Plains	<i>Populus sargentii</i>	18 to 24	1	Good	9/3/2014	N/A	N/A
71336	Elm, American	<i>Ulmus americana</i>	6 to 12	1	Poor	9/3/2014	deadwood	foliage disorder
71337	Cottonwood, Lanceleaf	<i>Populus x acuminata</i>	30 to 36	1	Fair	9/3/2014	other - see notes	foliage disorder
71338	Cottonwood, Lanceleaf	<i>Populus x acuminata</i>	6 to 12	1	Good	9/3/2014	basal wound	N/A
71339	Cottonwood, Lanceleaf	<i>Populus x acuminata</i>	12 to 18	1	Fair	9/3/2014	circling / crossing roots	foliage disorder
71340	Pine, Austrian	<i>Pinus nigra</i>	18 to 24	1	Good	9/3/2014	N/A	N/A
71341	Hackberry, Northern	<i>Celtis occidentalis</i>	6 to 12	1	Fair	9/3/2014	basal wound	foliage disorder
71342	Pine, Austrian	<i>Pinus nigra</i>	18 to 24	1	Fair	9/3/2014	leaning - corrected	other - see notes
71343	Elm, American	<i>Ulmus americana</i>	6 to 12	1	Poor	9/3/2014	stunted foliage	sooty mold
71344	Locust, Honey	<i>Gleditsia triacanthos</i>	18 to 24	1	Fair	9/3/2014	deadwood	foliage disorder
71345	Locust, Honey	<i>Gleditsia triacanthos</i>	24 to 30	1	Fair	9/3/2014	previous failure	signs of stress
71346	Locust, Honey	<i>Gleditsia triacanthos</i>	24 to 30	1	Fair	9/3/2014	stress epicormics	signs of stress
71347	Elm, American	<i>Ulmus americana</i>	36 to 42	1	Fair	9/3/2014	Large Limbs/scaffold defect	foliage disorder
71348	Pine, Austrian	<i>Pinus nigra</i>	18 to 24	1	Fair	9/3/2014	fusing limbs	other - see notes
71349	Hackberry, Northern	<i>Celtis occidentalis</i>	12 to 18	1	Fair	9/3/2014	basal wound	foliage disorder
71350	Hackberry, Northern	<i>Celtis occidentalis</i>	6 to 12	1	Poor	9/3/2014	basal wound	foliage disorder
71351	Cottonwood, Lanceleaf	<i>Populus x acuminata</i>	18 to 24	1	Good	9/3/2014	circling / crossing roots	N/A
71352	Cottonwood, Lanceleaf	<i>Populus x acuminata</i>	18 to 24	1	Good	9/3/2014	included bark	N/A
71353	Cottonwood, Lanceleaf	<i>Populus x acuminata</i>	12 to 18	1	Good	9/3/2014	trunk wounds	N/A
71354	Elm, Field	<i>Ulmus carpinifolia</i>	36 to 42	1	Fair	9/3/2014	previous failure	signs of stress

Site ID	Species Common	Species Botanic	Diameter	Stems	Condition	Inventory Date	Structural Defect	Disease Pest
71355	Pine, Austrian	<i>Pinus nigra</i>	18 to 24	1	Good	9/3/2014	N/A	other - see notes
71356	Pine, Austrian	<i>Pinus nigra</i>	12 to 18	1	Fair	9/3/2014	fusing limbs	other - see notes
71357	Linden, American	<i>Tilia americana</i>	12 to 18	1	Fair	9/3/2014	fair structure	foliage disorder
71358	Linden, American	<i>Tilia americana</i>	12 to 18	1	Fair	9/3/2014	included bark	foliage disorder
71359	Pine, Ponderosa	<i>Pinus ponderosa</i>	24 to 30	1	Dead	9/3/2014	N/A	scheduled for removal 8/1/17
71360	Pine, Ponderosa	<i>Pinus ponderosa</i>	18 to 24	1	Fair	9/3/2014	bow / sweep	other - see notes
71361	Pine, Ponderosa	<i>Pinus ponderosa</i>	18 to 24	1	Fair	9/3/2014	N/A	other - see notes
71362	Pine, Ponderosa	<i>Pinus ponderosa</i>	18 to 24	1	Fair	9/3/2014	bent bole	other - see notes
71363	Pine, Ponderosa	<i>Pinus ponderosa</i>	18 to 24	1	Fair	9/3/2014	leaning	other - see notes
71364	Pine, Ponderosa	<i>Pinus ponderosa</i>	18 to 24	1	Fair	9/3/2014	topped	other - see notes
71365	Pine, Ponderosa	<i>Pinus ponderosa</i>	12 to 18	1	Fair	9/3/2014	fair structure	other - see notes
71366	Juniper, One Seed	<i>Juniperus monosperma</i>	12 to 18	1	Good	9/3/2014	leaning	signs of stress
71367	Vacant Site	<i>Vacant Site</i>	0	0	N/A			
71368	Pine, Scotch	<i>Pinus sylvestris</i>	12 to 18	1	Good	9/3/2014	N/A	other - see notes
71369	Pine, Scotch	<i>Pinus sylvestris</i>	12 to 18	1	Poor	9/3/2014	leaning	other - see notes
71370	Spruce, Blue	<i>Picea pungens</i>	18 to 24	1	Fair	9/3/2014	bow / sweep	other - see notes
71371	Linden, American	<i>Tilia americana</i>	12 to 18	1	Fair	9/3/2014	N/A	foliage disorder
71372	Hackberry, Northern	<i>Celtis occidentalis</i>	18 to 24	1	Fair	9/3/2014	deadwood	foliage disorder
71373	Hackberry, Northern	<i>Celtis occidentalis</i>	18 to 24	1	Fair	9/3/2014	crowded by larger tree	foliage disorder
71374	Hackberry, Northern	<i>Celtis occidentalis</i>	24 to 30	1	Fair	9/3/2014	stress epicormics	foliage disorder
71375	Hackberry, Northern	<i>Celtis occidentalis</i>	24 to 30	1	Fair	9/3/2014	stress epicormics	foliage disorder
71376	Locust, Honey	<i>Gleditsia triacanthos</i>	12 to 18	1	Poor	9/3/2014	dead leaders	foliage disorder
71377	Locust, Honey	<i>Gleditsia triacanthos</i>	18 to 24	1	Fair	9/3/2014	deadwood	foliage disorder
71378	Hawthorn	<i>Crataegus species</i>	12 to 18	1	Good	9/3/2014	N/A	fire blight
71379	Vacant Site	<i>Vacant Site</i>	0	0	N/A			
71380	Hawthorn	<i>Crataegus species</i>	6 to 12	1	Fair	9/3/2014	fusing limbs	signs of stress
71381	Ash, Green	<i>Fraxinus pennsylvanica</i>	24 to 30	1	Fair	9/3/2014	deadwood	foliage disorder

Site ID	Species Common	Species Botanic	Diameter	Stems	Condition	Inventory Date	Structural Defect	Disease Pest
71382	Pine, Austrian	<i>Pinus nigra</i>	12 to 18	1	Good	9/3/2014	bow / sweep	other - see notes
71383	Pine, Scotch	<i>Pinus sylvestris</i>	24 to 30	1	Fair	9/3/2014	included bark	other - see notes
71384	Pine, Scotch	<i>Pinus sylvestris</i>	12 to 18	1	Good	9/3/2014	basal wound	N/A
71385	Pine, Austrian	<i>Pinus nigra</i>	18 to 24	1	Fair	9/3/2014	N/A	other - see notes
71386	Pine, Scotch	<i>Pinus sylvestris</i>	12 to 18	1	Fair	9/3/2014	deadwood	other - see notes
71387	Vacant Site	<i>Vacant Site</i>	0	0	N/A			
71388	Pine, Scotch	<i>Pinus sylvestris</i>	12 to 18	1	Fair	9/3/2014	N/A	other - see notes
71389	Pine, Scotch	<i>Pinus sylvestris</i>	18 to 24	1	Fair	9/3/2014	other - see notes	other - see notes
71390	Pine, Scotch	<i>Pinus sylvestris</i>	12 to 18	1	Good	9/3/2014	N/A	sapsucker damage
71391	Hackberry, Northern	<i>Celtis occidentalis</i>	12 to 18	1	Fair	9/3/2014	stress epicormics	foliage disorder
71392	Pine, Scotch	<i>Pinus sylvestris</i>	0 to 6	1	Good	9/3/2014	crowded by larger tree	other - see notes
71393	Hackberry, Northern	<i>Celtis occidentalis</i>	12 to 18	1	Fair	9/3/2014	included bark	foliage disorder
71394	Pine, Ponderosa	<i>Pinus ponderosa</i>	6 to 12	1	Good	9/3/2014	N/A	other - see notes
71395	Pine, Ponderosa	<i>Pinus ponderosa</i>	0 to 6	1	Good	9/3/2014	N/A	N/A
71396	Pine, Austrian	<i>Pinus nigra</i>	6 to 12	1	Fair	9/3/2014	fair structure	other - see notes
71397	Pine, Austrian	<i>Pinus nigra</i>	6 to 12	1	Fair	9/3/2014	bow / sweep	other - see notes
71398	Pine, Austrian	<i>Pinus nigra</i>	0 to 6	1	Fair	9/3/2014	N/A	other - see notes
71399	Pine, Ponderosa	<i>Pinus ponderosa</i>	0 to 6	1	Fair	9/3/2014	N/A	other - see notes
71400	Pine, Ponderosa	<i>Pinus ponderosa</i>	6 to 12	1	Good	9/3/2014	N/A	other - see notes
71401	Pine, Scotch	<i>Pinus sylvestris</i>	0 to 6	1	Good	9/3/2014	N/A	N/A
71402	Pine, Austrian	<i>Pinus nigra</i>	6 to 12	1	Fair	9/3/2014	basal wound	other - see notes
71403	Pine, Austrian	<i>Pinus nigra</i>	6 to 12	1	Good	9/3/2014	bow / sweep	signs of stress
71404	Juniper, One Seed	<i>Juniperus monosperma</i>	6 to 12	2	Good	9/3/2014	N/A	other - see notes
71405	Pine, Scotch	<i>Pinus sylvestris</i>	6 to 12	1	Good	9/3/2014	bow / sweep	N/A
71406	Pine, Austrian	<i>Pinus nigra</i>	6 to 12	1	Fair	9/3/2014	lost main leader	other - see notes
71407	Pine, Scotch	<i>Pinus sylvestris</i>	0 to 6	1	Good	9/3/2014	N/A	other - see notes
71408	Pine, Austrian	<i>Pinus nigra</i>	6 to 12	1	Good	9/3/2014	N/A	N/A

Site ID	Species Common	Species Botanic	Diameter	Stems	Condition	Inventory Date	Structural Defect	Disease Pest
71409	Pine, Austrian	<i>Pinus nigra</i>	6 to 12	1	Fair	9/3/2014	N/A	other - see notes
71410	Ash, Green	<i>Fraxinus pennsylvanica</i>	18 to 24	1	Fair	9/3/2014	deadwood	foliage disorder
74839	Pine, Austrian	<i>Pinus nigra</i>	6 to 12	1	Fair	9/26/2014	leaning	other - see notes
74840	Vacant Site	<i>Vacant Site</i>	0	0	N/A			
74841	Ash, Green	<i>Fraxinus pennsylvanica</i>	18 to 24	1	Fair	9/26/2014	deadwood	borers
74842	Vacant Site	<i>Vacant Site</i>	0	0	N/A			
74843	Pine, Austrian	<i>Pinus nigra</i>	6 to 12	1	Fair	9/26/2014	N/A	other - see notes
74844	Vacant Site	<i>Vacant Site</i>	0	0	N/A			
74845	Ash, Green	<i>Fraxinus pennsylvanica</i>	24 to 30	1	Fair	9/26/2014	previous failure	signs of stress
74846	Pine, Austrian	<i>Pinus nigra</i>	0 to 6	1	Fair	9/26/2014	leaning	other - see notes
74847	Pine, Austrian	<i>Pinus nigra</i>	6 to 12	1	Fair	9/26/2014	leaning	other - see notes
74848	Pine, Austrian	<i>Pinus nigra</i>	0 to 6	1	Fair	9/26/2014	bow / sweep	other - see notes
74849	Pine, Ponderosa	<i>Pinus ponderosa</i>	0 to 6	1	Good	9/26/2014	bow / sweep	N/A
74850	Vacant Site	<i>Vacant Site</i>	0	0	N/A			
74851	Pine, Austrian	<i>Pinus nigra</i>	0 to 6	1	Fair	9/26/2014	bent bole	other - see notes
74852	Pine, Ponderosa	<i>Pinus ponderosa</i>	6 to 12	1	Good	9/26/2014	N/A	other - see notes
74853	Vacant Site	<i>Vacant Site</i>	0	0	N/A			
74854	Pine, Ponderosa	<i>Pinus ponderosa</i>	6 to 12	1	Fair	9/26/2014	multiple attachments	other - see notes
74855	Pine, Scotch	<i>Pinus sylvestris</i>	0 to 6	1	Good	9/26/2014	N/A	other - see notes
74856	Pine, Austrian	<i>Pinus nigra</i>	0 to 6	1	Fair	9/26/2014	bent bole	other - see notes
74857	Pine, Scotch	<i>Pinus sylvestris</i>	0 to 6	1	Fair	9/26/2014	crowded by larger tree	signs of stress
74858	Maple, Silver	<i>Acer saccharinum</i>	24 to 30	1	Fair	9/26/2014	deadwood	crown dieback
74859	Pine, Ponderosa	<i>Pinus ponderosa</i>	0 to 6	1	Very Poor	9/26/2014	leaning	needle necrosis
74860	Pine, Ponderosa	<i>Pinus ponderosa</i>	0 to 6	1	Fair	9/26/2014	crowded by larger tree	other - see notes
74861	Pine, Austrian	<i>Pinus nigra</i>	0 to 6	1	Fair	9/26/2014	fair structure	other - see notes
74862	Pine, Austrian	<i>Pinus nigra</i>	6 to 12	1	Fair	9/26/2014	bow / sweep	other - see notes
74863	Maple, Silver	<i>Acer saccharinum</i>	18 to 24	1	Poor	9/26/2014	deadwood	anthracnose

Site ID	Species Common	Species Botanic	Diameter	Stems	Condition	Inventory Date	Structural Defect	Disease Pest
74864	Pine, Ponderosa	<i>Pinus ponderosa</i>	6 to 12	1	Fair	9/26/2014	lost main leader	other - see notes
74865	Pine, Ponderosa	<i>Pinus ponderosa</i>	0 to 6	1	Poor	9/26/2014	N/A	other - see notes
74866	Maple, Silver	<i>Acer saccharinum</i>	18 to 24	1	Poor	9/26/2014	dead leaders	crown dieback
74867	Pine, Scotch	<i>Pinus sylvestris</i>	6 to 12	1	Good	9/26/2014	N/A	N/A
74868	Pine, Austrian	<i>Pinus nigra</i>	6 to 12	1	Fair	9/26/2014	N/A	other - see notes
74869	Vacant Site	<i>Vacant Site</i>	0	0	N/A			
74870	Pine, Ponderosa	<i>Pinus ponderosa</i>	18 to 24	1	Fair	9/26/2014	fair structure	other - see notes
74871	Vacant Site	<i>Vacant Site</i>	0	0	N/A			
74872	Pine, Ponderosa	<i>Pinus ponderosa</i>	18 to 24	1	Fair	9/26/2014	N/A	other - see notes
74873	Pine, Ponderosa	<i>Pinus ponderosa</i>	12 to 18	1	Fair	9/26/2014	N/A	other - see notes
74874	Pine, Ponderosa	<i>Pinus ponderosa</i>	12 to 18	1	Fair	9/26/2014	bent bole	other - see notes
74875	Pine, Ponderosa	<i>Pinus ponderosa</i>	12 to 18	1	Fair	9/26/2014	unbalanced crown	other - see notes
74876	Vacant Site	<i>Vacant Site</i>	0	0	N/A			
74877	Pine, Ponderosa	<i>Pinus ponderosa</i>	12 to 18	1	Poor	9/26/2014	N/A	other - see notes
74878	Locust, Honey	<i>Gleditsia triacanthos</i>	24 to 30	1	Fair	9/26/2014	deadwood	signs of stress
74879	Pine, Ponderosa	<i>Pinus ponderosa</i>	12 to 18	1	Poor	9/26/2014	unbalanced crown	other - see notes
74880	Locust, Honey	<i>Gleditsia triacanthos</i>	24 to 30	1	Fair	9/26/2014	deadwood	signs of stress
74881	Pine, Ponderosa	<i>Pinus ponderosa</i>	12 to 18	1	Fair	9/26/2014	N/A	other - see notes
74882	Pine, Ponderosa	<i>Pinus ponderosa</i>	12 to 18	1	Fair	9/26/2014	lost main leader	other - see notes
74883	Pine, Ponderosa	<i>Pinus ponderosa</i>	12 to 18	1	Fair	9/26/2014	unbalanced crown	other - see notes
74884	Pine, Ponderosa	<i>Pinus ponderosa</i>	12 to 18	1	Fair	9/26/2014	fair structure	other - see notes
74885	Pine, Ponderosa	<i>Pinus ponderosa</i>	12 to 18	1	Poor	9/26/2014	poor structure	other - see notes
74886	Pine, Ponderosa	<i>Pinus ponderosa</i>	18 to 24	1	Fair	9/29/2014	N/A	other - see notes
74887	Pine, Ponderosa	<i>Pinus ponderosa</i>	12 to 18	1	Fair	9/29/2014	fair structure	other - see notes
74888	Pine, Ponderosa	<i>Pinus ponderosa</i>	12 to 18	1	Fair	9/29/2014	Co-dominants	other - see notes
74889	Pine, Ponderosa	<i>Pinus ponderosa</i>	6 to 12	1	Fair	9/29/2014	poor structure	other - see notes
74890	Pine, Ponderosa	<i>Pinus ponderosa</i>	12 to 18	1	Poor	9/29/2014	serious decline	other - see notes

Site ID	Species Common	Species Botanic	Diameter	Stems	Condition	Inventory Date	Structural Defect	Disease Pest
74891	Pine, Ponderosa	<i>Pinus ponderosa</i>	12 to 18	1	Poor	9/29/2014	heavily pruned	other - see notes
74892	Pine, Ponderosa	<i>Pinus ponderosa</i>	24 to 30	1	Fair	9/29/2014	deadwood	other - see notes
74893	Tree of heaven	<i>Ailanthus altissima</i>	12 to 18	2	Fair	9/29/2014	included bark	N/A
74894	Tree of heaven	<i>Ailanthus altissima</i>	6 to 12	4	Fair	9/29/2014	included bark	N/A
74895	Tree of heaven	<i>Ailanthus altissima</i>	0 to 6	12	Fair	9/29/2014	other - see notes	N/A
74896	Tree of heaven	<i>Ailanthus altissima</i>	12 to 18	1	Fair	9/29/2014	Large Limbs/ scaffold defect	signs of stress
74897	Tree of heaven	<i>Ailanthus altissima</i>	12 to 18	1	Fair	9/29/2014	Co-dominants	signs of stress
74898	Ash, Green	<i>Fraxinus pennsylvanica</i>	18 to 24	1	Good	9/29/2014	N/A	signs of stress
74899	Tree of heaven	<i>Ailanthus altissima</i>	18 to 24	1	Poor	9/29/2014	basal decay	fruiting bodies
74900	Juniper, Rocky Mountain	<i>Juniperus scopulorum</i>	12 to 18	1	Good	9/29/2014	included bark	N/A
74901	Ash, Green	<i>Fraxinus pennsylvanica</i>	18 to 24	1	Poor	9/29/2014	stress epicormics	crown dieback
74902	Pine, Ponderosa	<i>Pinus ponderosa</i>	6 to 12	1	Fair	9/29/2014	bent bole	other - see notes
74903	Pine, Ponderosa	<i>Pinus ponderosa</i>	12 to 18	1	Fair	9/29/2014	lost main leader	other - see notes
74904	Pine, Ponderosa	<i>Pinus ponderosa</i>	18 to 24	1	Fair	9/29/2014	deadwood	other - see notes
74905	Pine, Ponderosa	<i>Pinus ponderosa</i>	12 to 18	1	Poor	9/29/2014	crowded by larger tree	other - see notes
74906	Pine, Ponderosa	<i>Pinus ponderosa</i>	18 to 24	1	Fair	9/29/2014	multiple attachments	other - see notes
74907	Pine, Ponderosa	<i>Pinus ponderosa</i>	12 to 18	1	Poor	9/29/2014	bent bole	other - see notes
74908	Pine, Ponderosa	<i>Pinus ponderosa</i>	12 to 18	1	Fair	9/29/2014	poor structure	other - see notes
74909	Pine, Scotch	<i>Pinus sylvestris</i>	12 to 18	1	Fair	9/29/2014	basal wound	N/A
74910	Vacant Site	<i>Vacant Site</i>	0	0	N/A			
74911	Locust, Honey	<i>Gleditsia triacanthos</i>	12 to 18	1	Fair	9/29/2014	basal wound	signs of stress
74912	Crabapple, Flowering	<i>Malus sylvestris</i>	0 to 6	12	Fair	9/29/2014	other - see notes	fire blight
74913	Crabapple, Flowering	<i>Malus sylvestris</i>	0 to 6	5	Fair	9/29/2014	other - see notes	fire blight
74914	Pine, Scotch	<i>Pinus sylvestris</i>	12 to 18	1	Good	9/29/2014	N/A	other - see notes
74915	Pine, Scotch	<i>Pinus sylvestris</i>	18 to 24	1	Fair	9/29/2014	N/A	other - see notes

Site ID	Species Common	Species Botanic	Diameter	Stems	Condition	Inventory Date	Structural Defect	Disease Pest
74916	Pine, Scotch	<i>Pinus sylvestris</i>	12 to 18	1	Good	9/29/2014	N/A	other - see notes
74917	Stump	<i>Stump</i>	6 to 12	2	N/A	needle blight		
74918	Vacant Site	<i>Vacant Site</i>	0	0	N/A			
74919	Pine, Scotch	<i>Pinus sylvestris</i>	12 to 18	1	Fair	9/29/2014	basal wound	other - see notes
74920	Locust, Honey	<i>Gleditsia triacanthos</i>	18 to 24	1	Good	9/29/2014	N/A	N/A
74921	Linden, American	<i>Tilia americana</i>	18 to 24	1	Fair	9/29/2014	Co-dominants	foliage disorder
74922	Ash, Green	<i>Fraxinus pennsylvanica</i>	12 to 18	1	Fair	9/29/2014	stress epicormics	foliage disorder
74923	Linden, Littleleaf	<i>Tilia cordata</i>	18 to 24	1	Fair	9/29/2014	serious decline	foliage disorder
74924	Linden, Littleleaf	<i>Tilia cordata</i>	6 to 12	1	Fair	9/29/2014	serious decline	foliage disorder
74925	Vacant Site	<i>Vacant Site</i>	0	0	N/A			
74926	Elm	<i>Ulmus species</i>	36 to 42	1	Fair	9/29/2014	N/A	foliage disorder
74927	Pine, Ponderosa	<i>Pinus ponderosa</i>	18 to 24	1	Fair	9/29/2014	N/A	other - see notes
74928	Pine, Ponderosa	<i>Pinus ponderosa</i>	24 to 30	1	Fair	9/29/2014	N/A	other - see notes
74929	Pine, Ponderosa	<i>Pinus ponderosa</i>	12 to 18	1	Poor	9/29/2014	serious decline	other - see notes
74930	Pine, Ponderosa	<i>Pinus ponderosa</i>	12 to 18	1	Fair	9/29/2014	fair structure	other - see notes
74931	Vacant Site	<i>Vacant Site</i>	0	0	N/A			
74932	Pine, Ponderosa	<i>Pinus ponderosa</i>	12 to 18	1	Fair	9/29/2014	bow / sweep	other - see notes
74933	Pine, Ponderosa	<i>Pinus ponderosa</i>	18 to 24	1	Fair	9/29/2014	bow / sweep	other - see notes
74934	Pine, Ponderosa	<i>Pinus ponderosa</i>	12 to 18	1	Very Poor	9/29/2014	serious decline	N/A
74935	Pine, Ponderosa	<i>Pinus ponderosa</i>	18 to 24	1	Fair	9/29/2014	included bark	other - see notes
74936	Pine, Ponderosa	<i>Pinus ponderosa</i>	12 to 18	1	Fair	9/29/2014	fair structure	other - see notes
74937	Pine, Ponderosa	<i>Pinus ponderosa</i>	12 to 18	1	Fair	9/29/2014	unbalanced crown	other - see notes
74938	Pine, Ponderosa	<i>Pinus ponderosa</i>	12 to 18	1	Fair	9/29/2014	N/A	other - see notes
74939	Juniper, Rocky Mountain	<i>Juniperus scopulorum</i>	12 to 18	2	Fair	9/29/2014	cavity	N/A
74940	Pine, Ponderosa	<i>Pinus ponderosa</i>	6 to 12	1	Poor	9/29/2014	serious decline	needle necrosis
74941	Pine, Ponderosa	<i>Pinus ponderosa</i>	12 to 18	1	Fair	9/29/2014	N/A	other - see notes
74942	Elm	<i>Ulmus species</i>	6 to 12	1	Fair	9/29/2014	N/A	thin canopy

Site ID	Species Common	Species Botanic	Diameter	Stems	Condition	Inventory Date	Structural Defect	Disease Pest
74943	Cottonwood, Lanceleaf	<i>Populus x acuminata</i>	12 to 18	1	Good	9/29/2014	N/A	N/A
74944	Linden, Littleleaf	<i>Tilia cordata</i>	18 to 24	1	Poor	9/29/2014	included bark	foliage disorder
74945	Ash, Green	<i>Fraxinus pennsylvanica</i>	12 to 18	1	Fair	9/29/2014	deadwood	signs of stress
74946	Ash, Green	<i>Fraxinus pennsylvanica</i>	12 to 18	1	Fair	9/29/2014	N/A	signs of stress
74947	Vacant Site	<i>Vacant Site</i>	0	0	N/A			
74948	Ash, Green	<i>Fraxinus pennsylvanica</i>	12 to 18	1	Fair	9/29/2014	N/A	foliage disorder
74949	Ash, Green	<i>Fraxinus pennsylvanica</i>	18 to 24	1	Fair	9/29/2014	basal decay	foliage disorder
74950	Linden, Littleleaf	<i>Tilia cordata</i>	6 to 12	1	Fair	9/29/2014	N/A	foliage disorder
74951	Vacant Site	<i>Vacant Site</i>	0	0	N/A			
74952	Oak, Bur	<i>Quercus macrocarpa</i>	6 to 12	1	Fair	9/29/2014	trunk wounds	foliage disorder
74953	Ash, Green	<i>Fraxinus pennsylvanica</i>	12 to 18	1	Fair	9/29/2014	other - see notes	foliage disorder
74954	Vacant Site	<i>Vacant Site</i>	0	0	N/A	Z-17=GC1 (City park GC)		
74955	Pine, Austrian	<i>Pinus nigra</i>	6 to 12	1	Good	9/30/2014	N/A	signs of stress
74956	Pine, Austrian	<i>Pinus nigra</i>	6 to 12	1	Good	9/30/2014	N/A	signs of stress
74957	Pine, Austrian	<i>Pinus nigra</i>	6 to 12	1	Good	9/30/2014	bow / sweep	N/A
74958	Pine, Austrian	<i>Pinus nigra</i>	6 to 12	1	Good	9/30/2014	fair structure	signs of stress
74959	Vacant Site	<i>Vacant Site</i>	0	0	N/A			
74960	Pine, Scotch	<i>Pinus sylvestris</i>	6 to 12	1	Good	9/30/2014	N/A	N/A
74961	Pine, Austrian	<i>Pinus nigra</i>	6 to 12	1	Fair	9/30/2014	leaning	other - see notes
74962	Pine, Austrian	<i>Pinus nigra</i>	6 to 12	1	Fair	9/30/2014	N/A	other - see notes
74963	Pine, Austrian	<i>Pinus nigra</i>	6 to 12	1	Fair	9/30/2014	bow / sweep	other - see notes
74964	Pine, Ponderosa	<i>Pinus ponderosa</i>	6 to 12	1	Poor	9/30/2014	serious decline	needle necrosis
74965	Pine, Austrian	<i>Pinus nigra</i>	6 to 12	1	Fair	9/30/2014	bow / sweep	other - see notes
74966	Pine, Austrian	<i>Pinus nigra</i>	0 to 6	1	Fair	9/30/2014	N/A	other - see notes
74967	Linden, American	<i>Tilia americana</i>	6 to 12	1	Poor	9/30/2014	basal wound	foliage disorder
74968	Pine, Scotch	<i>Pinus sylvestris</i>	6 to 12	1	Good	9/30/2014	bow / sweep	N/A
74969	Pine, Austrian	<i>Pinus nigra</i>	6 to 12	1	Fair	9/30/2014	basal wound	other - see notes

Site ID	Species Common	Species Botanic	Diameter	Stems	Condition	Inventory Date	Structural Defect	Disease Pest
74970	Vacant Site	<i>Vacant Site</i>	0	0	N/A			
74971	Pine, Austrian	<i>Pinus nigra</i>	6 to 12	1	Good	9/30/2014	bow / sweep	signs of stress
74972	Pine, Austrian	<i>Pinus nigra</i>	6 to 12	1	Good	9/30/2014	bow / sweep	N/A
74973	Vacant Site	<i>Vacant Site</i>	0	0	N/A			
74974	Vacant Site	<i>Vacant Site</i>	0	0	N/A			
74975	Pine, Scotch	<i>Pinus sylvestris</i>	6 to 12	1	Good	9/30/2014	basal wound	N/A
74976	Pine, Austrian	<i>Pinus nigra</i>	6 to 12	1	Fair	9/30/2014	N/A	other - see notes
74977	Pine, Austrian	<i>Pinus nigra</i>	6 to 12	1	Fair	9/30/2014	bow / sweep	other - see notes
74978	Pine, Austrian	<i>Pinus nigra</i>	0 to 6	1	Fair	9/30/2014	bent bole	other - see notes
74979	Pine, Scotch	<i>Pinus sylvestris</i>	6 to 12	1	Good	9/30/2014	N/A	N/A
74980	Pine, Austrian	<i>Pinus nigra</i>	6 to 12	1	Good	9/30/2014	N/A	other - see notes
74981	Pine, Scotch	<i>Pinus sylvestris</i>	6 to 12	1	Good	9/30/2014	fair structure	N/A
74982	Pine, Austrian	<i>Pinus nigra</i>	6 to 12	1	Good	9/30/2014	bow / sweep	other - see notes
74983	Pine, Austrian	<i>Pinus nigra</i>	0 to 6	1	Good	9/30/2014	N/A	other - see notes
74984	Pine, Austrian	<i>Pinus nigra</i>	12 to 18	1	Fair	9/30/2014	Co-dominants	other - see notes
74985	Pine, Austrian	<i>Pinus nigra</i>	6 to 12	1	Good	9/30/2014	N/A	other - see notes
74986	Pine, Austrian	<i>Pinus nigra</i>	6 to 12	1	Good	9/30/2014	leaning	other - see notes
74987	Pine, Austrian	<i>Pinus nigra</i>	6 to 12	1	Fair	9/30/2014	leaning - corrected	other - see notes
74988	Oak, Bur	<i>Quercus macrocarpa</i>	6 to 12	1	Fair	9/30/2014	basal wound	foliage disorder
74989	Pine, Austrian	<i>Pinus nigra</i>	6 to 12	1	Fair	9/30/2014	bent bole	other - see notes
74990	Pine, Austrian	<i>Pinus nigra</i>	6 to 12	1	Fair	9/30/2014	bow / sweep	other - see notes
74991	Pine, Scotch	<i>Pinus sylvestris</i>	0 to 6	1	Good	9/30/2014	lost main leader	other - see notes
74992	Pine, Austrian	<i>Pinus nigra</i>	6 to 12	1	Good	9/30/2014	bow / sweep	other - see notes
74993	Pine, Austrian	<i>Pinus nigra</i>	6 to 12	1	Good	9/30/2014	bow / sweep	other - see notes
74994	Pine, Austrian	<i>Pinus nigra</i>	6 to 12	1	Fair	9/30/2014	leaning	other - see notes
74995	Pine, Austrian	<i>Pinus nigra</i>	6 to 12	1	Good	9/30/2014	included bark	other - see notes
74996	Pine, Scotch	<i>Pinus sylvestris</i>	6 to 12	1	Good	9/30/2014	lost main leader	N/A
74997	Pine, Austrian	<i>Pinus nigra</i>	6 to 12	1	Good	9/30/2014	bow / sweep	needle necrosis

Site ID	Species Common	Species Botanic	Diameter	Stems	Condition	Inventory Date	Structural Defect	Disease Pest
74998	Pine, Austrian	<i>Pinus nigra</i>	6 to 12	1	Good	9/30/2014	bow / sweep	other - see notes
74999	Cottonwood, Lanceleaf	<i>Populus x acuminata</i>	6 to 12	1	Fair	9/30/2014	basal wound	foliage disorder
75000	Pine, Scotch	<i>Pinus sylvestris</i>	0 to 6	1	Good	9/30/2014	bow / sweep	N/A
75001	Pine, Austrian	<i>Pinus nigra</i>	6 to 12	1	Good	9/30/2014	Co-dominants	other - see notes
75002	Pine, Scotch	<i>Pinus sylvestris</i>	6 to 12	1	Good	9/30/2014	fair structure	N/A
75003	Pine, Austrian	<i>Pinus nigra</i>	6 to 12	1	Good	9/30/2014	Co-dominants	other - see notes
75004	Pine, Austrian	<i>Pinus nigra</i>	12 to 18	1	Good	9/30/2014	fair structure	N/A
75005	Pine, Austrian	<i>Pinus nigra</i>	12 to 18	1	Fair	9/30/2014	N/A	other - see notes
75006	Cottonwood, Lanceleaf	<i>Populus x acuminata</i>	12 to 18	1	Good	9/30/2014	N/A	foliage disorder
75007	Cottonwood, Lanceleaf	<i>Populus x acuminata</i>	6 to 12	1	Fair	9/30/2014	basal wound	foliage disorder
75008	Linden, Littleleaf	<i>Tilia cordata</i>	12 to 18	1	Fair	9/30/2014	other - see notes	foliage disorder
75009	Pine, Austrian	<i>Pinus nigra</i>	6 to 12	1	Good	9/30/2014	N/A	other - see notes
75010	Pine, Austrian	<i>Pinus nigra</i>	6 to 12	1	Fair	9/30/2014	N/A	other - see notes
75011	Pine, Austrian	<i>Pinus nigra</i>	6 to 12	1	Fair	9/30/2014	bow / sweep	other - see notes
75012	Pine, Austrian	<i>Pinus nigra</i>	6 to 12	1	Good	9/30/2014	bow / sweep	other - see notes
75013	Pine, Ponderosa	<i>Pinus ponderosa</i>	18 to 24	1	Fair	9/30/2014	leaning	other - see notes
75014	Pine, Ponderosa	<i>Pinus ponderosa</i>	12 to 18	1	Fair	9/30/2014	bow / sweep	other - see notes
75015	Pine, Ponderosa	<i>Pinus ponderosa</i>	12 to 18	1	Fair	9/30/2014	leaning	other - see notes
75016	Stump	<i>Stump</i>	6 to 12	1	N/A			
75017	Juniper, Rocky Mountain	<i>Juniperus scopulorum</i>	12 to 18	1	Good	9/30/2014	N/A	N/A
75018	Pine, Ponderosa	<i>Pinus ponderosa</i>	18 to 24	1	Fair	9/30/2014	leaning	other - see notes
75019	Tree of heaven	<i>Ailanthus altissima</i>	0 to 6	12	Poor	9/30/2014	other - see notes	N/A
75020	Maple, Silver	<i>Acer saccharinum</i>	18 to 24	1	Fair	9/30/2014	deadwood	foliage disorder
75021	Oak, Bur	<i>Quercus macrocarpa</i>	6 to 12	1	Good	9/30/2014	N/A	foliage disorder
75022	Cottonwood, Lanceleaf	<i>Populus x acuminata</i>	12 to 18	1	Good	9/30/2014	N/A	foliage disorder

Site ID	Species Common	Species Botanic	Diameter	Stems	Condition	Inventory Date	Structural Defect	Disease Pest
75023	Coffeetree, Kentucky	<i>Gymnocladus dioicus</i>	12 to 18	1	Good	9/30/2014	loose cracked bark	N/A
75024	Oak, Bur	<i>Quercus macrocarpa</i>	6 to 12	1	Good	9/30/2014	N/A	foliage disorder
75025	Horsechestnut	<i>Aesculus hippocastanum</i>	0 to 6	1	Fair	9/30/2014	basal wound	foliage disorder
75026	Locust, Honey	<i>Gleditsia triacanthos</i>	6 to 12	1	Fair	9/30/2014	basal wound	foliage disorder
75027	Linden, American	<i>Tilia americana</i>	6 to 12	1	Fair	9/30/2014	basal wound	foliage disorder
75028	Oak, Bur	<i>Quercus macrocarpa</i>	6 to 12	1	Good	9/30/2014	N/A	foliage disorder
75029	Maple, Silver	<i>Acer saccharinum</i>	18 to 24	1	Fair	9/30/2014	deadwood	anthracnose
75030	Linden, American	<i>Tilia americana</i>	6 to 12	1	Fair	9/30/2014	other - see notes	anthracnose
75031	Pine, Austrian	<i>Pinus nigra</i>	6 to 12	1	Fair	9/30/2014	bent bole	other - see notes
75032	Pine, Austrian	<i>Pinus nigra</i>	6 to 12	1	Fair	9/30/2014	N/A	other - see notes
75033	Pine, Austrian	<i>Pinus nigra</i>	6 to 12	1	Fair	9/30/2014	fair structure	other - see notes
75034	Linden, American	<i>Tilia americana</i>	12 to 18	1	Good	9/30/2014	N/A	anthracnose
75035	Pine, Ponderosa	<i>Pinus ponderosa</i>	12 to 18	1	Fair	9/30/2014	bow / sweep	other - see notes
75036	Pine, Ponderosa	<i>Pinus ponderosa</i>	12 to 18	1	Fair	9/30/2014	bent bole	other - see notes
75037	Pine, Ponderosa	<i>Pinus ponderosa</i>	12 to 18	1	Fair	9/30/2014	leaning	other - see notes
75038	Locust, Honey	<i>Gleditsia triacanthos</i>	12 to 18	1	Poor	9/30/2014	deadwood	foliage disorder
75039	Pine, Ponderosa	<i>Pinus ponderosa</i>	18 to 24	1	Fair	9/30/2014	previous failure	other - see notes
75040	Pine, Ponderosa	<i>Pinus ponderosa</i>	12 to 18	1	Fair	9/30/2014	crowded by larger tree	other - see notes
75041	Locust, Honey	<i>Gleditsia triacanthos</i>	24 to 30	1	Fair	9/30/2014	deadwood	foliage disorder
75042	Locust, Honey	<i>Gleditsia triacanthos</i>	24 to 30	1	Fair	9/30/2014	crowded by larger tree	signs of stress
75043	Poplar, Lombardy	<i>Populus nigra 'italica'</i>	48 +	1	Fair	9/30/2014	leaning	signs of stress
75044	Pine, Ponderosa	<i>Pinus ponderosa</i>	18 to 24	1	Good	9/30/2014	N/A	other - see notes
75045	Pine, Ponderosa	<i>Pinus ponderosa</i>	18 to 24	1	Fair	9/30/2014	leaning	other - see notes
75046	Pine, Ponderosa	<i>Pinus ponderosa</i>	12 to 18	1	Fair	9/30/2014	bow / sweep	other - see notes
75047	Pine, Ponderosa	<i>Pinus ponderosa</i>	12 to 18	1	Fair	9/30/2014	leaning	other - see notes
75048	Pine, Ponderosa	<i>Pinus ponderosa</i>	12 to 18	1	Fair	9/30/2014	basal wound	other - see notes

Site ID	Species Common	Species Botanic	Diameter	Stems	Condition	Inventory Date	Structural Defect	Disease Pest
75049	Cottonwood, Plains	<i>Populus sargentii</i>	30 to 36	1	Fair	9/30/2014	Large Limbs/scaffold defect	signs of stress
75050	Locust, Honey	<i>Gleditsia triacanthos</i>	24 to 30	1	Fair	9/30/2014	deadwood	foliage disorder
75051	Locust, Honey	<i>Gleditsia triacanthos</i>	12 to 18	1	Fair	9/30/2014	deadwood	foliage disorder
75052	Cottonwood, Plains	<i>Populus sargentii</i>	48 +	1	Poor	9/30/2014	cavity	signs of stress
75053	Ash, Green	<i>Fraxinus pennsylvanica</i>	18 to 24	1	Fair	9/30/2014	previous failure	signs of stress
75054	Ash, Green	<i>Fraxinus pennsylvanica</i>	18 to 24	1	Fair	9/30/2014	previous failure	foliage disorder
75055	Locust, Honey	<i>Gleditsia triacanthos</i>	24 to 30	1	Fair	9/30/2014	deadwood	foliage disorder
75056	Locust, Honey	<i>Gleditsia triacanthos</i>	30 to 36	1	Poor	9/30/2014	deadwood	foliage disorder
75057	Cottonwood, Plains	<i>Populus sargentii</i>	48 +	1	Poor	9/30/2014	large leader or limb decay	crown dieback
75058	Maple, Silver	<i>Acer saccharinum</i>	24 to 30	1	Poor	9/30/2014	dead root tissue	crown dieback
75059	Cottonwood, Plains	<i>Populus sargentii</i>	42 to 48	1	Poor	9/30/2014	lost major leader or limb	crown dieback
75060	Hackberry, Northern	<i>Celtis occidentalis</i>	24 to 30	1	Fair	9/30/2014	previous failure	foliage disorder
75061	Vacant Site	<i>Vacant Site</i>	0	0	N/A			
75062	Cottonwood, Plains	<i>Populus sargentii</i>	36 to 42	1	Fair	9/30/2014	deadwood	signs of stress
75063	Hackberry, Northern	<i>Celtis occidentalis</i>	6 to 12	1	Poor	9/30/2014	lost main leader	foliage disorder
75064	Maple, Silver	<i>Acer saccharinum</i>	12 to 18	5	Poor	9/30/2014	dead leaders	foliage disorder
75065	Pine, Scotch	<i>Pinus sylvestris</i>	12 to 18	1	Good	9/30/2014	N/A	N/A
75066	Pine, Scotch	<i>Pinus sylvestris</i>	12 to 18	1	Good	9/30/2014	N/A	other - see notes
75067	Pine, Ponderosa	<i>Pinus ponderosa</i>	18 to 24	1	Fair	9/30/2014	leaning	other - see notes
75068	Pine, Ponderosa	<i>Pinus ponderosa</i>	18 to 24	1	Fair	9/30/2014	bow / sweep	other - see notes
75069	Spruce, Blue	<i>Picea pungens</i>	6 to 12	1	Fair	9/30/2014	unbalanced crown	signs of stress
75070	Stump	<i>Stump</i>	6 to 12	1	N/A			
75071	Spruce, Blue	<i>Picea pungens</i>	12 to 18	1	Fair	9/30/2014	lost main leader	signs of stress
75072	Cottonwood, Plains	<i>Populus sargentii</i>	48 +	1	Fair	9/30/2014	Large Limbs/scaffold defect	signs of stress

Site ID	Species Common	Species Botanic	Diameter	Stems	Condition	Inventory Date	Structural Defect	Disease Pest
75073	Linden, American	<i>Tilia americana</i>	6 to 12	1	Fair	9/30/2014	N/A	foliage disorder
75074	Cottonwood, Plains	<i>Populus sargentii</i>	48 +	1	Very Poor	9/30/2014	deadwood	crown dieback
75075	Cottonwood, Plains	<i>Populus sargentii</i>	48 +	1	Poor	9/30/2014	previous failure	crown dieback
75076	Cottonwood, Plains	<i>Populus sargentii</i>	48 +	1	Very Poor	9/30/2014	dead leaders	crown dieback
75077	Vacant Site	<i>Vacant Site</i>	0	0	N/A			
75078	Pine, Ponderosa	<i>Pinus ponderosa</i>	12 to 18	1	Fair	9/30/2014	lost main leader	other - see notes
75079	Hawthorn	<i>Crataegus species</i>	0 to 6	1	Good	9/30/2014	N/A	N/A
75080	Hawthorn	<i>Crataegus species</i>	0 to 6	1	Excellent	9/30/2014	N/A	N/A
75081	Lilac, Japanese Tree	<i>Syringa reticulata</i>	0 to 6	1	Good	9/30/2014	N/A	N/A
75082	Spruce, Blue	<i>Picea pungens</i>	12 to 18	1	Fair	9/30/2014	bow / sweep	signs of stress
75083	Maple, Silver	<i>Acer saccharinum</i>	36 to 42	1	Poor	9/30/2014	included bark	foliage disorder
75084	Maple, Silver	<i>Acer saccharinum</i>	30 to 36	1	Fair	9/30/2014	deadwood	foliage disorder
75085	Linden, American	<i>Tilia americana</i>	24 to 30	1	Fair	9/30/2014	circling / crossing roots	foliage disorder
75086	Cottonwood, Lanceleaf	<i>Populus x acuminata</i>	30 to 36	1	Fair	9/30/2014	N/A	foliage disorder
75087	Pine, Austrian	<i>Pinus nigra</i>	18 to 24	1	Dead	9/30/2014	leaning - corrected	8/1/17 - Poor to Dead
75088	Coffeetree, Kentucky	<i>Gymnocladus dioicus</i>	12 to 18	1	Fair	9/30/2014	Large Limbs/ scaffold defect	N/A
75089	Catalpa, Western	<i>Catalpa speciosa</i>	0 to 6	1	Poor	9/30/2014	basal decay	foliage disorder
75090	Oak, Wavy Leaf	<i>Quercus undulata</i>	6 to 12	1	Fair	9/30/2014	in failure	foliage disorder
75091	Pine, Austrian	<i>Pinus nigra</i>	18 to 24	1	Good	9/30/2014	N/A	other - see notes
75092	Pine, Austrian	<i>Pinus nigra</i>	18 to 24	1	Good	9/30/2014	Co-dominants	other - see notes
75093	Maple, Silver	<i>Acer saccharinum</i>	12 to 18	1	Very Poor	9/30/2014	fair structure	crown dieback
75094	Pine, Ponderosa	<i>Pinus ponderosa</i>	6 to 12	1	Fair	9/30/2014	Co-dominants	other - see notes
75095	Pine, Ponderosa	<i>Pinus ponderosa</i>	12 to 18	1	Good	9/30/2014	Co-dominants	other - see notes
75096	Pine, Ponderosa	<i>Pinus ponderosa</i>	12 to 18	1	Fair	9/30/2014	included bark	other - see notes
75097	Pine, Ponderosa	<i>Pinus ponderosa</i>	18 to 24	1	Good	9/30/2014	Co-dominants	other - see notes
75098	Pine, Ponderosa	<i>Pinus ponderosa</i>	18 to 24	1	Good	9/30/2014	N/A	other - see notes

Site ID	Species Common	Species Botanic	Diameter	Stems	Condition	Inventory Date	Structural Defect	Disease Pest
75099	Elm, Hybrid	<i>Ulmus x hybrida</i>	0 to 6	7	Fair	9/30/2014	stress epicormics	elm leaf beetle
75100	Tree of heaven	<i>Ailanthus altissima</i>	12 to 18	1	Fair	9/30/2014	poor location	N/A
75101	Vacant Site	<i>Vacant Site</i>	0	0	N/A			
75102	Vacant Site	<i>Vacant Site</i>	0	0	N/A			
75103	Spruce, Blue	<i>Picea pungens</i>	30 to 36	1	Poor	9/30/2014	poor structure	needle necrosis
75104	Vacant Site	<i>Vacant Site</i>	0	0	N/A			
75105	Oak, Wavy Leaf	<i>Quercus undulata</i>	6 to 12	1	Very Poor	9/30/2014	unbalanced crown	foliage disorder
75106	Locust, Honey	<i>Gleditsia triacanthos</i>	6 to 12	1	Fair	9/30/2014	basal wound	foliage disorder
75107	Oak, Swamp White	<i>Quercus bicolor</i>	6 to 12	1	Fair	9/30/2014	basal wound	foliage disorder
75108	Vacant Site	<i>Vacant Site</i>	0	0	N/A			
75109	Vacant Site	<i>Vacant Site</i>	0	0	N/A			
75110	Vacant Site	<i>Vacant Site</i>	0	0	N/A			
75111	Vacant Site	<i>Vacant Site</i>	0	0	N/A			
75112	Vacant Site	<i>Vacant Site</i>	0	0	N/A			
75113	Vacant Site	<i>Vacant Site</i>	0	0	N/A			
75114	Vacant Site	<i>Vacant Site</i>	0	0	N/A			
75115	Spruce, Blue	<i>Picea pungens</i>	12 to 18	1	Fair	9/30/2014	bent bole	other - see notes
75116	Cottonwood, Plains	<i>Populus sargentii</i>	48 +	1	Fair	9/30/2014	deadwood	signs of stress
75117	Cottonwood, Plains	<i>Populus sargentii</i>	48 +	1	Fair	9/30/2014	other - see notes	N/A
75118	Pine, Austrian	<i>Pinus nigra</i>	18 to 24	1	Fair	9/30/2014	bow / sweep	other - see notes
75119	Pine, Austrian	<i>Pinus nigra</i>	18 to 24	1	Fair	9/30/2014	circling / crossing roots	other - see notes
75120	Cottonwood, Lanceleaf	<i>Populus x acuminata</i>	18 to 24	1	Good	9/30/2014	N/A	foliage disorder
75121	Cottonwood, Lanceleaf	<i>Populus x acuminata</i>	18 to 24	1	Fair	9/30/2014	N/A	foliage disorder
75122	Maple, Silver	<i>Acer saccharinum</i>	12 to 18	1	Fair	9/30/2014	basal wound	foliage disorder
75123	Vacant Site	<i>Vacant Site</i>	0	0	N/A			
75124	Horsechestnut	<i>Aesculus hippocastanum</i>	0 to 6	1	Poor	9/30/2014	basal decay	foliage disorder

Site ID	Species Common	Species Botanic	Diameter	Stems	Condition	Inventory Date	Structural Defect	Disease Pest
75125	Cottonwood, Lanceleaf	<i>Populus x acuminata</i>	18 to 24	1	Fair	9/30/2014	included bark	foliage disorder
75126	Oak, Bur	<i>Quercus macrocarpa</i>	12 to 18	1	Fair	9/30/2014	N/A	foliage disorder
75127	Linden, American	<i>Tilia americana</i>	18 to 24	1	Fair	9/30/2014	Co-dominants	foliage disorder
75128	Pine, Ponderosa	<i>Pinus ponderosa</i>	24 to 30	1	Fair	9/30/2014	leaning	other - see notes
75129	Maple, Silver	<i>Acer saccharinum</i>	24 to 30	1	Fair	9/30/2014	deadwood	foliage disorder
75130	Cottonwood, Plains	<i>Populus sargentii</i>	42 to 48	1	Fair	9/30/2014	Large Limbs/scaffold defect	signs of stress
75131	Cottonwood, Plains	<i>Populus sargentii</i>	36 to 42	1	Fair	9/30/2014	lost major leader or limb	signs of stress
75132	Pine, Austrian	<i>Pinus nigra</i>	12 to 18	1	Fair	9/30/2014	fair structure	other - see notes
75133	Pine, Scotch	<i>Pinus sylvestris</i>	12 to 18	1	Good	9/30/2014	N/A	other - see notes
75134	Pine, Scotch	<i>Pinus sylvestris</i>	6 to 12	1	Fair	9/30/2014	N/A	other - see notes
75135	Pine, Austrian	<i>Pinus nigra</i>	12 to 18	1	Fair	9/30/2014	fair structure	other - see notes
75136	Pine, Scotch	<i>Pinus sylvestris</i>	12 to 18	1	Dead			
75137	Pine, Scotch	<i>Pinus sylvestris</i>	6 to 12	1	Fair	9/30/2014	basal wound	other - see notes
75138	Linden, Littleleaf	<i>Tilia cordata</i>	0	0	Fair	7/1/2016	lost major leader or limb	N/A
75139	Sequoia, Giant	<i>Sequoiadendron giganteum</i>	0 to 6	1	Good	9/30/2014		
75140	Sequoia, Giant	<i>Sequoiadendron giganteum</i>	0 to 6	1	Good	9/30/2014		
75141	Linden, American	<i>Tilia americana</i>	12 to 18	1	Fair	9/30/2014	basal wound	foliage disorder
75142	Linden, American	<i>Tilia americana</i>	0 to 6	0	Good	9/30/2014	N/A	N/A
75143	Pine, Scotch	<i>Pinus sylvestris</i>	12 to 18	1	Good	9/30/2014	N/A	other - see notes
75144	Pine, Austrian	<i>Pinus nigra</i>	6 to 12	1	Fair	9/30/2014	basal wound	other - see notes
75145	Sequoia, Giant	<i>Sequoiadendron giganteum</i>	0 to 6	1	Good	9/30/2014	N/A	N/A
75146	Pine, Scotch	<i>Pinus sylvestris</i>	6 to 12	1	Good	9/30/2014	N/A	other - see notes
75147	Pine, Scotch	<i>Pinus sylvestris</i>	12 to 18	1	Good	9/30/2014	N/A	sapsucker damage

Site ID	Species Common	Species Botanic	Diameter	Stems	Condition	Inventory Date	Structural Defect	Disease Pest
75148	Pine, Scotch	<i>Pinus sylvestris</i>	12 to 18	1	Good	9/30/2014	N/A	other - see notes
75149	Sequoia, Giant	<i>Sequoiadendron giganteum</i>	0 to 6	1	Good	9/30/2014		N/A
75150	Pine, Scotch	<i>Pinus sylvestris</i>	6 to 12	1	Fair	9/30/2014	N/A	other - see notes
75151	Pine, Scotch	<i>Pinus sylvestris</i>	6 to 12	1	Dead	9/30/2014	N/A	
75152	Pine, Scotch	<i>Pinus sylvestris</i>	6 to 12	1	Good	9/30/2014	N/A	N/A
75153	Pine, Scotch	<i>Pinus sylvestris</i>	6 to 12	1	Fair	9/30/2014	dead trunk tissue	N/A
75154	Pine, Scotch	<i>Pinus sylvestris</i>	6 to 12	1	Fair	9/30/2014	N/A	other - see notes
75155	Cottonwood, Plains	<i>Populus sargentii</i>	0 to 6	1	Good	9/30/2014		
75156	Cottonwood, Lanceleaf	<i>Populus x acuminata</i>	18 to 24	1	Fair	9/30/2014	deadwood	foliage disorder
75157	Cottonwood, Plains	<i>Populus sargentii</i>	0 to 6	1	Good	9/30/2014	N/A	
75158	Pine, Austrian	<i>Pinus nigra</i>	0 to 6	1	Good	9/30/2014		
75159	Pine, Scotch	<i>Pinus sylvestris</i>	6 to 12	1	Dead	9/30/2014	N/A	
75160	Sequoia, Giant	<i>Sequoiadendron giganteum</i>	0 to 6	0	Dead			
75161	Cottonwood, Plains	<i>Populus sargentii</i>	0 to 6	1	Good	9/30/2014		
75162	Pine, Scotch	<i>Pinus sylvestris</i>	6 to 12	1	Dead	9/30/2014	N/A	
75163	Pine, Austrian	<i>Pinus nigra</i>	0 to 6	0	Good	9/30/2014	N/A	N/A
75164	Pine, Scotch	<i>Pinus sylvestris</i>	6 to 12	1	Poor	9/30/2014	N/A	N/A
75165	Pine, Scotch	<i>Pinus sylvestris</i>	6 to 12	1	Good	9/30/2014	N/A	other - see notes
75166	Pine, Scotch	<i>Pinus sylvestris</i>	6 to 12	1	Good	9/30/2014	N/A	signs of stress
75167	Pine, Scotch	<i>Pinus sylvestris</i>	6 to 12	1	Fair	9/30/2014	N/A	other - see notes
75168	Sequoia, Giant	<i>Sequoiadendron giganteum</i>	0 to 6	0	Good	9/30/2014	N/A	N/A
75169	Pine, Scotch	<i>Pinus sylvestris</i>	6 to 12	1	Dead	needle disorder		
75170	Pine, Scotch	<i>Pinus sylvestris</i>	12 to 18	1	Poor	9/30/2014	N/A	N/A
75171	Sequoia, Giant	<i>Sequoiadendron giganteum</i>	0 to 6	0	Good	9/30/2014	N/A	N/A
75172	Pine, Scotch	<i>Pinus sylvestris</i>	12 to 18	1	Dead	9/30/2014	deadwood	
75173	Pine, Scotch	<i>Pinus sylvestris</i>	48 +	1	Dead	9/30/2014	N/A	

Site ID	Species Common	Species Botanic	Diameter	Stems	Condition	Inventory Date	Structural Defect	Disease Pest
75174	Pine, Scotch	<i>Pinus sylvestris</i>	12 to 18	1	Good	9/30/2014	bent bole	other - see notes
75175	Pine, Scotch	<i>Pinus sylvestris</i>	6 to 12	1	Fair	9/30/2014	N/A	other - see notes
75176	Sequoia, Giant	<i>Sequoiadendron giganteum</i>	0 to 6	1	Good	9/30/2014		
75177	Pine, Scotch	<i>Pinus sylvestris</i>	12 to 18	1	Good	9/30/2014	N/A	N/A
75178	Sequoia, Giant	<i>Sequoiadendron giganteum</i>	0 to 6	1	Good	9/30/2014		other - see notes
75179	Pine, Pinyon	<i>Pinus edulis</i>	0 to 6	2	Good	9/30/2014	N/A	N/A
75180	Pine, Pinyon	<i>Pinus edulis</i>	0 to 6	1	Good	9/30/2014	bow / sweep	signs of stress
75181	Pine, Pinyon	<i>Pinus edulis</i>	0 to 6	1	Good	9/30/2014	N/A	N/A
75182	Pine, Pinyon	<i>Pinus edulis</i>	6 to 12	1	Good	9/30/2014	ivy / vines	N/A
75183	Stump	<i>Stump</i>	0 to 6	1	N/A			
75184	Pine, Pinyon	<i>Pinus edulis</i>	0 to 6	1	Good	9/30/2014	N/A	N/A
75185	Pine, Pinyon	<i>Pinus edulis</i>	0 to 6	1	Good	9/30/2014	N/A	N/A
75186	Pine, Pinyon	<i>Pinus edulis</i>	0 to 6	1	Dead	9/30/2014	N/A	
75187	Pine, Pinyon	<i>Pinus edulis</i>	0 to 6	1	Good	9/30/2014	N/A	N/A
75188	Vacant Site	<i>Vacant Site</i>	0	0	N/A			
75189	Vacant Site	<i>Vacant Site</i>	0	0	N/A			
75190	Pine, Pinyon	<i>Pinus edulis</i>	0 to 6	3	Good	9/30/2014	N/A	N/A
75191	Buckthorn, spp	<i>Rhamnus species</i>	0 to 6	1	Fair	9/30/2014	crowded by larger tree	N/A
75192	Linden, American	<i>Tilia americana</i>	6 to 12	1	Fair	9/30/2014	N/A	foliage disorder
75193	Horsechestnut	<i>Aesculus hippocastanum</i>	6 to 12	1	Fair	9/30/2014	basal wound	foliage disorder
75194	Cottonwood, Lanceleaf	<i>Populus x acuminata</i>	18 to 24	1	Fair	9/30/2014	basal wound	foliage disorder
75195	Oak, Bur	<i>Quercus macrocarpa</i>	6 to 12	1	Fair	9/30/2014	N/A	foliage disorder
75196	Cottonwood, Lanceleaf	<i>Populus x acuminata</i>	18 to 24	1	Good	9/30/2014	N/A	foliage disorder
75197	Cottonwood, Lanceleaf	<i>Populus x acuminata</i>	18 to 24	1	Good	9/30/2014	circling / crossing roots	foliage disorder
75198	Locust, Honey	<i>Gleditsia triacanthos</i>	6 to 12	1	Very Poor	9/30/2014	dead trunk tissue	crown dieback

Site ID	Species Common	Species Botanic	Diameter	Stems	Condition	Inventory Date	Structural Defect	Disease Pest
75199	Pine, Ponderosa	<i>Pinus ponderosa</i>	6 to 12	1	Good	9/30/2014	bow / sweep	other - see notes
75200	Pine, Ponderosa	<i>Pinus ponderosa</i>	6 to 12	1	Good	9/30/2014	leaning	other - see notes
75201	Catalpa, Western	<i>Catalpa speciosa</i>	0 to 6	1	Poor	9/30/2014	dead trunk tissue	foliage disorder
75202	Juniper, Rocky Mountain	<i>Juniperus scopulorum</i>	12 to 18	1	Good	9/30/2014	basal wound	N/A
75203	Linden, American	<i>Tilia americana</i>	0 to 6	1	Fair	9/30/2014	dead trunk tissue	foliage disorder
75204	Ginkgo	<i>Ginkgo biloba</i>	18 to 24	1	Poor	9/30/2014	basal wound	crown dieback
75205	Pine, Austrian	<i>Pinus nigra</i>	24 to 30	1	Fair	9/30/2014	N/A	other - see notes
75206	Ash, Green	<i>Fraxinus pennsylvanica</i>	6 to 12	2	Fair	9/30/2014	stress epicormics	borers
75207	Linden, American	<i>Tilia americana</i>	6 to 12	1	Fair	9/30/2014	bow / sweep	foliage disorder
75208	Linden, American	<i>Tilia americana</i>	6 to 12	1	Fair	9/30/2014	basal wound	foliage disorder
75209	Willow, White	<i>Salix alba</i>	24 to 30	3	Poor	9/30/2014	dead leaders	signs of stress
75210	Willow, White	<i>Salix alba</i>	18 to 24	4	Poor	9/30/2014	dead leaders	signs of stress
75211	Willow, White	<i>Salix alba</i>	24 to 30	7	Poor	9/30/2014	dead trunk tissue	signs of stress
75212	Coffeetree, Kentucky	<i>Gymnocladus dioica</i>	12 to 18	1	Fair	9/30/2014	dead trunk tissue	signs of stress
75213	Willow, White	<i>Salix alba</i>	48 +	2	Poor	9/30/2014	trunk decay	crown dieback
75214	Crabapple, Flowering	<i>Malus sylvestris</i>	12 to 18	1	Poor	9/30/2014	trunk decay	fire blight
75215	Crabapple, Flowering	<i>Malus sylvestris</i>	12 to 18	1	Fair	9/30/2014	deadwood	fire blight
75216	Crabapple, Flowering	<i>Malus sylvestris</i>	24 to 30	1	Fair	9/30/2014	Large Limbs/scaffold defect	signs of stress
75217	Crabapple, Flowering	<i>Malus sylvestris</i>	12 to 18	1	Fair	9/30/2014	dead trunk tissue	fire blight
75218	Crabapple, Flowering	<i>Malus sylvestris</i>	24 to 30	1	Fair	9/30/2014	dead trunk tissue	fire blight
75219	Crabapple, Flowering	<i>Malus sylvestris</i>	0 to 6	1	Good	9/30/2014	N/A	N/A
75220	Fir, Douglas	<i>Pseudotsuga menziesii</i>	0 to 6	1	Good	9/30/2014	N/A	N/A
75221	Linden, American	<i>Tilia americana</i>	18 to 24	1	Good	9/30/2014	N/A	foliage disorder
75222	Fir, Douglas	<i>Pseudotsuga menziesii</i>	0 to 6	1	Good	9/30/2014		
75223	Fir, Douglas	<i>Pseudotsuga menziesii</i>	0 to 6	1	Good	9/30/2014		
75224	Fir, Douglas	<i>Pseudotsuga menziesii</i>	0 to 6	1	Good	9/30/2014		
75225	Pine, Scotch	<i>Pinus sylvestris</i>	6 to 12	1	Good	9/30/2014	N/A	N/A

Site ID	Species Common	Species Botanic	Diameter	Stems	Condition	Inventory Date	Structural Defect	Disease Pest
75226	Fir, Douglas	<i>Pseudotsuga menziesii</i>	0 to 6	1	Dead			
75227	Fir, Douglas	<i>Pseudotsuga menziesii</i>	0 to 6	1	Good	9/30/2014		
75228	Fir, Douglas	<i>Pseudotsuga menziesii</i>	0 to 6	1	Good	9/30/2014		
75229	Pine, Austrian	<i>Pinus nigra</i>	30 to 36	1	Fair	9/30/2014	N/A	other - see notes
75230	Cottonwood, Plains	<i>Populus sargentii</i>	36 to 42	1	Fair	9/30/2014	Large Limbs/scaffold defect	signs of stress
75231	Cottonwood, Plains	<i>Populus sargentii</i>	42 to 48	1	Fair	9/30/2014	N/A	signs of stress
75232	Stump	<i>Stump</i>	36 to 42	0	N/A			
75233	Pine, Austrian	<i>Pinus nigra</i>	24 to 30	1	Fair	9/30/2014	fair structure	other - see notes
75234	Pine, Austrian	<i>Pinus nigra</i>	18 to 24	1	Fair	9/30/2014	crowded by larger tree	other - see notes
75235	Vacant Site	<i>Vacant Site</i>	0	0	N/A			
75236	Vacant Site	<i>Vacant Site</i>	0	0	N/A	DBH @ <4.5 ft		
75237	Ash, Green	<i>Fraxinus pennsylvanica</i>	18 to 24	1	Poor	9/30/2014	basal decay	foliage disorder
75238	Vacant Site	<i>Vacant Site</i>	0	0	N/A	lightning struck tree, 20% crown dieback on 3/18/15DTE FROM 2013; score 110 of 144		
75239	Ash, Green	<i>Fraxinus pennsylvanica</i>	18 to 24	1	Fair	9/30/2014	deadwood	foliage disorder
75240	Ash, Green	<i>Fraxinus pennsylvanica</i>	24 to 30	1	Poor	9/30/2014	dead leaders	signs of stress
75241	Ash, Green	<i>Fraxinus pennsylvanica</i>	18 to 24	1	Fair	9/30/2014	fair structure	foliage disorder
75242	Ash, Green	<i>Fraxinus pennsylvanica</i>	18 to 24	1	Fair	9/30/2014	stress epicormics	foliage disorder
75243	Ash, Green	<i>Fraxinus pennsylvanica</i>	24 to 30	1	Fair	9/30/2014	dead trunk tissue	signs of stress
75244	Ash, Green	<i>Fraxinus pennsylvanica</i>	24 to 30	1	Fair	9/30/2014	stress epicormics	foliage disorder
75245	Ash, Green	<i>Fraxinus pennsylvanica</i>	24 to 30	1	Poor	9/30/2014	poor structure	foliage disorder

Site ID	Species Common	Species Botanic	Diameter	Stems	Condition	Inventory Date	Structural Defect	Disease Pest
75246	Ash, Green	<i>Fraxinus pennsylvanica</i>	30 to 36	1	Fair	9/30/2014	deadwood	foliage disorder
75247	Ash, Green	<i>Fraxinus pennsylvanica</i>	18 to 24	1	Fair	9/30/2014	dead trunk tissue	foliage disorder
75248	Maple, Silver	<i>Acer saccharinum</i>	24 to 30	1	N/A	Removed.		
75249	Elm, American	<i>Ulmus americana</i>	36 to 42	1	Fair	9/30/2014	stress epicormics	foliage disorder
75250	Maple, Silver	<i>Acer saccharinum</i>	30 to 36	1	Fair	9/30/2014	previous failure	foliage disorder
75251	Maple, Silver	<i>Acer saccharinum</i>	24 to 30	1	Very Poor	9/30/2014	dead trunk tissue	signs of stress
75252	Maple, Silver	<i>Acer saccharinum</i>	24 to 30	1	Poor	9/30/2014	dead leaders	crown dieback
75253	Maple, Silver	<i>Acer saccharinum</i>	24 to 30	2	Poor	9/30/2014	deadwood	anthracnose
75254	Cottonwood, Narrowleaf	<i>Populus angustifolia</i>	18 to 24	1	Fair	9/30/2014	deadwood	foliage disorder
75255	Locust, Honey	<i>Gleditsia triacanthos</i>	18 to 24	2	Fair	9/30/2014	stress epicormics	crown dieback
75256	Linden, Littleleaf	<i>Tilia cordata</i>	6 to 12	1	Fair	9/30/2014	basal wound	foliage disorder
75257	Cottonwood, Plains	<i>Populus sargentii</i>	30 to 36	1	Fair	9/30/2014	previous failure	signs of stress
75258	Cottonwood, Lanceleaf	<i>Populus x acuminata</i>	30 to 36	1	Fair	9/30/2014	N/A	foliage disorder
75259	Cottonwood, Lanceleaf	<i>Populus x acuminata</i>	30 to 36	1	Fair	9/30/2014	dead root tissue	foliage disorder
75260	Cottonwood, Lanceleaf	<i>Populus x acuminata</i>	24 to 30	1	Poor	9/30/2014	deadwood	crown dieback
75261	Cottonwood, Lanceleaf	<i>Populus x acuminata</i>	36 to 42	1	Fair	9/30/2014	dead leaders	crown dieback
75262	Cottonwood, Lanceleaf	<i>Populus x acuminata</i>	36 to 42	1	Fair	9/30/2014	dead leaders	crown dieback
75263	Cottonwood, Lanceleaf	<i>Populus x acuminata</i>	36 to 42	1	Fair	9/30/2014	deadwood	foliage disorder
75264	Cottonwood, Lanceleaf	<i>Populus x acuminata</i>	36 to 42	1	Poor	9/30/2014	deadwood	crown dieback
75265	Hackberry, Northern	<i>Celtis occidentalis</i>	6 to 12	4	Fair	9/30/2014	crowded by larger tree	foliage disorder
75266	Hackberry, Northern	<i>Celtis occidentalis</i>	6 to 12	2	Fair	9/30/2014	crowded by larger tree	foliage disorder
75267	Cottonwood, Lanceleaf	<i>Populus x acuminata</i>	24 to 30	1	Fair	9/30/2014	deadwood	foliage disorder

Site ID	Species Common	Species Botanic	Diameter	Stems	Condition	Inventory Date	Structural Defect	Disease Pest
75268	Vacant Site	<i>Vacant Site</i>	0	0	N/A			
75269	Vacant Site	<i>Vacant Site</i>	0	0	N/A			
75270	Vacant Site	<i>Vacant Site</i>	0	0	N/A			
75271	Vacant Site	<i>Vacant Site</i>	0	0	N/A			
75272	Hackberry, Northern	<i>Celtis occidentalis</i>	6 to 12	6	Fair	9/30/2014	fusing limbs	foliage disorder
75273	Cottonwood, Lanceleaf	<i>Populus x acuminata</i>	18 to 24	1	Fair	9/30/2014	deadwood	foliage disorder
75274	Hackberry, Northern	<i>Celtis occidentalis</i>	6 to 12	4	Fair	9/30/2014	crowded by larger tree	foliage disorder
75275	Hackberry, Northern	<i>Celtis occidentalis</i>	6 to 12	7	Fair	9/30/2014	crowded by larger tree	foliage disorder
75276	Vacant Site	<i>Vacant Site</i>	0	0	N/A			
75277	Cottonwood, Plains	<i>Populus sargentii</i>	42 to 48	1	Fair	9/30/2014	lost major leader or limb	crown dieback
75278	Cottonwood, Plains	<i>Populus sargentii</i>	36 to 42	1	Fair	9/30/2014	cavity	scale insects
75279	Pine, Scotch	<i>Pinus sylvestris</i>	12 to 18	1	Good	9/30/2014	basal wound	signs of stress
75280	Cottonwood, Plains	<i>Populus sargentii</i>	36 to 42	1	Good	9/30/2014	N/A	signs of stress
75281	Vacant Site	<i>Vacant Site</i>	0	0	N/A			
75282	Pine, Austrian	<i>Pinus nigra</i>	6 to 12	1	Good	9/30/2014	N/A	other - see notes
75283	Stump	<i>Stump</i>	6 to 12	1	N/A			
75284	Linden, Littleleaf	<i>Tilia cordata</i>	6 to 12	1	Good	9/30/2014	basal wound	foliage disorder
75285	Linden, Littleleaf	<i>Tilia cordata</i>	0 to 6	1	Poor	9/30/2014	dead trunk tissue	sunscald
75286	Vacant Site	<i>Vacant Site</i>	0	0	N/A			
75287	Linden, American	<i>Tilia americana</i>	6 to 12	1	Fair	9/30/2014	other - see notes	foliage disorder
75288	Stump	<i>Stump</i>	6 to 12	1	N/A			
75289	Linden, American	<i>Tilia americana</i>	6 to 12	1	Fair	9/30/2014	other - see notes	foliage disorder
75290	Linden, American	<i>Tilia americana</i>	6 to 12	1	Good	9/30/2014	bow / sweep	signs of stress
75291	Stump	<i>Stump</i>	0 to 6	1	N/A			
75292	Linden, American	<i>Tilia americana</i>	6 to 12	1	Good	9/30/2014	N/A	foliage disorder
75293	Linden, American	<i>Tilia americana</i>	6 to 12	1	Fair	9/30/2014	basal wound	foliage disorder

Site ID	Species Common	Species Botanic	Diameter	Stems	Condition	Inventory Date	Structural Defect	Disease Pest
75294	Cottonwood, Plains	<i>Populus sargentii</i>	18 to 24	1	Fair	9/30/2014	N/A	foliage disorder
75295	Ash, Green	<i>Fraxinus pennsylvanica</i>	18 to 24	1	Fair	9/30/2014	deadwood	foliage disorder
75296	Vacant Site	<i>Vacant Site</i>	0	0	N/A			
75297	Pine, Austrian	<i>Pinus nigra</i>	24 to 30	1	Fair	9/30/2014	N/A	other - see notes
75298	Ash, Green	<i>Fraxinus pennsylvanica</i>	6 to 12	1	Fair	9/30/2014	crowded by larger tree	foliage disorder
75299	Cottonwood, Lanceleaf	<i>Populus x acuminata</i>	24 to 30	1	Fair	9/30/2014	deadwood	foliage disorder
75300	Poplar, White	<i>Populus alba</i>	42 to 48	1	Fair	9/30/2014	dead leaders	signs of stress
75301	Spruce, Blue	<i>Picea pungens</i>	12 to 18	1	Dead	needle disorder		
75302	Pine, Ponderosa	<i>Pinus ponderosa</i>	6 to 12	1	Fair	9/30/2014	poor structure	other - see notes
75303	Pine, Ponderosa	<i>Pinus ponderosa</i>	12 to 18	1	Fair	9/30/2014	bow / sweep	other - see notes
75304	Cottonwood, Plains	<i>Populus sargentii</i>	30 to 36	1	Fair	9/30/2014	deadwood	signs of stress
75305	Cottonwood, Plains	<i>Populus sargentii</i>	18 to 24	2	Fair	9/30/2014	dead leaders	signs of stress
75306	Pine, Scotch	<i>Pinus sylvestris</i>	6 to 12	1	Good	9/30/2014	N/A	sapsucker damage
75307	Cottonwood, Lanceleaf	<i>Populus x acuminata</i>	24 to 30	1	Fair	9/30/2014	dead leaders	signs of stress
75308	Spruce, Blue	<i>Picea pungens</i>	12 to 18	1	Dead			
75309	Spruce, Blue	<i>Picea pungens</i>	12 to 18	1	Dead			
75310	Vacant Site	<i>Vacant Site</i>	0	0	N/A			
75311	Spruce, Blue	<i>Picea pungens</i>	12 to 18	1	Fair	9/30/2014	lost main leader	signs of stress
75312	Pine, Austrian	<i>Pinus nigra</i>	24 to 30	1	Fair	9/30/2014	fair structure	other - see notes
93248	Crabapple, Flowering	<i>Malus sylvestris</i>	0 to 6	1	Good	5/4/2015	N/A	N/A
93250	Crabapple, Flowering	<i>Malus sylvestris</i>	0 to 6	1	Good	5/4/2015	N/A	N/A
93262	Pine, Austrian	<i>Pinus nigra</i>	0 to 6	1	Good	5/4/2015	N/A	N/A
93263	Pine, Austrian	<i>Pinus nigra</i>	0 to 6	1	Good	5/4/2015	N/A	N/A
93264	Crabapple, Flowering	<i>Malus sylvestris</i>	0 to 6	1	Good	5/4/2015	N/A	N/A
93265	Pine, Austrian	<i>Pinus nigra</i>	0 to 6	1	Good	5/4/2015	N/A	N/A

Site ID	Species Common	Species Botanic	Diameter	Stems	Condition	Inventory Date	Structural Defect	Disease Pest
93266	Crabapple, Flowering	<i>Malus sylvestris</i>	0 to 6	1	Good	5/4/2015	N/A	N/A
93267	Crabapple, Flowering	<i>Malus sylvestris</i>	0 to 6	1	Good	5/4/2015	N/A	N/A
93268	Fir, Douglas	<i>Pseudotsuga menziesii</i>	0 to 6	1	Good	5/4/2015	N/A	N/A
93269	Crabapple, Flowering	<i>Malus sylvestris</i>	0 to 6	1	Good	5/4/2015	N/A	N/A
93270	Fir, Douglas	<i>Pseudotsuga menziesii</i>	0 to 6	1	Good	5/4/2015	N/A	N/A
93271	Pine, Austrian	<i>Pinus nigra</i>	0 to 6	1	Good	5/4/2015	N/A	N/A
93272	Pine, Austrian	<i>Pinus nigra</i>	0 to 6	1	Good	5/4/2015	N/A	N/A
93273	Crabapple, Flowering	<i>Malus sylvestris</i>	0 to 6	1	Good	5/4/2015	N/A	N/A
93274	Pine, Austrian	<i>Pinus nigra</i>	0 to 6	1	Good	5/4/2015	N/A	N/A
93275	Pine, Austrian	<i>Pinus nigra</i>	0 to 6	1	Good	5/4/2015	N/A	N/A
93276	Sequoia, Giant	<i>Sequoiadendron giganteum</i>	0 to 6	1	Good	5/4/2015	N/A	N/A
93277	Vacant Site	<i>Vacant Site</i>	0	1	N/A	Delete this site		
93278	Vacant Site	<i>Vacant Site</i>	0	1	N/A			
93279	Pine, Austrian	<i>Pinus nigra</i>	0 to 6	1	Good	5/4/2015	N/A	N/A
93290	Vacant Site	<i>Vacant Site</i>	0	1	N/A			
93298	Cottonwood, Plains	<i>Populus sargentii</i>	0 to 6	1	Good	5/4/2015	N/A	N/A